

PREMIUM



August 11-16
2026

America
CELEBRATES
250
1776 - 2026



Early Bird
Entry Fee \$10
Postmarked by
July 10, 2026

Last Day for entries
In-Person & On-line
July 24, 2026

Ohio's BEST



Life is better
when you're
cooler!



Scott Purcell
330-329-8222
Guesserman@Outlook.com

Lemonade

Official Premium 2026

- 129th Year! -

CUYAHOGA COUNTY FAIR And EXPOSITION

Tuesday through Sunday

August 11, 12, 13, 14, 15, 16, 2026

Cuyahoga County Agricultural Society

Mailing Address: P.O. Box 135 • Berea, Ohio 44017

Main Parking Area: 19201 East Bagley Road • Middleburg Hts., Ohio 44130

Gate 1, Off Eastland Road: 164 Eastland Road • Berea, Ohio 44017

(440) 243-0090 • Fax (440) 243-0344 • www.cuyfair.com

TABLE OF CONTENTS

Admission Fees	5	Garden & Produce	19
Antiques	11	General Rules	4
Arts & Crafts	6	Girl Scouts – GSNEO	34
Art Work	9	Handcraft	6
Bees & Honey	24-25	Herb Garden Display	20
Boy Scouts of America	34	Hobby Show	16
Camping & Parking	5	Home Canning	20-21
Canine Display	18	Home Garden Vegetable and/or Display	20
Community Garden Competition	19-20	How To Register On-Line	42
Culinary	14	Junior Fair Department	31
Dahlia Show	31	Junior Fair Officials	31
Decorated Christmas Tree	17	Junior Fair Dance	32
Design Arrangements – Standard Division	30	Machine Sewing	8
Directors-At-Large & Officers	3	Membership, Cuyahoga County Agricultural Society	4
Domestic Arts & Hobbies	14	Ohio Fair Schedule	2
Entry Requirements – Exhibitors	5	Payment of Premiums & Awards	5
Exhibitor Drop Off & Pick Up Schedule	50-51	Photography	10
Fairy Gardens	30	Scholarship	55
Flea Market	15, 48	Senior Citizen Gardener	23
Floral Department	25	Specimen Blooms	27-29
4-H Clubs	33	Table Setting	18
4-H Animal Science Auction	33	Vegetables	22-23
Fruit	21-22	Wine & Beer (Homemade)	15-16

2026 Ohio Agricultural Fair Schedule

Information on All Ohio Events – 1-800-282-5393



COUNTY FAIR & LOCATION..... DATES

WEEK OF MAY 31

Paulding County Fair (Paulding)* June 6-June 13

WEEK OF JUNE 14

Pickaway County Fair (Circleville)* June 20-June 27

WEEK OF JUNE 21

Harrison County Fair (Cadiz) June 22-June 27

Putnam County Fair (Ottawa)* June 22-June 27

Hamilton County Fair (Carthage) June 25-June 28

WEEK OF JUNE 28

Marion County Fair (Marion)* June 28-July 4

WEEK OF JULY 5

Clinton County Fair (Wilmington)* July 11-July 18

Madison County Fair (London) July 11-July 18

WEEK OF JULY 12

Adams County Fair (West Union) July 12-July 18

Logan County Fair (Bellefontaine) July 12-July 18

Lawrence County Fair (Proctorville) July 13-July 18

Lucas County Fair (Maumee) July 13-July 19

Montgomery County Fair (Dayton)* July 14-July 19

Trumbull County Fair (Cortland)* July 14-July 19

Jackson County Fair (Wellston)* July 17-July 25

WEEK OF JULY 19

Ottawa County Fair (Oak Harbor)* July 19-July 26

Crawford County Fair (Bucyrus)* July 20-July 25

Fayette County Fair (Washington C.H.)* July 20-July 25

Perry County Fair (New Lexington) July 20-July 25

Warren County Fair (Lebanon)* July 20-July 25

Franklin County Fair (Hilliard)* July 20-July 26

Carroll County Fair (Carrollton)* July 21-July 26

Clark County Fair (Springfield) July 24-July 31

Pike County Fair (Piketon)* July 24-August 1

Knox County Fair (Mt. Vernon)* July 25-August 1

WEEK OF JULY 26

Butler County Fair (Hamilton) July 26-August 1

Shelby County Fair (Sidney)* July 26-August 1

Union County Fair (Marysville)* July 26-August 1

Seneca County Fair (Tiffin)* July 26-August 2

Clermont County Fair (Owensville) July 27-August 1

Vinton County Fair (McArthur) July 27-August 1

Lake County Fair (Painesville)* July 28-August 2

Summit County Fair (Tallmadge)* July 28-August 2

Ohio State Fair (Columbus)* July 29-August 9

Preble County Fair (Eaton)* August 1-August 8

WEEK OF AUGUST 2

Auglaize County Fair (Wapakoneta)* August 2-August 8

Greene County Fair (Xenia)* August 2-August 8

Wood County Fair (Bowling Green)* August 2-August 9

Gallia County Fair (Gallipolis) August 3-August 8

Scioto County Fair (Lucasville) August 3-August 8

Columbiana County Fair (Lisbon)* August 3-August 9

Medina County Fair (Medina) August 3-August 9

Champaign County Fair (Urbana)* August 7-August 14

Athens County Fair (Athens)* August 7-August 15

WEEK OF AUGUST 9

Hartford Independent Fair (Licking Co.)* August 9-August 15

Richland County Fair* August 9-August 15

Ross County Fair (Chillicothe)* August 9-August 15

Holmes County Fair (Millersburg) August 10-August 15

Erie County Fair (Sandusky) August 10-August 15

Ashtabula County Fair (Jefferson)* August 11-August 16

Cuyahoga County Fair (Berea) * August 11-August 16

Mercer County Fair (Celina)* August 13-August 19

Henry County Fair (Napoleon)* August 13-August 20

Miami County Fair (Troy)* August 14-August 20

WEEK OF AUGUST 16

Huron County Fair (Norwalk) August 16-August 22

Muskingum County Fair (Zanesville)* August 16-August 22

Meigs County Fair (Pomeroy)* August 17-August 22

Jefferson County Fair (Smithfield) August 17-August 23

Allen County Fair (Lima)* August 21-August 29

Darke County Fair (Greenville)* August 21-August 29

Defiance County Fair (Hicksville)* August 22-August 29

WEEK OF AUGUST 23

Lorain County Fair (Wellington)* August 23-August 30

Monroe County Fair (Woodsfield)* August 24-August 29

Sandusky County Fair (Fremont) August 24-August 30

Portage County Fair (Randolph) August 25-August 30

WEEK OF AUGUST 30

Noble County Fair (Caldwell)* August 31-Sept. 5

Morrow County Fair (Mt. Gilead)* August 31-Sept. 7

Hancock County Fair (Findlay)* Sept. 1-Sept. 7

Richwood Independent Fair (Union Co.)* Sept. 1-Sept. 7

Stark County Fair (Canton)* Sept. 1-Sept. 7

Van Wert County Fair (Van Wert)* Sept. 1-Sept. 7

Mahoning County Fair (Canfield)* Sept. 2-Sept. 7

Geauga County Fair (Burton)* Sept. 3-Sept. 7

Fulton County Fair (Wauseon)* Sept. 4-Sept. 10

Washington County Fair (Marietta)* Sept. 5-Sept. 8

WEEK OF SEPTEMBER 6

Highland County Fair (Hillsboro) Sept. 6-Sept. 12

Belmont County Fair (St. Clairsville) Sept. 7-Sept. 13

Morgan County Fair (McConnelsville)* Sept. 8-Sept. 12

Hardin County Fair (Kenton)* Sept. 8-Sept. 13

Wayne County Fair (Wooster)* Sept. 12-Sept. 17

Williams County Fair (Montpelier)* Sept. 12-Sept. 19

WEEK OF SEPTEMBER 13

Guernsey County Fair (Old Washington)* Sept. 14-Sept. 19

Hocking County Fair (Logan) Sept. 14-Sept. 19

Wyandot County Fair (Upper Sandusky)* Sept. 14-Sept. 19

Bellville Independent Fair (Richland Co.) Sept. 16-Sept. 19

Delaware County Fair (Delaware)* Sept. 19-Sept. 26

WEEK OF SEPTEMBER 20

Ashland County Fair (Ashland)* Sept. 20-Sept. 26

Tuscarawas County Fair (Dover)* Sept. 21-Sept. 27

Albany Independent Fair (Athens Co.) Sept. 23-Sept. 27

WEEK OF SEPTEMBER 27

Brown County Fair (Georgetown) Sept. 28-October 3

Barlow Independent Fair (Washington Co.) Sept. 30-October 4

Coshocton County Fair (Coshocton)* October 2-October 8

WEEK OF OCTOBER 4

Loudonville Independent Fair (Ashland Co.) October 6-October 10

Fairfield County Fair (Lancaster)* October 11-October 17

* = Harness Racing

The Cuyahoga County Agricultural Society

OFFICERS

Carl CooleyPresident
 Larry Theurer Vice President
 Joanne ScudderSecretary
 Gail Royak-WindTreasurer

EXECUTIVE COMMITTEE

Carl Cooley, Chairman
 Larry Theurer, Gail Royak-Wind, Bob Sculac,
 Joanne Scudder, Jim Shea, Tim Fowler

DIRECTORS-AT-LARGE

TERM EXPIRES 2026

Dennis Eck, Strongsville
 Tim Fowler, North Royalton
 Joanne Scudder, Brecksville
 Larry Theurer, Cleveland

DIRECTORS-AT-LARGE

TERM EXPIRES 2027

Diane Barton, Parma
 Carl Cooley, North Olmsted
 Jeff Collins, Bay Village
 Gail Royak-Wind, Brook Park
 Tom Sabrey, Strongsville

DIRECTORS-AT-LARGE

TERM EXPIRES 2028

Holly Everhart, Berea
 Jordyn Dickson, Bedford
 James Lewandowski, Parma
 Bob Sculac, Olmsted Falls
 James Shea Jr., Berea

EX-OFFICIO DIRECTORS

Cuyahoga County Extension Agents
 Cuyahoga County Executive

HONORARY DIRECTORS

Janet L. Schubert
 Joyce Kish
 Dennis Kopy
 Stanley Trupo

DEPARTMENT AND DIRECTOR-AT-LARGE

Administration ... Joanne Scudder
 Admissions Joanne Scudder
 Apiary..... Dennis Eck
 Arts & Crafts ... Jim Lewandowski
 Beer & Wine Sales ... Dennis Eck
 Bob Sculac
 Buildings, Grounds,
 Horse Barn Rentals ... Bob Sculac
 Campgrounds..... Bob Sculac
 Canine Holly Everhart
 Cattle Carl Cooley
 Contract Work/Capital Projects
 Jim Shea
 Domestic Arts &
 Hobbies Jim Lewandowski
 Draft Horses Dennis Eck
 Draft Ponies Dennis Eck
 Entertainment ... Jordyn Dickson
 Fair Vendors &
 Amusements Diane Barton
 Fair Veterinarian..... Carl Cooley
 Fire Tim Fowler
 Flea Market..... Jim Shea
 Floral Jeff Collins
 Garden Produce..... Jeff Collins
 Goats Jeff Collins
 Harness Racing, Horse Show
 Gail Wind
 Home & Hobby..Jim Lewandowski
 Horse Barns Dennis Eck
 Junior Fair Holly Everhart
 Legal..... Carl Cooley
 Maintenance Larry Theurer

Media-Advertising. Jordyn Dickson
 Parking..... Larry Theurer
 Poultry Tom Sabrey
 Premium Book... Joanne Scudder
 Rabbits & Cavies Tom Sabrey
 Security Carl Cooley
 Sheep Tom Sabrey
 Sponsorship Holly Everhart
 Sustainability/
 Energy Ctr. Joanne Scudder
 Swine Tom Sabrey

COMMITTEES & CHAIR

Ambassador
 Contest Diane Barton
 Audit. Bob Sculac
 Budget..... Carl Cooley
 Human Resources..Joanne Scudder
 Livestock Carl Cooley
 Scholarship..... Diane Barton
 Safety..... Tim Fowler

STAFF

Accounting Asst. ... Susan Bachie
 Flea Market
 Manager Jim Lewandowski
 Administrative
 Clerk..... Jackie Kinder
 Grounds
 Superintendent Barry Pettit

SUPPORT

4H Animal Auction
 Bruce Kucharsl
 Legal Consul Greg Sponseller
 OSU Extension
 Educator 4H Robin Stone

**Our premium book has two sections;
 General and Animal.
 If you need the Animal entries section,
 please stop in or call the office at
 (440) 243-0090**

OUTLINED HISTORY OF THE CUYAHOGA COUNTY AGRICULTURAL SOCIETY

- Ohio & Erie Canals in 1825 - Cleveland became established as hub for moving agricultural products.
- County Agricultural Society - 1829 Fair on Public Square - Silk worm production was featured.
- 1800's Fair in Kinsman Road area and then to Glenville. As big as a State Fair.
- Cuyahoga: Leader in poultry, table grapes, butter and cheese.
- Three Fairs in the late 1800's - Chagrin Falls, Dover Center and Berea.
- Western Cuyahoga County Agricultural Society in Berea: East Cuyahoga Fair in Chagrin Falls.
- 1871 saw ox carts and ox cart pulls and races.
- 1909 Cuyahoga led State in potato production - the concrete grandstands built.
- County Extension work starting in 1912 - 1918 first appearance of Boys & Girl Clubs at Fairs.
- Berea was the first fairgrounds to have permanent outdoor lights installed - 1914.
- 1925 - Ornamental ironwork ARCH was built as "triumphal arch" at Gate 1.
- Better transportation swung the pendulum in favor of Berea so Chagrin Falls Fair ceased operation in 1928.
- Fair temporarily suspended. 1932 Market Crash. Fair cancelled in 1942-43 during War years and in 2020 for the Covid pandemic
- Electrical upgrades done in 2004: Existing grandstands built in 2008.
- Quintessential men and women from the area served as officers and leaders of the Cuyahoga County Agricultural Society over the last one hundred and twenty-seven years. A partial list of predominate names include: Richardson, Boswell, Mastick, Aldrich, Biddulph, Saesel, Crawford, Gott, Jennings, Richards, Ward, Wing, Koster, Lukas Jr, Jones, Glendenning, Lehman, Cavalier, Walters and hundreds of others.
- Counting all the Fairs held in Cuyahoga County we can celebrate over 193 years in existence with 127 years at the present location.

Resource: Men of Grit and Greatness by W.F. Holzworth



The Cuyahoga County Council holds the deed to the fairgrounds and the State of Ohio empowers the Agricultural Society to operate the grounds providing an annual county fair is held. Funding for the operation

of the fairgrounds is generated by the Society via the fair and the rentals of the grounds throughout the year. The ODA (Ohio Department of Agriculture) sets the dates for the annual fair and provides rules and regulations for the management of the fair. A constitution and bylaws are established by the Society and assist the Directors-At-Large with the yearly events as well as the day to day operation. For additional information contact our Office at (440) 243-0090.

CUYAHOGA COUNTY AGRICULTURAL SOCIETY MEMBERSHIPS, ELECTION AND ANNUAL MEETING

Membership in the Agricultural Society is available to any resident of Cuyahoga County, 18 years of age or older. The annual membership fee is \$25.00. By Resolution of the Board of Directors-At-Large, the sale of Memberships for the coming year open December 15 and close on the last day of the fair. Memberships are on sale prior to fair week at the Fair Board Office on Monday, Wednesday and Friday from 10:00 A.M. to 3:00 P.M. and during fair week at the Board Office daily from 10:00 A.M. until 10:00 P.M.

Any member of the Cuyahoga County Agricultural Society, 21 years of age and older in good standing may declare his or her candidacy for the office of Directors-At-Large by filing with the Secretary of the Society a petition signed by ten or more members of the Society, at least 7 days before the annual election of Directors-At-Large is held. Blank petitions for this purpose shall be obtained from the Secretary.

The Annual Meeting and election of Directors-At-Large by ballot by resolution of the Board has been fixed as the first Saturday in October. Each member will receive a letter, two weeks prior to the annual meeting, specifying time, date and location of balloting and the annual meeting. The location of said meeting and Election shall be the Fair Board Office in Berea, Ohio between the hours of 10:00 A.M. and 2:00 P.M. or as announced.

General Rules

1. **NO PERSON** will be permitted to:
 - A. Sell or distribute, any merchandise
 - B. Post or display signs
 - C. Distribute handbills or advertising material
 - D. Make solicitations of any nature on the Fairgrounds **except in contracted Vendor rented spaces.**
2. Smoking is **NOT** permitted in any barn and/or exhibition building.
3. **DOGS or other PETS are NOT permitted on the Fairgrounds except for Assistance Animals.**
4. Alcoholic beverages may NOT be brought into the fairgrounds.
5. Bikes, Skateboards, Roller Blades (Inline Skates), Roller Skates, Motorized and other Scooters (with the exception of Mobility Scooters), ATV's and/or other similar & wheeled devices are NOT permitted on the Fairgrounds.
6. LASER pens, pointers or any other Laser devices are **NOT** permitted on the Fairgrounds.
7. We reserve the right to inspect all packages and containers.
8. **UNLESS OTHERWISE AUTHORIZED BY LAW, NO PERSON SHALL KNOWINGLY POSSESS, HAVE UNDER THE PERSON'S CONTROL, CONVEY, OR ATTEMPT TO CONVEY A DEADLY WEAPON OR DANGEROUS ORDNANCE INTO ANY BUILDING ON THE FAIRGROUNDS.**
9. The Cuyahoga County Agricultural Society assumes no responsibility for damage to or loss of parked vehicles or personal property contained within parked vehicles.
10. Drones-UAV's (Unmanned Aerial Vehicles) are not permitted on or above the fairground property without prior written permission from the fairboard.

Unaccompanied Minor Protocol - Page 49

ADMISSION AND PARKING

FREE PARKING EVERY DAY!

(Exhibit animals will be released starting at 5 PM on Sunday)

Commercial Buildings close at 10 PM **DAILY**

DAILY ADMISSION - Admission tickets and passes **DO NOT** include ride privileges. Ride Wrist Bands will be available at the Prime Time ticket booths inside the fairgrounds.

FREE GATE ADMISSION ANY DAY

CHILDREN age 2 and under

ACTIVE MILITARY with Valid ID

EARLY PRESALE (ANY DAY GATE ADMISSION)

June 1st - June 30th, 2026

ONLINE: \$8.00 / IN-PERSON: Not Available

PRESALE (ANY DATE GATE ADMISSION)

July 1st - July 31st, 2026

ONLINE: \$9.00 / IN-PERSON: Not Available

TUESDAY 8/11/26 DISCOUNT DAY

ONLINE: \$10.00 / IN-PERSON: Veterans & First Responders (with ID) - \$5.00 / Seniors (age 60+) - \$5.00 / Kids (age 12 & under) - \$5.00 / General Admission - \$12.00

TUE - THUR GATE ADMISSION

ONLINE: \$10.00 / IN-PERSON: \$12.00

FRI - SUN GATE ADMISSION

ONLINE: \$12.00 / IN-PERSON: \$14.00

DEMO DERBY

GENERAL ADMISSION: \$15.00 / PREFERRED SEATING: \$25.00

COMMERCIAL BUILDINGS CLOSE AT 10 PM NIGHTLY

CAMPING

Fair Week Only - By Reservations Only

Camper/Motorhome Parking, Electric Only \$195

Camper/Motorhome Parking, Water & Electric \$225

Camper/Motorhome Parking, Water, Electric & Sewer. \$300

EXHIBITORS ENTRY REQUIREMENTS

Privately owned golf carts/gators must be registered with CCF office, must provide proof of insurance, drivers must have valid drivers license, and must display proof of registration on vehicle.

- EXHIBITOR'S TICKET**– All exhibitors in Open Classes receive 2 Exhibitor's tickets with their entry fee. The cost depends on entry date. All entries received postmarked by July 12 - \$10.00. All entries postmarked between July 13 and the close of entries on July 24 - \$15.00. Only one exhibitor allowed per entry ticket and the ticket includes two Fair General Admissions. See Entry Forms for details. Note: The purchase of an Exhibitor Ticket does not constitute a membership in the Cuyahoga County Agricultural Society and further does not entitle the Purchaser to vote at the Annual Election of Membership Meetings.
- ENTRY FEES** – No added entry fees required in the Arts & Crafts, Garden Produce or Floral Departments. See the Livestock & Horse Show Premium Lists covering entry fees for all animals exhibited.
- PHYSICAL & ONLINE ENTRY FORMS** in all departments **MUST** be delivered to the Fair Office or postmarked no later than July 24, 2026 except in certain Breeds of Cattle.
- Directors-At-Large, Superintendents and their assistants are not permitted to exhibit in their respective departments. Fairboard office personnel are not permitted to exhibit in any department.
- The Judge may require proof, if deemed necessary, as to any doubtful or disputed point.
- All exhibitor's articles and animals must remain on exhibit, no substitutions, until closing time each day, except on Sunday, the last day of the Fair. On Sunday evening livestock will be released at the discretion of the Board of Directors-At-Large.

- Directors-At-Large and/or Superintendents of the respective departments are in charge of assigning space and/or stalls to Exhibitors.
- No person shall be informed of the number or kinds of entries, except the Directors-At-Large.
- SUBMIT YOUR ENTRIES on time. Class descriptions should be copied exactly as they appear in the premium book.** You have 3 days to make any additions or deletions to your entry once it is received. After 3 days, no changes will be accepted. **Due to time constraints, entries made the last week of the entry period are final and cannot be changed.**
- The Fairboard reserves the right to interpret its own rules and regulations and determine through its Directors-At-Large all matters and differences in regards thereto. A grieved party may enter a protest, signed by three persons, with the Secretary, who shall lay the same before the Board for their decision at the next session, from which there shall be no appeal.
- Make checks payable to **CUYAHOGA COUNTY FAIR**. Your check, money order, or **charge card information** must accompany your entry form. Mail your entry form and check to:
Cuyahoga County Fair • P.O. Box 135 • Berea, Ohio 44017

MODIFIED JULY FAIR OFFICE HOURS

JULY 6-17, 2026: MON THRU FRIDAY - 10AM TO 3PM

JULY 20 -31, 2026: MON THRU FRI - 9AM TO 5PM

CLOSED JULY 3, 2026. CLOSED ALL WEEKENDS IN JULY.

AUGUST 2026 FAIR OFFICE HOURS

MON	TUES	WED	THU	FRI	SAT	SUN
					1	2
3 Office Hours 9A - 5P	4 Office Hours 9A - 5P	5 Office Hours 9A - 5P	6 Office Hours 10A - P	7 Office Hours 9A - 5P	8 Office Hours 9A - 5P	9 Office Hours 9A - 5P
10 Office Hours 9A - 5P	11 FAIR HOURS 12 - 11P Office Hours 9A - 10P	12 FAIR HOURS 12 - 11P Office Hours 9A - 10P	13 FAIR HOURS 12 - 11P Office Hours 9A - 10P	14 FAIR HOURS 12 - 11P Office Hours 9A - 10P	15 FAIR HOURS 10A - 11P Office Hours 9A - 10P	16 FAIR HOURS 12 - 10P Office Hours 9A - 10P
17 FAIR HOURS Office Hours 9A - 5P	18 OFFICE CLOSED	19 Office Hours 10A - 7P	20 OFFICE CLOSED	21 Office Hours 10A - 3P	22 OFFICE CLOSED	23 OFFICE CLOSED

- FAIR OFFICE HOURS:**
YEAR ROUND M,W,F - 10AM TO 3PM - CLOSED WEEKENDS
- Any/all Exhibitor(s) who wins over \$599.00 total premiums must complete a W-9 form before checks are distributed in compliance with the IRS regulations. A 1099 will be issued to those exhibitors.
- For rules and regulations not included in the above, Rules and Regulations of the Ohio Department of Agriculture shall apply.

PAYMENT OF PREMIUMS and AWARDS

If the proceeds of the Fair, after paying expenses, are not sufficient to pay the Premiums in full, they will be paid on a prorated basis from the funds available.

No premiums will be paid on articles unless they are listed in the Premium List. Other articles may be exhibited, and if deemed worthy by the Board, may be placed on the Premium List the following year.

No person is to interfere with the judges during their examination of stock or other articles. Any Exhibitor interfering shall forfeit his or her premium. Where there is but one animal or article in a class, the Judge may award first, second, or no premium, if he or she deems it undeserving. **Entry tags or ribbons have no value as to the payment of premiums, as premiums are paid only by the records of the Judges' books from which there shall be no appeal.**

OPEN CLASS GENERAL ENTRY RULES

1. To exhibit you must purchase an Exhibitor's Ticket which includes two complimentary gate admissions. Your one Exhibitor's Ticket permits you to exhibit in all Open Class Divisions and/or Departments of the Cuyahoga County Fair.
2. There are no Class Entry Fees in open class departments.
3. Make check or money order payable to Cuyahoga County Fair and mail with your Entry Form to:

Cuyahoga County Fair
P.O. Box 135 • Berea, Ohio 44017

* Your Exhibitor Tickets will be emailed to you.

Your Entry Tags will be held for you at each exhibit building.

4. The Entry Requirements governing the Cuyahoga County Fair apply to open class departments.
5. Contestants will be responsible for proper classification.
6. No premium will be awarded if exhibit is considered unworthy by the judge.
7. PLEASE read additional Entry Rules listed under each section.
8. **Unclaimed premium checks will be considered a donation to the Cuyahoga County Agricultural Society.**
9. PLEASE direct questions regarding entering to the Fairboard Office 440-243-0090 or FairGuy01@Yahoo.com.
 - **The judge's book is the official guide in the awarding of premiums, not the placement of ribbons.**
10. A senior citizen is anyone 65 or older.

ENTRY DEADLINES: Postmarked by July 12th = Early Entry (\$10) | July 13 - 24 = Physical Entry Deadline (\$15) | On-line Entries accepted until July 24 at midnight.

THERE ARE NO ENTRY FEES IN JUNIOR FAIR EXHIBITS

*** FOR PREMIUM
ADMISSION TICKETS***

**Must have a VALID
email address.**

**Admission ticket will be sent
to this address. NO tickets are
available via regular mail or
pickup at the office.**

ARTS & CRAFTS DEPARTMENT 4-A

DISPLAYED IN BUILDING 27

JAMES LEWANDOWSKI

Director-At-Large for Arts & Crafts Entries
Contact Info: FairGuy01@yahoo.com
Superintendent: Erin Villanveva

SECTIONS

Handcraft • Sewing • Art Work
Photography
Video • Antiques • Weapons

IMPORTANT DATES FOR ARTS & CRAFTS ENTRIES DEPT 4-A ONLY

Fri., July 24 | ALL PHYSICAL & ONLINE ENTRY FORMS DUE

Thurs., Aug. 6 | ENTRY DROP-OFF
6:00 PM - 8:00 PM

Fri., Aug. 7 | ENTRY DROP OFF
9:00 AM - 8:00 PM

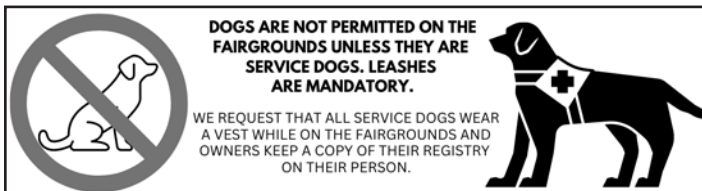
Sat., Aug. 8 | ENTRY DROP OFF
9:00 AM - 4:00 PM

Mon., Aug. 17 | ENTRY PICK UP
9:00 AM - 7:00 PM

HANDCRAFT SECTION 100

ENTRY RULES

1. Items previously exhibited in this Fair are not eligible.
2. All exhibits must be solely the work of the exhibitor. Purchased articles are not permitted.
3. Exhibitors are limited to one item for each individual class unless otherwise specified under the class. If specified, there is a limit of 3 entries per class.
4. Criteria for judging handcraft exhibits:
 - Workmanship
 - Suitability of materials, colors, design
 - Practicability, intended use
 - Cleanliness, neatness
5. In an entry with multiple techniques, (i.e. cross stitch and hardanger combined) put the entry in the class that contain the most technique in the item.
6. The design on all handcraft pictures must be no larger than 22" x 28" except where otherwise specified.
7. In Classes 1 through 161, Honorable Mentions may be awarded where deemed worthy.
8. An item that has a specific class already listed must be entered in that class — **NOT UNDER SPECIMEN OTHER THAN ABOVE.**
9. **See General Entry Rules on page 6.**



HANDCRAFT (continued)

CROCHET

Premiums: 1st - \$4.00; 2nd - \$3.00; 3rd - \$1.00
Best of Class - Rosette

Class

- 1 Tablecloth (standard or banquet)
- 2 Bedspread (twin or full size)
- 3 Handbag
- 4 Stole, shawl, poncho or cape
- 5 Sweater
- 6 Baby afghan or shawl
- 7 Baby Garments (2 or 3 piece set)
- 8 Doily
- 9 Pillow
- 10 Rug
- 11 Doll Dress
- 12 Toy
- 13 Specimen other than above
- 14 Specimen made by a senior citizen

KNITTING

Premiums: 1st - \$4.00; 2nd - \$3.00; 3rd - \$1.00
Best of Class - Rosette

Class

- 21 Adult sweater, solid color, variegated or self-striping yarn
- 22 Adult sweater, color work (e.g. Fair Isle, entrelac, mosaic, etc.)
- 23 Adult sleeveless vest, shell, or tank top
- 24 Shawl, stole, shrug
- 25 Poncho or cape
- 26 Baby garments, 2 or 3 piece set
- 27 Baby sweater (newborn to 2 years)
- 28 Child's sweater (2 years and over)
- 29 Socks or slippers, one pair
- 30 Scarf or cowl
- 31 Hat
- 32 Mittens, mitts, or gloves
- 33 Purse or bag
- 34 Knit item with beads
- 35 Knit item, felted
- 36 Toy
- 37 Knit by Jr. under 12 years old
- 38 Specimen other than above
See class 117 for knitted afghan

NEEDLEPOINT

Premiums: 1st - \$3.00; 2nd - \$2.00; 3rd - \$1.00
Best of Class - Rosette

Class

- 41 Picture, framed size up to 22" x 28" (no more than 3 different stitches)
- 42 Picture, framed size up to 22" x 28" (3 or more different stitches)
- 43 Miniature specimen - maximum size 2"x3"
- 44 Plastic canvas specimen
- 45 Toy
- 46 Specimen by senior citizen
- 47 Specimen other than above

COUNTED CROSS STITCH (NOT STAMPED)

Premiums: 1st - \$3.00; 2nd - \$2.00; 3rd - \$1.00;
Best of Class - Rosette

Class

- 51 Miniature specimen, maximum size 2" x 3"
- 52 Picture design under 6" x 8"
- 53 Picture design 6" x 8" and over worked on 11 or 14 Aida and inter-locked fabrics
- 54 Picture design 6" x 8" and over worked on 16 or 18 Aida and inter-locked fabrics

HANDCRAFT (continued)

- 55 Picture design 6" x 8" and over worked on linen and single-thread fabrics
- 56 Sampler (not picture) worked on Aida and interlocked fabrics
- 57 Sampler (not picture) worked on linen and single thread fabrics, no more than 3 stitches or stitch variations
- 58 Sampler (not picture) worked on linen and single thread fabrics, 4 or more stitches or stitch variations
- 59 Afghan
- 60 Pillow
- 61 Waste canvas specimen
- 62 Specimen other than above
- 63 Holiday picture or sampler
- 64 Holiday ornaments (maximum of 3)
- 65 Holiday specimen other than above

EMBROIDERY OR CROSS STITCH-STAMPED

Premiums: 1st - \$3.00; 2nd - \$2.00; 3rd - \$1.00
Best of Class - Rosette

Class

- 71 Tablecloth
- 72 Silk ribbon embroidery
- 73 Picture or sampler - framed size up to 22" x 28"
- 74 Punch needle embroidery
- 75 Crewel (worked with yarn), picture
- 76 Crewel (worked with yarn), pillow
- 77 Holiday Item
- 78 Specimen other than
- 79 Specimen by a senior citizen

OTHER HANDIWORK

Premiums: 1st - \$3.00; 2nd - \$2.00; 3rd - \$1.00;
Best of Class - Rosette

Class

- 81 Tatting
- 82 Smocking
- 83 Candlewicking
- 84 Rag Rugs
- 85 Counted Thread (no cross stitch, canvas) Duplicate stitch enter here
- 86 Combination of Technique
- 87 Weaving

HOOKED WORK

Premiums: 1st - \$7.00; 2nd - \$3.00; 3rd - \$2.00
Best of Class - Rosette

Class

- 91 Latchet rug or hanging
- 92 Colonial-traditional rug, tapestry
- 93 Colonial-traditional rug
- 94 Colonial-traditional rug, primitive
- 95 Colonial-traditional, framed specimen (no size limit)
- 96 Colonial-traditional, unframed specimen (no size limit)
- 97 Colonial-traditional specimen other than above

ARTICLE BY A MAN - NEEDLEWORK

Premiums: 1st - \$3.00; 2nd - \$2.00; 3rd - \$1.00

Class

- 101 Specimen

BABY BLANKET DONATION

Items in this category will be donated to a local hospital after the fair.

- 103 Baby Blanket Any Medium

EARLY BIRD ENTRY FEE \$10
 Postmarked by July 12, 2026



LAST DAY FOR ALL ENTRIES
 July 24, 2026

HANDCRAFT (continued)**HANDMADE FELT***Premiums: 1st - \$3.00; 2nd - \$2.00; 3rd - \$1.00***Class**

- 106 Needle Felt
 107 Wet Felt
 108 Knitted or Crochet Felt

Basketry*Premiums 1st-\$3.00; 2nd-\$2.00; 3rd-\$1.00**Best of Class - Rosette***Class**

- 111 Miniature specimen, under 4" diameter
 112 Over 4" up to under 10" diameter
 113 10" and over (diameter)

MISCELLANEOUS CRAFT SPECIMEN*Premiums: 1st - \$3.00; 2nd - \$3.00; 3rd - \$2.00***Class**

- 121 Stencil (on Fabric)
 122 Fabric Painting
 123 Embellishment
 124 Felt (not handmade)
 125 Tole
 126 Iris Folding
 127 Beadwork
 128 Stained Glass
 129 Polymer Clay
 130 Gift Wrap Specimen
 131 Decorated Wreath/Swag
 132 Scrap Book Specimen (one page)
 133 Handmade Soap
 134 Painted Rock
 135 Book Art / Folding
 136 Jewelry, Other
 137 Tye-Dye Clothing
 138 3D Printed Item
 139 Other Specimen

QUILTING*Names should be covered from view for judging**Best of Class - Rosette***Class**

151	Embroidered quilt	\$10.00	5.00	2.00
152	Hand Applique quilt	\$10.00	5.00	2.00
153	Machine Applique quilt	\$10.00	5.00	2.00
154	Hand quilted	\$10.00	5.00	2.00
155	Pieced & Tied Quilt	\$10.00	5.00	2.00
156	Cotton Patch Work Quilt	\$5.00	3.00	1.00
157	Crib/Baby Quilt	\$5.00	3.00	1.00
158	Twin Bed sized quilt	\$5.00	3.00	1.00
159	Machine quilted Wall Hanging	\$5.00	3.00	1.00
160	Hand quilted wall hanging	\$5.00	3.00	1.00
161	Miniature (24x24 or less)	\$5.00	3.00	1.00
162	Hand Quilted Apparel	\$5.00	3.00	1.00
163	Quilted Toy	\$5.00	3.00	1.00
164	Quilted Pillow	\$5.00	3.00	1.00
165	Spec other than above	\$5.00	3.00	1.00

AFGHANS*Premiums: 1st - \$5.00; 2nd - \$3.00; 3rd - \$2.00**Best of Class - Rosette***Class**

- 171 Crochet, one piece, one or more colors
 172 Crochet, sections or shapes joined together
 173 Crochet, afghan stitch, not embroidered
 174 Crocheted and embroidered

HANDCRAFT (continued)

- 175 Hand knitted
 176 Machine knitted
 177 Specimen made by a senior citizen

**MACHINE SEWING
SECTION 200****ENTRY RULES**

1. Please bring your entry on a hanger.
2. Sewing instructors and professional sewers are ineligible to compete in the machine sewing classes.
3. Exhibitors limited to one item per entry ticket unless
4. Items previously exhibited are ineligible
5. See General Entry Rules on Page 6

BEST OF SHOW IN MACHINE SEWING \$25*Premiums: 1st - \$7.00; 2nd - \$4.00; 3rd - \$3.00***Class**

- 200 Lady's suit with pants or skirt
 201 Lady's blazer or jacket
 202 Bridal gown
 203 Men's clothing (up to 3 pieces)
 204 Lady's dress
 205 Lady's outfit (no suits) up to 3 pieces
 206 Lady's formal dress
 207 Heavyweight coat
 208 Lightweight coat
 209 Adult sleepwear - up to 3 pc. set
 210 Shirt or blouse
 211 Lady's slacks
 212 Lady's skirt
 213 Children's clothing - casual - up to 3 piece set
 214 Children's clothing - dressy - up to 3 piece set
 215 Children's clothing - formal - (i.e. christening gowns) up to 3 piece
 216 Children's sleepwear - up to 3 piece set
 217 Halloween Costume - Child
 218 Halloween Costume - Adult
 219 Theatrical Costume - Male
 220 Theatrical Costume - Female Character
 221 Machine quilted clothing
 222 Specimen made from kit
 223 Strip pieced specimen
 224 Machine embroidery specimen
 225 Doll clothes - up to 3 pc. set
 226 Speciman non-apparel - no quilts or toys
 227 Toy
 228 Speciman other than above

*** FOR PREMIUM ADMISSION TICKETS***

**Must have a VALID email address.
 Admission ticket will be sent to this
 address. NO tickets are available via
 regular mail or pickup at the office.**

ART WORK SECTION 400

ENTRY RULES

NO ANTIQUES PLEASE

1. Limit of two (2) entries per class in Classes 400 through 489.
2. **FRAMING IS ENCOURAGED.**
3. ALL entries (classes 400-439) **MUST HAVE WIRE HANGING.** (must hang)
4. Water colors are to be matted.
5. Nudes will be excluded.
6. All exhibits must be solely the work of the exhibitor.
7. All entries must have been completed within the last year.
8. See *General Entry Rules on page 6.*

Best of Show in Art Work- Professional \$10.00 & Rosette

Best of Show in Art Work- Amateur \$10.00 & Rosette

PAINTINGS — OIL OR ACRYLIC, AMATEUR

Premiums: 1st - \$5.00; 2nd - \$4.00; 3rd - \$3.00; 4th - \$2.00; 5th - \$1.00

Class

- 400 Portrait or figure
- 401 Animal
- 402 Landscape
- 403 Seascape
- 404 Still life
- 405 Specimen (under 18 years of age)
- 406 Specimen

WATER COLORS, AMATEUR

Premiums: 1st - \$5.00; 2nd - \$4.00; 3rd - \$3.00; 4th - \$2.00; 5th - \$1.00

Class

- 407 Portrait or figure
- 408 Animal
- 409 Landscape
- 410 Seascape
- 411 Still life
- 412 Specimen (under 18 years of age)
- 413 Other than above

PASTELS, AMATEUR

Premiums: 1st - \$5.00; 2nd - \$4.00; 3rd - \$3.00; 4th - \$2.00; 5th - \$1.00

Class

- 414 Portrait or animal
- 415 Landscape or seascape
- 416 Specimen other than above
- 417 Specimen (under 18 years of age)

DRAWINGS, AMATEUR

Premiums: 1st - \$5.00; 2nd - \$4.00; 3rd - \$3.00; 4th - \$2.00; 5th - \$1.00

Class

- 418 Charcoal
- 419 Pencil / including ZenTangle
- 420 Ink / including ZenTangle
- 421 Specimen (under 18 years of age)

ART WORK (continued)

ABSTRACT ART, AMATEUR (in any of the above mediums)

Premiums: 1st - \$5.00; 2nd - \$4.00; 3rd - \$3.00; 4th - \$2.00; 5th - \$1.00

Class

- 422 Specimen (must be able to hang)

MIXED MEDIUM, AMATEUR

Premiums: 1st - \$5.00; 2nd - \$4.00; 3rd - \$3.00; 4th - \$2.00; 5th - \$1.00

Class

- 423 Specimen (must be able to hang)

PAINTINGS — OIL OR ACRYLIC, PROFESSIONAL

Premiums: 1st - \$8.00; 2nd - \$5.00; 3rd - \$3.00; 4th - \$2.00; 5th - \$1.00

Class

- 424 Portrait or figure
- 425 Animal
- 426 Landscape
- 427 Seascape
- 428 Still life

WATER COLORS, PROFESSIONAL

Premiums: 1st - \$8.00; 2nd - \$5.00; 3rd - \$3.00; 4th - \$2.00; 5th - \$1.00

Class

- 429 Portrait or figure
- 430 Animal
- 431 Landscape
- 432 Seascape
- 433 Still life

PASTELS, PROFESSIONAL

Premiums: 1st - \$8.00; 2nd - \$5.00; 3rd - \$3.00; 4th - \$2.00; 5th - \$1.00

Class

- 434 Specimen

DRAWINGS, PROFESSIONAL

Premiums: 1st - \$8.00; 2nd - \$5.00; 3rd - \$3.00; 4th - \$2.00; 5th - \$1.00

Class

- 435 Specimen

ABSTRACT ART, PROFESSIONAL

(in any of the above mediums)

Premiums: 1st - \$8.00; 2nd - \$5.00; 3rd - \$3.00; 4th - \$2.00; 5th - \$1.00

Class

- 436 Specimen

DIGITAL PAINTING

Premiums: 1st - \$5.00; 2nd - \$4.00; 3rd - \$3.00; 4th - \$2.00; 5th - \$1.00

Class

- 437 Specimen by Junior (under 18 years of age)
- 438 Specimen by Adult (18 years of age & over)

JUNIOR DIVISION (under 13 years of age)

Premiums: 1st - \$5.00; 2nd - \$4.00; 3rd - \$3.00; 4th - \$2.00; 5th - \$1.00

Class

- 439 Specimen, oil, watercolor, pastel, or drawing

ART WORK (continued)**THREE DIMENSIONAL PAINTING**

Premiums: 1st - \$5.00; 2nd - \$4.00; 3rd - \$3.00; 4th - \$2.00; 5th - \$1.00
(ex. painting on birdhouses, gourds, etc.)

Class

440 Specimen

WOOD

Premiums: 1st - \$5.00; 2nd - \$4.00; 3rd - \$3.00; 4th - \$2.00; 5th - \$1.00

Class

441 Sculpture, 3 dimensional
442 Woodworking, under 12" height
443 Woodworking, 12" to 60" height
444 Wood carving
445 Whittling
446 Woodburning
447 Intrasia

ENAMELWARE

Premiums: 1st - \$8.00; 2nd - \$5.00; 3rd - \$3.00

Class

448 Jewelry
449 Bowl
450 Specimen other than above
451 Specimen, made by a junior (under 18 years of age)

METAL WORK

Premiums: 1st - \$8.00; 2nd - \$5.00; 3rd - \$3.00

Class

452 Wire Dimensional sculpture
453 Jewelry
454 Specimen other than above
455 Specimen made by a junior (under 18 years of age)

LEATHERCRAFT

Premiums: 1st - \$3.00; 2nd - \$1.50; 3rd - \$1.00

Class

456 Purses
457 Belts
458 Wallets
459 Specimen other than listed

CERAMICS

Premiums: 1st - \$5.00; 2nd - \$4.00; 3rd - \$3.00

Class

484 Figurine or Bust
485 Jewelry
486 Bowl or Vase
487 Plaque
488 Other than above
489 Specimen by junior (under 18 years of age)

BLOWN GLASS (Maximum of 3 entries per class)

Premiums: 1st - \$5.00; 2nd - \$4.00; 3rd - \$3.00

Class

490 Bowl
491 Drinking Glass
492 Goblet
493 Lit Piece (lamp, sconce, etc)
494 Marble
495 Paperweight
496 Perfume Bottle
497 Vase
498 Abstract
499 Other than listed

**PHOTOGRAPHY
SECTION 500****ENTRY RULES**

1. Limit of one (1) entry per class.
2. Minimum size of prints to be 8" x 10".
3. All prints must be mounted or matted on mat board or foam core of 11" x 14". **ALL OTHERS WILL BE DISQUALIFIED.**
4. Color prints in any process are acceptable.
5. Nudes will be excluded.
6. All images must be photographed by the entrant.
7. Photograph image should be **NOT** be digitally changed or altered except in Classes 542.
8. Prints must be from past 12 months. Repeats are not acceptable.
9. Frames, Plexiglas or acetate coverings are **NOT** acceptable. Plastic cover sheets are acceptable.
10. If you do not want your name displayed during the fair, tape your entry tag closed at drop off.
11. **See General Entry Rules on page 6.**

Best of Show in Photography

Color.....\$20.00 & Rosette

Black & White.....\$20.00 & Rosette

AMATEUR

Premiums: 1st - \$5.00; 2nd - \$4.00; 3rd - \$3.00; 4th - \$2.00; 5th - \$1.00

Class

- 500 Portrait or figure of child under 9 (color)
501 Portrait or figure of child under 9 (black & white)
502 Portrait or figure of child 9 to 17 (color)
503 Portrait or figure of child 9 to 17 (black & white)
504 Portrait or figure of adult 18 & over (color)
505 Portrait or figure of adult 18 & over (black & white)
506 Still life (color)
507 Still life (black & white)
508 Human interest – animal, domesticated (color)
509 Human interest – animal, domesticated (black & white)
510 Human interest – animal, non-domesticated (color)
511 Human interest – animal, non-domesticated (black & white)
512 Human interest – (color)
513 Human interest – (black & white)
514 Landscape (color)
515 Landscape (black & white)
516 Seascape (color)
517 Seascape (black & white)
518 Nature (color)
519 Nature (black & white)
520 Abstract (color)
521 Abstract (black & white)
522 Architectural Design (color)
523 Architectural Design (black & white)
524 Non-traditional/Experimental (color)
525 Non-traditional/Experimental (black & white)
526 Cuyahoga County Fair (color)
527 Cuyahoga County Fair (black & white)
528 Cuyahoga County Landmark (color)
529 Cuyahoga County Landmark (black & white)
530 America 250 (color)
531 America 250 (black & white)
532 Extreme close-up (color - so close you can't identify the subject)
533 Extreme close-up (black & white - so close you can't identify the subject)

PHOTOGRAPHY (continued)

- 534 Sports (color)
- 535 Sports (black & white)
- 536 Train (color)
- 537 Train (black & white)
- 538 Farm Scene (color)
- 539 Gotcha! - Candid Shot
- 540 Selfie

ANTIQUES SECTION 600

ENTRY RULES

1. Dealers are not permitted to exhibit.
2. Articles over 50 years old will be given preference. Articles should be in a good state of preservation.
3. Exhibits are limited to a single item per entry ticket unless otherwise specified, but you are permitted to have 3 entries per class.
4. In this section exhibitors may have a maximum of 90 entries in Classes 600 through 899.
5. Criteria for judging antique exhibits: Beauty, Rarity, Relative Age, Condition and Quality.
6. In Class 849, ten Honorable Mentions at \$2.00 each, will be awarded if deemed worthy. 1st, 2nd or 3rd place will **NOT** be awarded because of complexity of class.
7. **See General Entry Rules on page 6.**

GLASSWARE

*Premiums: 1st - \$3.00; 2nd - \$2.00; 3rd - \$1.00
Best of Class - \$50 & Rosette*

Class

- 600 Bottle, free blown
- 601 Paper weight
- 602 Cruet, clear
- 603 Cruet, colored
- 604 Lamp, miniature
- 605 Oil Lamp
- 606 Tumbler, clear, 1 specimen
- 607 Tumbler, colored, 1 specimen
- 608 Goblet, clear, 1 specimen
- 609 Goblet, colored, 1 specimen
- 610 Syrup pitcher
- 611 Console set, 3 pieces
- 612 Water pitcher, clear
- 613 Water pitcher, colored
- 614 Bread plate, clear or colored
- 615 Cake stand, clear or colored
- 616 Castor set, clear or colored
- 617 Sugar shaker, clear or colored
- 618 Reamer (juicer) clear or colored
- 619 Glass compote, open
- 620 Glass compote, covered
- 621 Specimen, pressed glass, clear
- 622 Specimen, pressed glass, colored
- 623 Specimen, milk glass
- 624 Master salts, (3 different pieces)
- 625 Salt dips, (3 different pieces)
- 626 Salt & pepper shaker, clear (one pair)
- 627 Salt & pepper shaker, color (one pair)

ANTIQUES Glassware (continued)

- 628 Sugar & creamer
- 629 Toothpick holder
- 630 Glass perfume bottle, clear or colored
- 631 Glass bottles, other (3 different pieces)
- 632 Glass jars (3 different pieces)
- 633 Glass candlesticks (one pair)
- 634 Glass basket
- 635 Carnival glass
- 636 Ruby, specimen
- 637 Flash or souvenir glass
- 638 Slag Glass (e.g., Akro Agate)
- 639 Cambridge, specimen
- 640 Fenton, specimen
- 641 Fostoria, specimen
- 642 Heisey, specimen
- 643 Imperial, specimen
- 644 Tiffin, specimen
- 645 Westmoreland, specimen
- 646 Jadeite, specimen
- 647 Viking Glass, specimen
- 648 Blenko, specimen
- 649 Barware up to 3 piece
- 650 Pyrex or Fire King (up to 6 piece set)
- 651 Glass kitchen other
- 663 Opaque
- 664 Bohemian, engrave
- 665 Art Glass - clear engraved
- 666 Art Glass - satin engraved
- 667 Mary Gregory
- 668 Crackle
- 669 Cranberry
- 670 Black Amethyst (black but purple when held up to light)
- 671 Amethyst (purple)
- 672 Art Glass - black
- 673 Cobalt
- 674 Opalescent
- 675 Vaseline Glass
- 676 Stretch Glass
- 677 Depression glass, green
- 678 Depression glass, blue
- 679 Depression glass, pink
- 680 Depression glass, yellow
- 681 Depression glass, clear
- 682 Depression glass, red
- 683 Glass vase other than listed, under 8"
- 684 Glass vase other than listed, 8" and over
- 685 Glass bell
- 686 Glass specimen other than listed
- 687 Glass specimen with advertising

CUT GLASS, American Specimen

*Premiums: 1st - \$3.00; 2nd - \$2.00; 3rd - \$1.00
Best of Class - \$25 & Rosette*

Class

- 690 Bowl
- 691 Vase
- 692 Compote, stemmed
- 693 Pitcher, large
- 694 Cream and sugar
- 695 Specimen cut glass
- 696 Cruet or decanter



**DOGS ARE NOT PERMITTED ON THE
FAIRGROUNDS UNLESS THEY ARE
SERVICE DOGS. LEASHES
ARE MANDATORY.**

WE REQUEST THAT ALL SERVICE DOGS WEAR
A VEST WHILE ON THE FAIRGROUNDS AND
OWNERS KEEP A COPY OF THEIR REGISTRY
ON THEIR PERSON.



ANTIQUES (continued)

CHINA SECTION 700

CHINA

Premiums: 1st - \$3.00; 2nd - \$2.00; 3rd - \$1.00
Best of Class - \$25 & Rosette

Class

- 700 Egg Cup (not coddler)
- 701 Bisque or Parian
- 702 Flow Blue
- 703 Ironstone
- 704 Lustre Ware
- 705 Fiestaware, specimen
- 706 Czechoslovakian
- 707 Dutch (e.g., Delft)
- 708 English - Wedgwood
- 709 English - Other (e.g., Staffordshire)
- 710 French (e.g., Limoges)
- 711 German (e.g., Bavarian, Prussian)
- 712 Irish (e.g., Beleek)
- 713 Italian (e.g., Capodimonte)
- 714 Japanese - Lefton
- 715 Japanese - Other (e.g., Noritake)
- 716 Occupied Japan, single figurine
- 717 Occupied Japan, single specimen, tableware
- 718 Occupied Japan, single specimen, other
- 719 Tea Set
- 720 Children's Tea Set
- 721 Vase, under 8"
- 722 Vase, 8" or over
- 723 Platter, large
- 724 Vegetable dish, covered
- 725 Vegetable dish, no cover
- 726 Restaurant china, specimen
- 727 Compote
- 728 Pitcher, over 12"
- 729 Pitcher, 8" to 12"
- 730 Pitcher or creamer, under 8"
- 731 Tureen
- 732 Sugar and creamer
- 733 Salt & pepper shaker
- 734 China candlesticks, one pair
- 735 China bell
- 736 Tea pot
- 737 Chocolate pot
- 738 Cup and saucer
- 739 Cup and saucer, demi-tasse
- 740 Figurine, animal
- 741 Figurine, other, under 6"
- 742 Figurine, other, 6" or over
- 743 Plate, historical American or local view or event
- 744 Plate, calendar
- 745 Plate, ABC or nursery rhyme
- 746 Plate, souvenir, under 8"
- 747 Plate, decorated, 8" or over
- 748 Plate, decorated, under 8"
- 749 Plate, souvenir, 8" or over
- 750 Plate, decal design, under 8"
- 751 Plate, decal design, 8" or over
- 752 Nippon single specimen
- 753 Head Vase
- 754 Place Setting (Max 7 pieces)
- 755 Miscellaneous China

ANTIQUES (continued)

POTTERY

Premiums: 1st - \$3.00; 2nd - \$2.00; 3rd - \$1.00
Best of Class - \$25 & Rosette

Class

- 760 Cowan
- 761 Frankoma
- 762 Hall
- 763 Hull
- 764 Haeger
- 765 McCoy
- 766 Rookwood
- 767 Roseville
- 768 Shawnee
- 769 Weller
- 770 Brownware
- 771 Majolica
- 772 Spongeware
- 773 Specimen, other than above, 10" or over (height)
- 774 Specimen, other than listed, under 10" (height)
- 775 Cookie Jar

SINGLE SPECIMEN ANTIQUES SECTION 800

Premiums: 1st - \$3.00; 2nd - \$2.00; 3rd - \$1.00
Best of Class - \$50 & Rosette

Class

- 800 Jewelry
- 801 Watch
- 802 Parasol
- 803 Hat, women's
- 804 Hat, men's
- 805 Hat, child's
- 806 Clothing, women's (up to 3 pc. set)
- 807 Clothing, men's (up to 3 pc. set)
- 808 Clothing, children's (up to 3 pc. set)
- 809 Purse
- 810 Mens and ladies accessories, single item
- 811 Toiletry Items (up to 6 pcs.)
- 812 Christening gown (up to 3 pc. set)
- 813 Coverlet
- 814 Quilt
- 815 Household linen, one piece
- 816 Decorative needlework
- 817 Sterling or silverplate holloware
- 818 Sterling or silverplate flatware
- 819 Pewter - single item
- 820 Brass - single item
- 821 Toy, cast iron
- 822 Doll furniture
- 823 Teddy bear
- 824 Doll, bisque
- 825 Doll, composition
- 826 Doll, other than above
- 827 Toy, other than listed above
- 828 Soapstone
- 829 Cloisonné specimen
- 830 Framed print
- 831 Framed photograph
- 832 Framed painting
- 833 Papier-mâché article
- 834 Lunch Box/Bucket

ANTIQUES (continued)**Class**

- 835 Kitchen collectible, single specimen
- 836 Sewing collectible, single specimen
- 837 Advertising Memorabilia (not paper)
- 838 Fountain Pen
- 839 Metal bell
- 840 Bells, string
- 841 Music box
- 842 Basket, woven wood or cane (no glass)
- 843 Book Ends (1 set)
- 845 Table lamp
- 846 Camera
- 847 Clock
- 848 Hammered Aluminum
- 849 Specimen, single article, other than listed
- 850 Christmas Collectibles
- 851 Lantern
- 852 Tin or tole household article
- 853 Kettle, brass or copper (large size)
- 854 Television Memorabilia
- 855 Stump the Judge
- 856 Bicentennial Memorabilia
- 857 Radio
- 858 Musical instrument, in working order
- 859 Enamelware
- 860 Wooden household article
- 861 Cast iron household article
- 862 Chair
- 863 Furniture, wooden, other than chair
- 864 Rocking chair, adult or child's
- 865 Farm tools
- 866 Hand tools
- 867 Cradle, infants
- 868 Baby buggy
- 869 Doll buggy
- 870 Small electric household item

ANTIQUÉ COLLECTIONS

Collections **MUST** have 6 pieces to qualify for judging.
 Premiums: 1st - \$3.00; 2nd - \$2.00; 3rd - \$1.00
 Best of Class - \$25 & Rosette

Class

- 871 Brass (6 pieces)
- 872 Copper (6 pieces)
- 873 Pewter (6 pieces)
- 874 Tin (6 pieces)
- 875 Banks (6 pieces)
- 876 Trivets (6 pieces)
- 877 Mustache cups or shaving mugs (6 pieces)
- 878 Beer steins/Mugs (6 pieces)
- 879 Toothpick holders (6 pieces)
- 880 Insulators (6 pieces)
- 881 Spoons, max. exhibit size 24" x 24"
- 882 Buttons/Pins, max. exhibit size 18" x 18"
- 883 Hat pins, max. exhibit size 18" x 18", minimum of 6 pins
- 884 Fans, max. exhibit size 24" x 24" (6 pieces)
- 885 Coins, max. exhibit size 18" x 18"
- 886 Marbles, max. exhibit size 18" x 18"
- 887 Glass (6 pieces) max exhibit size 18" x 24"
- 888 Collection other than above, maximum size 18" x 18"

ANTIQUES (continued)**ANTIQUÉ PAPER ITEMS**

Class 889-892 **MUST** be mounted for display on table - max size 18" x 18"
 Premiums: 1st - \$3.00; 2nd - \$2.00; 3rd - \$1.00;
 Best of Class - \$10 & Rosette

Class

- 889 Birthday cards (6)
- 890 Valentines (6)
- 891 Christmas cards (6)
- 892 Picture post cards (6)
- 893 Cookbook
- 894 Newspaper article
- 895 Advertising Memorabilia
- 896 Children's Book
- 897 Sheet Music
- 898 Non-Fiction Book
- 899 Specimen other than listed

ANTIQUÉ WEAPONS & ACCOUTREMENTS

SECTION 900

Articles judged on Condition, Age, and Rarity.
 Premiums: 1st - \$10.00; 2nd - \$5.00; 3rd - \$3.00
 Best of Show Weapons - \$20.00 & Rosette

Class

- 900 Flintlock pistol
- 901 Percussion single shot pistol
- 902 Single action revolver
- 903 Double action revolver
- 904 Derringer
- 905 Firearms curios, combination unusual and rare weapons
- 906 Automatic pistol
- 907 Flintlock rifle
- 908 Percussion rifle
- 909 Lever action repeating rifle
- 910 Cartridge rifle
- 911 Shotguns
- 912 Sabre or sword
- 913 Military bayonet
- 914 Shot flasks or Powder flasks
- 915 Pistol & sword belts with buckles
- 916 Weapon accoutrements
- 917 Pocket knife
- 918 Specimen other than above

MILITARY MEMORABILIA**Class**

- 919 Civil War, single specimen
- 920 WWI, single specimen
- 921 WWII, single specimen
- 922 Korean War, single specimen
- 923 Other war, single item

\$5 FAIR ADMISSION

TICKET FOR KIDS, VETS & SENIORS TICKET

Tuesday, August 11th ONLY

For Kids 3 to 12, Veterans (with ID) and Seniors (60 and over)

GENERAL ADMISSION: \$10 • RIDE TICKETS SEPARATE

CHILDREN 2 AND UNDER & ACTIVE MILITARY (WITH ID) ARE FREE EVERY DAY!

**DOMESTIC ARTS & HOBBIES
DEPARTMENT 4-B**

DISPLAYED IN BUILDING 29

JAMES LEWANDOWSKI

Director-At-Large for Arts & Crafts Entries

Contact Info: FairGuy01@yahoo.com

SECTIONS

Culinary • Wine • Beer

Hobby Show • Table Setting • Ironing Contest

**IMPORTANT DATES FOR
DOMESTIC ARTS & HOBBIES
DEPT 4-B ONLY**

Fri., July 24 | PHYSICAL & ONLINE ENTRY FORMS DUE

**Thurs., Aug. 6 | Wine & Beer Drop-Off for Classes 200-299
(In Arts & Crafts Bldg) • 6pm to 8pm**

**Fri., Aug. 7 | Hobbies, Wine, Beer
9am to 8pm**

**Sat., Aug. 8 | Hobbies, Wine, Beer
Drop Off • 9am-4:00pm**

**Sun., Aug. 9 | Culinary Entries Sunday Show
9am-11:30am**

**Thurs., Aug. 13 | Culinary Entries Thursday Show
9am-10am
Pies 9am-12:30pm**

**Mon., Aug. 17 | ALL ENTRIES MUST BE PICKED UP
9am -7pm**

**CULINARY
SECTION 100**

ENTRY RULES

1. Limit of two (2) entries per class.
2. Rolls and Muffins are to be exhibited 6 on a plate.
3. Cookies are to be exhibited 6 on a plate.
4. Candies are to be exhibited 8 pieces on a plate.
5. Bring entry in zip-lock bag.
6. Paper plates only please.
7. Any type pie pan may be used, but Fair Management will **NOT** be responsible for pan. Mark pan with an address label.
8. Pies (classes 164-192) can be picked up Thursday after the live judging of pies.
9. Items that can withstand summer weather – Cookies, Candies – can be dropped off Sat. 9am-4P.M. before fair week.
10. Descriptive name, and type of cookie with recipe is encouraged
11. *See General Entry Rules on page 6.*

CULINARY (continued)

SUNDAY (BEFORE FAIR) SHOW

Drop-off 9:00am -Noon SUN

COOKIES

Premiums: 1st - \$3.00; 2nd - \$2.00; 3rd - \$1.00
Best of Cookies: \$15.00 & Rosette

Class

- 100 Rolled cookie
- 101 Drop cookie
- 102 Bar cookie
- 103 Pressed cookie
- 104 Refrigerator cookie
- 105 Filled cookie
- 106 Chocolate chip cookie
- 107 Oatmeal cookie
- 108 Peanut butter cookie
- 109 Brownie
- 110 Shaped/Formed cookie
- 111 Gluten Free cookie
- 112 No-bake cookie
- 113 Macaroon
- 114 Cookie, any type, by a junior under 18 yrs.
- 115 Cookie, any type, by a man
- 116 Cookie, any type, by a senior citizen
- 117 Cookie other than above

PASTRY (Whole Pastry or 8 Pieces)

Premiums: 1st - \$4.00; 2nd - \$3.00; 3rd - \$2.00

Class

- 120 Pastry
- 121 Roll (i.e. nut, poppyseed, etc.)
- 122 Gluten Free pastry

DECORATED CAKES AND NOVELTIES

(May Use Cake Form)

Premiums: 1st - \$10.00; 2nd - \$6.00; 3rd - \$4.00

Class

- 123 Cupcake cake (min 6)
- 124 Iced cookies (min 6)
- 125 Special Occasion
- 126 Wedding
- 127 Novelty
- 128 Gingerbread House
- 129 Birthday



YEAST GOODS

Premiums: 1st - \$3.00; 2nd - \$2.00; 3rd - \$1.00
Best of Bread: \$10.00 & Rosette
Best of Rolls: \$10.00 & Rosette

Class

- 130 White bread, one loaf
- 131 Whole wheat bread, one loaf
- 132 Rye bread, one loaf
- 133 Foreign or nationality bread, one loaf
- 134 Savory (onion, tomato, etc.) one loaf
- 135 Gluten Free, one loaf
- 136 Dinner rolls - parker house, clover leaf, etc.
- 137 Sweet rolls - cinnamon, pecan, etc.
- 138 Rolls – savory (onion, garlic knots, etc.)
- 139 Rolls – gluten free
- 140 Holiday or special occasion sweet rolls, tea rings, etc.
- 141 Kuchen or coffee cake with or without yeast
- 142 Bread – no yeast (quick bread) one loaf

CULINARY (continued)

- 143 Zucchini bread
- 144 Banana bread
- 145 Quick bread – savory, one loaf
- 146 Quick bread – gluten free, one loaf
- 147 Cornbread, 6 pieces or one loaf
- 148 Sourdough
- 149 Specimen other than above

CANDY

Premiums: 1st - \$3.00; 2nd - \$2.00; 3rd - \$1.00;
Best of Candy \$10 & Rosette

Class

- 150 Caramel
- 151 Chocolate fudge
- 152 White fudge
- 153 Fudge, other - label with type
- 154 Peanut brittle (or other nut)
- 155 Toffee
- 156 Sea foam/honeycomb candy
- 157 Chocolate creams/Truffles
- 158 Chocolate bonbons
- 159 Chocolate nut clusters
- 160 Fruit cluster, with or without nuts
- 161 Hard candy
- 162 Candy, any type, by a senior citizen
- 163 Specimen candy other than above

THURSDAY SHOW

Drop off 9 A.M. - 10 A.M. Thursday of Fair Week

CAKES (Bring Whole Cake)

Premiums: 1st - \$6.00; 2nd - \$4.00; 3rd - \$3.00
Best of Cakes \$15 & Rosette

Class

- 164 Coffee Cake
- 165 Chiffon cake (not iced)
- 166 Angel food cake (not iced)
- 167 Sponge cake (not iced)
- 168 White layer cake
- 169 Yellow layer cake
- 170 Spice layer cake
- 171 Chocolate layer cake
- 172 Pound cake
- 173 Cake, by junior (under 18) not coffee cake
- 174 Cake by a man
- 175 Cake by a woman
- 176 Muffins (min 6)
- 177 Cupcakes, Cake balls/pops
- 178 Specimen other than above
- 179 Specimen made by a senior citizen

PIEROGI (Exhibit 4 on a plate)

Premiums: 1st - \$4.00; 2nd - \$3.00; 3rd - \$2.00
Best of Pierogi: \$10 & Rosette

Class

- 180 Pierogi – Potato/cheese
- 181 Pierogi – Kraut
- 182 Pierogi – Fruit
- 183 Pierogi – Sweet
- 184 Pierogi – Other

CULINARY (continued)

PIES (In 8" or 9" pie pan)

Live judging 1:00 P.M. in the Home & Hobby Building.
Pies can be dropped off 9:00 A.M. - 12:30 P.M.
Premiums: 1st - \$5.00; 2nd - \$4.00; 3rd - \$2.00;
Best of Pies: \$25.00 & Rosette

THURSDAY, AUGUST 13TH AT 1:00PM | HOME & HOBBY BUILDING



PLEASE COME WATCH AS OUR JUDGES TASTE EACH PIE
AND CHOOSE THE BEST IN EACH CATEGORY!



Class

- 186 Apple
- 187 Berry
- 188 Cherry
- 189 Peach
- 190 Rhubarb
- 191 Pumpkin
- 192 Other than above - with label (not refrigerator type)
- 193 Chocolate
- 194 Citrus
- 195 Cheesecake
- 196 Coconut Cream
- 197 Banana Cream
- 198 Savory
- 199 Other – refrigerator type

WINE & BEER SECTION 200

HOMEMADE WINE ENTRY RULES

1. Wines may be made from grapes, other fruit, berries, vegetables, grains, other suitable ingredients, or blends of these.
2. Ingredients may be fresh, canned, dried, concentrated, or otherwise preserved.
3. Wines should be amateur- homemade by the process of fermentation and must not be blended with commercial wines.
4. Wines appropriate for fortification may be fortified with suitable commercial spirits in dessert class only.
5. A single bottle may be entered in only one class.
6. Exhibitors can enter 2 wines per class provided they are different varieties.
7. Each wine entry must be identified as to major ingredient(s) - grape varietal, fruit, berry, etc. and percent of each.
8. Any exhibitor who would like to pick up his/her wine after judging should bring a bottle of colored liquid (similar in color to the one entered) to the Arts & Crafts Building between 4:00 P.M. - 5:00 P.M. on Sunday preceding fair week. An exchange bottle must be presented for each bottle being taken. Please bring your claim checks to facilitate an easy exchange. Ribbons remain with bottle being exhibited during the Fair.
9. Wine entries will be accepted at the Home & Hobby Building, Fri. 9:00 A.M. - 8:00 P.M.; and Sat. 9:00 A.M. - 4:00 P.M. (before Fair Week).
10. See General Entry Rules on page 6.

INDOOR FLEA MARKET

NOVEMBER 7-8, 2026

DECEMBER 5-6, 2026

JANUARY 2-3, 2027

FEBRUARY 6-7, 2027

MARCH 6-7, 2027



CULINARY (continued)

RULES FOR PRESENTATION

1. Still wines must be submitted in clear, green or brown smooth glass bottles of approximately 26-ounce (4/5 quart) capacity or metric equivalent.
2. Bottles of the general shape called "Bordeaux", "Burgundy" or "Rhine" are acceptable.
3. Bottles must have nearly straight sides and may be closed with cork, screw top or plastic stopper.
4. Sparkling wines must be in standard (green or clear) champagne bottles with wired conventional champagne stoppers.
5. Capsules, foils, or other seals must not be used over the bottled closure.
6. Bottles must be filled so that one or two inches of air space remains under the fully installed top or cork.
7. **NO** labels. You may include a label to be displayed after judging.

BEST OF SHOW: Dry - \$50 & Rosette / Sweet - \$50 & Rosette

HOMEMADE WINES

Premiums: 1st - \$4.00; 2nd - \$3.00; 3rd - \$2.00; 4th - \$1.00

Class

- 200 Dry red table wine — fresh vinifera
- 201 Dry red table wine — French hybrid grape
- 202 Dry red table wine — fresh labrusca grape
- 203 Dry red table wine — grape concentrate
- 204 Dry red table wine — other than grape, fresh or concentrate
- 205 Dry white table wine — fresh vinifera
- 206 Dry white table wine — French hybrid grape
- 207 Dry white table wine — fresh labrusca grape
- 208 Dry white table wine — grape concentrate
- 209 Dry white table wine — other than grape, fresh or concentrate
- 210 Rose/Blush table wine
- 211 Sweet red wine — grape
- 212 Sweet red wine — other than grape - i.e., fruit, berry, flower or vegetable
- 213 Sweet red wine — from concentrate
- 214 Sweet white wine — grape
- 215 Sweet white wine — other than grape - i.e. fruit, berry, flower or vegetable
- 216 Sweet white wine — from concentrate
- 217 Red Dessert — grape, fruit, or berry
- 218 White Dessert — grape, fruit, or berry
- 219 Honey/Mead
- 220 Sparkling Wine

HOMEMADE BEER ENTRY RULES

1. Beer must be submitted in green or brown glass bottles that were made to hold beer, and are closed with crown style caps, rubber stoppers, or screw caps.
2. Do not label bottles — they should be free of markings and letterings.
3. Each entry is to consist of 2 bottles and must be labeled. A third bottle may be included with a label for display purposes only.
4. Styles are grouped for the purpose of listing them in this book only. Classes with sufficient entries will be subdivided.
5. Exhibitors may enter more than one beer per class provided they are of different types.
6. Beer entries will be accepted at the Home & Hobby Building, Fri. 9:00 A.M. - 8:00 P.M., Sat. 9:00 A.M. - 4:00 P.M. and Sun. 9:00 A.M. - 11:30 A.M. (Before Fair Week) Beer will be kept refrigerated until judging.
7. **See General Entry Rules on page 6.**

CULINARY (continued)

HOMEMADE BEER

Premiums: 1st - \$4.00; 2nd - \$3.00; 3rd - \$2.00; 4th - \$1.00
BEST OF SHOW: \$10.00 & Rosette

Class

- 289 Light Lager, Pilsner, European Amber Lager
- 290 Light Ale, Light Hybrid Beer, Amber Hybrid Beer, American Ale
- 291 English Pale Ale, Scottish & Irish Ale
- 292 English Brown Ale, Porter
- 293 Bock
- 294 Stout
- 295 India Pale Ale
- 296 German Wheat & Rye Beer, Belgian & French Ale, Specialty Beer
- 297 Belgian Strong Ale, Sour Ale
- 298 Fruit Beer, Spice/Herb/Vegetable Beer
- 299 Strong Ale, Smoke-Flavored & Wood-Aged Beer

HOBBY SHOW

SECTION 300 • 400 • 500

Drop off Friday 9-8, Saturday 9-4

ENTRY RULES

Limit of one entry per class and one item per entry unless otherwise specified, for Hobby Show.

1. **MAXIMUM** size per exhibit - 24" x 24" in all classes except doll houses. Doll houses shall not exceed 24" x 43" at the base.
2. No limit on collection pieces unless specified. Rule #1 applies.
3. Pre-mounting of the exhibits is **STRONGLY** recommended and a factor in judging. If display can be hung, please include hanging facilities.
4. Due to limited space, exhibits will be placed on display on a first come basis; only those entering are allowed to set up exhibits. Exhibits may be moved after you place them by management to correct overcrowding of exhibits.
5. Classes 300 through 310 are miscellaneous classes. A hobby must be entered in its specific class when such a class is listed, **NOT UNDER "SPECIMEN OTHER THAN ABOVE."** (For example, a collection of shells entered by a junior, must be entered in Class 331 not in Class 301 or 335).
6. All exhibits must have been made or collected by the exhibitor.
7. Entries recognized as having been entered before are not eligible for first place.
8. **See General Entry Rules on page 6**

\$5 FAIR ADMISSION

FOR KIDS, VETS & SENIORS

Tuesday, August 11th ONLY

For Kids 3 to 12, Veterans (with ID) and Seniors (60 and over)

GENERAL ADMISSION: \$10 • RIDE TICKETS SEPARATE

CHILDREN 2 AND UNDER & ACTIVE MILITARY (WITH ID) ARE FREE EVERY DAY!

HOBBIES

Premiums: 1st - \$5.00; 2nd - \$4.00; 3rd - \$3.00; 4th - \$2.00; 5th - \$1.00
Best of Hobbies \$10 & Rosette

Class

- 300 Hobby MADE by youth, 12 years and under, limit 3 pieces
- 301 Hobby COLLECTED by youth, 12 years and under
- 302 Hobby MADE by junior, 13 to 18 years, limit 3 pieces
- 303 Hobby COLLECTED by junior, 13 to 18 years
- 304 Hobby MADE by woman, 18 years and over, limit 3 pieces
- 305 Hobby COLLECTED by woman, 18 years and over
- 306 Hobby MADE by man, 18 years and over, limit 3 pieces
- 307 Hobby COLLECTED by man, 18 years and over
- 308 Decoupage
- 309 Miniature hobby, made or collected, mounted, not to exceed 8" x 8" or 64 sq. in.
- 310 Hobby made by a senior citizen, limit 5 pieces
- 311 Ecology Specimen - Articles entered in this class MUST be made from recycled material.
- 312 Doll House, unfurnished
- 313 Doll House, furnished
- 314 Room Boxes
- 315 Origami (up to 3 pieces)
- 316 Paper model/folding
- 317 Paper mache, 1 item
- 318 Reclaimed/refurbished furniture - 1 piece
- 319 Lite-Brite, original pattern

MODELS (Two Entries Per Class) — Not to exceed 3 feet

Premiums: 1st - \$3.00; 2nd - \$2.00; 3rd - \$1.00
Best in Models \$10.00 & Rosette

Class

- 320 Military vehicle, assembled from kit by adult - NO REPEATS
- 321 Military vehicle, assembled from kit by junior - NO REPEATS
- 322 Plane, rocket, boat, automobile, original (no kit parts) by adult - NO REPEATS . See Rule 7.
- 323 Plane/Rocket assembled from kit by adult
- 324 Plane/Rocket assembled from kit by junior
- 325 Boat, assembled from kit by adult
- 326 Boat, assembled from kit by junior
- 327 Car/Truck, assembled from kit by adult
- 328 Car/Truck assembled from kit by junior
- 329 Specimen, model other than above by adult
- 330 Specimen, model other than above by junior

COLLECTIONS (Not Antique)

You may have up to, but not over the number listed after each class.
Do not exceed the number after each class.
Pre-mounting of exhibit is STRONGLY recommended.
Premiums: 1st - \$3.00; 2nd - \$2.00; 3rd - \$1.00
Best in collection \$10 & Rosette

Class

- 331 Shells
- 332 Insects
- 333 Rocks and fossils
- 334 Gems
- 335 Nature specimen other than above
- 336 Pencils (no limit, note rule #1)
- 337 Shot Glasses (30 pieces)
- 338 Fishing lures or flies (15 pieces)
- 339 Brass (6 pieces)
- 340 Copper, not coins (6 pieces)
- 341 Banks (6 pieces)
- 342 Golf Balls (6 pieces)
- 343 Beer steins or mugs (6 pieces)
- 344 Spoons (30 pieces)
- 345 Buttons (clothing, clip, pin-on) (15 pieces)
- 346 Comic Books (6 pieces)
- 347 Sports cards, 1 album

HOBBIES (continued)

- 348 Sports card, 1 album by youth 12 years and under
- 349 Other trading cards, 1 album
- 350 Stickers (1 album)
- 351 Cloth patches/badges (15 pieces)
- 352 Match books (up to 25 pieces)
- 353 Baseball caps (8 pieces)
- 354 Key Chains (15 pieces)
- 355 Magnets (15 pieces)
- 356 Rubber Stamps (15 pieces)
- 357 Post Cards (15 pieces)
- 358 Beer or Soda pop cans (15 pieces)
- 359 Coffee Mugs (6 pieces)
- 360 Beanie-type Babies (15 pieces)
- 361 Teddy Bears (6 pieces)
- 362 Die-cast Toys (i.e. Hot Wheels, cars) (15 pieces)
- 363 Fast Food Collectibles (15 pieces)
- 364 Money (25 pieces)
- 365 Lunch Boxes (6 pieces)
- 366 License Plates (8 pieces)
- 367 Nutcrackers (8 pieces)
- 368 Pressed Pennies (no limit, note rule #1)
- 369 Pens (no limit, note rule #1)

DOLLS (Not Antique)

Premiums 1st-\$3.00, 2nd-\$2.00 3rd-\$1.00
Best in Dolls \$10.00 & Rosette

Class

- 380 Pair, set or couple (2 dolls)
- 381 Hand-made Doll
- 382 Doll with home-made clothes
- 383 Character doll
- 384 Religious doll/Figuerine
- 385 Troll doll (maximum 5)
- 386 Barbie Dolls (maximum 5)
- 387 Collection of nationality dolls (maximum of 5)
- 388 Collection of dolls, other than nationality (maximum of 5)
- 389 Specimen doll other than above (Single doll)

DECORATED CHRISTMAS TREE SECTION 400

ENTRY RULES

1. Exhibitor is responsible for supplying their own tree, no size restrictions.
2. Electricity is available.
3. Tree base should be secured to a 2'x2' board to prevent tipping.
4. Secure all items, building is very breezy.
5. **See General Entry Rules on page 6.**

Premiums: 1st - \$15.00; 2nd - \$10.00; 3rd - \$5.00 ; 4th

Class

- 401 Miniature Decorated Christmas Tree under 3'
- 402 Decorated Christmas Tree over 3'
- 403 Tree with Non-Christmas Theme under 3'
- 404 Tree with Non-Christmas Theme over 3'
- 405 Miniature with Patriotic 250 American theme under 3'
- 406 Tree Patriotic 250 American theme over 3'

TABLE SETTING SECTION 500

ENTRY RULES

1. Limit of one entry per class.
2. Exhibitor is responsible for furnishing their own table for two (2).
3. Exhibit should include tablecloth, napkin, etc. for two (2), centerpiece, and menu.
4. Signs and promotional materials are permitted.
5. Secure all items, building is breezy.
6. Table settings are judged on general appearance, completeness, decorating, originality, menu, correct plating, and adhering to the rules above.
5. See *General Entry Rules on page 6*.

AMATEUR

Premiums: 1st - \$15.00; 2nd - \$10.00; 3rd - \$5.00 ; 4th - \$3.00

Class

- 501 Formal
- 502 Holiday
- 503 Tea
- 504 Brunch
- 505 Picnic
- 506 Party
- 507 250 American Celebration Theme
- 508 Table set-up by Junior (under 18 yrs)

IRONING CONTEST SECTION 600

ENTRY RULES

1. Contest will take place at 6:00 P.M. Friday of Fair Week in the Olde Barn Pavilion.
2. Exhibitors will compete in groups of 5, judges will create groups based on age at time of contest.
3. Iron and board will be provided. Contestants are welcome to bring their own iron and/or starch.
4. Each exhibitor will have 6 minutes to iron a cotton button down men's dress shirt from a wrinkled state.
5. See *General Entry Rules on page 6*.

Premiums: 1st - \$15.00; 2nd - \$10.00; 3rd - \$5.00

Class

- 601 Live Ironing Competition

LITE PEG CONTEST SECTION 700

ENTRY RULES

1. Contest will take place at 6:00 P.M. Thursday of Fair Week in the Home & Hobby Building.
2. Exhibitors will be provided a lite board & random selection of pegs and colors.
3. Each exhibitor will have 20 minutes to create an original Celebrate America 250 design.

Premiums: 1st - \$15.00; 2nd - \$10.00; 3rd - \$5.00

Class

- 701 Live Lite Peg Competition Adult (18 years or older)
- 702 Live Lite Peg Competition Junior (under 18 years)

CANINE DISPLAY DEPARTMENT 12

DISPLAYED IN JR. FAIR BLDG

HOLLY EVERHART

Director-At-Large for Junior Fair, 4H, Canine & Sponsorships
Contact Info: CCFJrFair@yahoo.com

ALISON UNGAR, SUPERINTENDENT

* See Jr. Fair department for entry dates

ENTRY RULES

1. Items previously exhibited in the Fair, or any other Fair, in this Department or others, are not eligible.
2. All exhibits must be solely the work of the exhibitor.
3. Exhibitors are limited to a single item per class unless otherwise specified under the class.
4. Maximum size per exhibit 24"x 24" unless otherwise stated.
5. All entries assembled by or made by the exhibitor are to have been completed in the past year unless otherwise noted.
6. All items must showcase a canine, or be used for a canine.
7. Photos are to be 5"x 7", securely mounted on an 8"x 10" mat.
8. Drawing and painting must be matted and ready to hang. No glass on frames.
9. See *General Entry Rules on page 6*.

SECTION 100

Premiums 1st-\$3.00, 2nd-\$2.00 3rd-\$1.00

Class

- 1 Canine Painting - any medium
- 2 Canine Drawing - any medium
- 3 Canine Handicraft small (needlework, cross stitch, crochet, quilt), Min size 24"x 24" - not ribbons
- 4 Canine Handicraft large (needlework, cross stitch, crochet, quilt), Min size 25"x 25" - Max size 60"x 60" - not ribbons
- 5 Canine Felted object
- 6 Canine Ceramic - made, not bought
- 7 Canine Collection (6-10 pieces)
- 8 Embroidered design on article of clothing
- 9 Decorated garment - not embroidered
- 10 Canine Toy - made
- 11 Canine Leash - usable - made
- 12 Decorated Treat Jar
- 13 Canine Action Photo - Color (must be your photo, not one from a professional that you bought) - no humans
- 14 Canine Still Photo - Color (must be your photo, not one from a professional that you bought) - no humans
- 15 Canine Action Photo - Black & White (must be your photo, not one from a professional that you bought) - no humans
- 16 Canine Still Photo - Black & White (must be your photo, not one from a professional that you bought) - no humans
- 18 Ribbon Display - Container (glass blocks, lanterns, etc)
- 21 Machine or Hand Sewn Canine Clothing (for the Canine to wear)

GARDEN & PRODUCE

DEPARTMENT 25

DISPLAYED IN BUILDING 16

TOM SABREY

Director-At-Large for Rabbits, Cavies, Poultry, Floral,
Produce, Sheep & Swine
Contact Info: Rabbitman83@aol.com

Gail Holzman
Superintendent

THEME: SUMMERTIME FUN

1st SHOW ENTRY TIME

Accepted on Saturday, preceding the Fair
from 9:00 a.m. - 4:00 p.m.
and on Sunday from 9:00 a.m. - Noon

2nd SHOW ENTRY TIME

Accepted on Wednesday of Fair Week
*From 6:00 p.m. - 9:30 p.m.
and on Thursday of Fair Week from 8:00 a.m. - 9:30 a.m.

JUDGING

1ST SHOW, 1:00pm
Sunday Before Opening Day

2ND SHOW, 10:00am
Thursday of Fair Week

ALL JUDGING IS CLOSED

COMMUNITY GARDEN COMPETITON

ENTRY RULES

- The Entry Requirements of the Cuyahoga County Fair apply to this department in addition to the following.
- All products exhibited **MUST BE GROWN BY THE EXHIBITOR** except entries in Section 100, Class 1 and Section 500, Classes 21-22, Section 600 Class 1.
- Except in the case of displays, fruits or vegetables incorrectly labeled will not be eligible for premiums. Mistakes in names will be corrected by the judge(s) whenever possible.
- Only one plate of each variety or one collection or display may be entered in competition for the same premium by an individual grower or firm.
- There will be two (2) shows in all Divisions, Sections or Classes marked with an asterisk (*).
- To be eligible to compete in the second show there must be a rearrangement or replacement of exhibit, plus a new tag displayed on each entry.
- Be sure to specify on your entry form if you are entering the first, second or both shows. If there is only one show, check first show box on entry form. If no show is checked, then the entries will only be entered in the first show.**
- All exhibits/entries can be picked up on Sunday, the last day of the Fair, from 8:30 p.m. - 10:00 p.m. or Monday 2:00 p.m. - 7:00 p.m. Exhibitor Tag required for pickup. Any exhibits

GARDEN & PRODUCE (continued)

- not claimed will be disposed of at the discretion of the Director or the Superintendent. Award ribbons not claimed will be available at the Fair Office the week following the Fair.
- Any exhibits showing undo spoilage during the Fair will be disposed of at the discretion of the Director or Superintendent.
 - Plates are available for display of all Fruits and Vegetables.
 - The Garden Produce Section is open to all ages with the exception of the Senior Citizen Gardeners. Senior Citizen Gardeners are 65 years and older at the time of entry.
 - Size of display areas and number of exhibits will be determined solely by the Director or Superintendent of the Department.
 - All materials in displays must meet local fire department regulations.
 - The Director or Superintendent of the Department has the final decision on the suitability of any entry or display.
 - An honorable mention ribbon may be awarded at the discretion of the judges. No prize money.
 - No Blue Ribbon, Rosette, or Trophy winning entries are eligible for entry in second show.
 - First, second, third and fourth place will receive a ribbon at the discretion of the judges.
 - ALL judging is closed to the public.
 - Judges have the right to cut open any fruit or vegetable.
 - See **General Entry Rules on page 6.**

EDUCATIONAL GARDEN DISPLAYS SECTION 100

COMMUNITY GARDEN COMPETITION

1st	2nd	3rd	4th	5th
\$150.00	\$100.00	\$75.00	\$50.00	Rosette
Rosette	Rosette	Rosette	Rosette	

CLASS

- Community Garden Display (see next page for Entry Rules for this Section)

ENTRY RULES

- Note Garden Produce Entry Rules 2, 13 & 14.
- One representative from each community garden shall be responsible for the entry fee and forms. To qualify a minimum of 5 individuals must participate from each garden. A 5" x 7" card must be displayed with the names and addresses of all participants. Additional set up help is permitted.
- Vegetables and/or fruit used in the display must be grown by the participants at the community garden site.
- The display must consist of a minimum of 60% produce. Accessories and decorations can be used to carry out the theme.
- All produce must be correctly labeled for educational purposes.
- The display must fill the assigned space in the Building. A sign, must be placed in the display with the name and address of the community garden. No other advertising signs or materials are permitted.
- The following scale of points will serve as a guide for the judge(s) of the Department.

• General Appearance	15 points
• Arrangement of Materials	15
• Accessories/Decorations	10
• Labeling	10
• General Conditions and Appearance of Produce	40
• Completeness of Exhibit	10

TOTAL

100 points

Note: Any entry rule above broken could lead to deduction of points at the judges discretion.

GARDEN & PRODUCE (continued)

HOME GARDEN VEGETABLE AND/OR FRUIT DISPLAY*

1st	2nd	3rd	4th
\$150.00	100.00	75.00	50.00
Rosette	Rosette	Rosette	Rosette

Class

2. One Educational Display of Fruits and/or Vegetables by a Non-Commercial Grower

ENTRY RULES

- A. Produce to be grown and arranged by the person whose name appears on the entry form. Additional set-up help is permitted.
- B. Display designed to accommodate the risers and background area in the Building.
- C. Fruits and/or vegetables correctly labeled as to variety.
- D. No advertising signs are permitted in the display.
- E. Note Entry Rules 2, 8, 12 and 13.
- F. Fruits and/or vegetables must make up a minimum of 50% of the display. Accessories and decorations to carry out the theme are permitted.
- G. The judge(s) will be guided by the following scale.

• General Appearance	20 points
• Arrangement	20
• Accessory Decoration	10
• Labeling	10
• Nomenclature	5
• Quality of Produce	20
• Completeness of Exhibit	10
• Education	5

TOTAL **100 points**

1st	2nd	3rd	4th
\$150.00	100.00	75.00	50.00
Rosette	Rosette	Rosette	Rosette

Class

3. One Educational Display of FRESH and DRIED HERBS and HERBAL PRODUCTS

ENTRY RULES

- A. All plant materials to be grown, made and arranged by the person whose name appears on the entry form.
- B. Display designed to accommodate the risers and background area in the Building.
- C. Display requires a minimum of 50% culinary herbs and culinary herbal products.
- D. All items must be correctly labeled.
- E. No advertising signs permitted in the display.
- F. Note Garden Produce Entry Rules 2, 8, 12, 13 & 14.
- G. The judge(s) will be guided by the following scale.

• General Appearance	20 points
• Arrangement	20
• Accessory Decoration	10
• Labeling	10
• Nomenclature	5
• Quality of Materials	15
• Completeness of Exhibit	10
• Education	5
• Herb Products	5

TOTAL **100 points**

GARDEN & PRODUCE (continued)

HOME CANNING SECTION 200

ENTRY RULES

All canned products including jams, jellies, conserves, preserves, fruits, syrups, pickles, relishes, meats, and sauces must be accompanied with a statement specifying the method and processing time. Examples: "20 minutes in boiling water bath," "30 minutes in pressure canner at 10 pounds pressure."

- A. Clear, standard size, approved jars must be used.
- B. Add correct head space.
- C. Canning must be done within 12 months of the Fair.
- D. Multiple entries permitted in each class - Limit of one variety per class.
- E. Exhibit must be labeled with contents in recipe.
- F. Judge(s) reserve the right to open any and all entries.
- G. For pick up times see Entry Rule #8.
- H. See Entry Rule #9.

JUDGES SCALE PRESERVED FOODS

Jellies, Jams, Preserves, Conserves and Marmalades

- Pack/Container 20 points
- Color 25
- Clarity/Clearness 20
- Consistency/Texture 25
- Flavor/Aroma 10

TOTAL **100 points**

Canned Fruits, Vegetables and Meats

- Pack/Container 20 points
- Color 20
- Uniform Size, Shape 20
- Clear, Bright Liquid 20
- Consistency/Texture 10
- Flavor/Aroma 10

TOTAL **100 points**

Flavored Syrups, Juices

- Pack/Container 20 points
- Color 15
- Clarity 20
- Viscosity/Consistency 25
- Flavor/Aroma 20

TOTAL **100 points**

Pickles, Relish, Sauerkraut, Chutney, ChowChow

- Pack/Container 20 points
- Color 10
- Texture 20
- Liquid 20
- Size/Shape 20
- Flavor/Aroma 10

TOTAL **100 points**

Sauces/Salsa, Fruit or Vegetable

- Pack/Container 20 points
- Color 25
- Consistency/Texture 40
- Flavor/Aroma 15

TOTAL **100 points**

HOME CANNING (continued)

Vinegars

- Pack/Container 20 points
- Color 25
- Quality of Added Items 15
- Liquid Clear & Bright 30
- Flavor/Aroma 10

TOTAL 100 points

Butters

- Pack/Container 20 points
- Color 30
- Consistency/Texture 35
- Flavor/Aroma 15

TOTAL 100 points

Section 200 Best in Show, First, Second and Third Receives A \$25 Giant Eagle Gift Card.

Premiums: 1st - \$3.00; 2nd - \$2.00; 3rd - \$1.00

Class

1. Jams
2. Jellies
3. Preserves, Conserves, Marmalades, Juices
4. Fruits
5. Syrups
6. Vegetables
7. Pickles, dill
8. Pickles, sweet
9. Pickles, vegetable
10. Pickles, fruit
11. Relish
12. Meats
13. Vinegar, homemade or flavored - clear bottle
14. Sauces, Fruit (ex. apple)
15. Sauces, Vegetable (ex. barbecue)
16. Salsa
17. Butter (ex. apple, peach)
18. Mustards
19. Juices
20. Any other

OPEN CLASS - ALL AGES

FRUIT SECTION 300

First and second show trophies will be awarded to the BEST OF SHOW for a single specimen of fruit selected from all entries. The winner will be selected by the judge(s) of the Department. ***Please note Entry Rules 2, 8 & 16.

APPLES*

Single Plate with 5 specimens

Premiums: 1st - \$4.00; 2nd - \$3.00; 3rd - \$2.00; 4th - \$1.00

Class

- | | |
|----------------------|-----------------------------|
| 1. Cortland | 9. McIntosh |
| 2. Delicious, Golden | 10. Mutsu |
| 3. Delicious, Red | 11. Northern Spy |
| 4. Granny Smith | 12. Rome Beauty |
| 5. Jonagold | 13. Ruby |
| 6. Jonathon | 14. Stayman Winesap |
| 7. Lodi | 15. Any other named variety |
| 8. McIntosh, Early | |

HOME CANNING (continued)

CRAB APPLES*

Single Plate with 10 specimens

Premiums: 1st - \$3.00; 2nd - \$1.50; 3rd - \$1.00

Class

16. Any named variety

PEARS*

Single Plate with 5 specimens

Premiums: 1st - \$4.00; 2nd - \$2.50; 3rd - \$2.00; 4th - \$1.00

Class

17. Bartlett
18. Bosc
19. Any other named variety

NUTS

Single Plate with 10 specimens. One cut in half to expose the meat of the nut.

Premiums: 1st - \$4.00; 2nd - \$3.00; 3rd - \$2.00

ENTRY RULES

- A. Please note Entry Rules 2 & 8.
- B. Nuts must be harvested within 12 months of the fair.
- C. One show only.

Class

20. Black Walnuts
21. Carpathian Walnuts (English)
22. Chestnuts
23. Filberts (Hazelnuts)
24. Butternuts
25. Any other named variety

PEACHES*

Single Plate with 5 specimens

Premiums: 1st - \$4.00; 2nd - \$3.00; 3rd - \$2.00

Class

26. Red-Haven
27. Any other named variety

GRAPES*

Single Plate with 3 bunches

Premiums: 1st - \$3.00; 2nd - \$2.00; 3rd - \$1.00

Class

- | | |
|-------------|-----------------------------|
| 28. Catawba | 31. Seedless varieties |
| 29. Concord | 32. Any other named variety |
| 30. Niagara | |

PLUMS*

Single Plate with 5 specimens

Premiums: 1st - \$3.00; 2nd - \$2.00; 3rd - \$1.00

Class

- | | |
|-------------------|-----------------------------|
| 33. Green Gage | 35. Stanley |
| 34. Italian Prune | 36. Any other named variety |

BERRIES*

Premiums: 1st - \$4.00; 2nd - \$3.00; 3rd - \$2.00

Class

37. Blueberries, pint box
38. Raspberries, Red or Black, pint box
39. Blackberries, pint box
40. Strawberries, pint box
41. Any other variety of berry, pint box

APRICOTS & NECTARINES*

Premiums: 1st - \$4.00; 2nd - \$2.50; 3rd - \$2.00

Class

42. Any variety apricot, 5 specimens
43. Any variety nectarine, 5 specimens

HOME CANNING (continued)

MELONS*

Premiums: 1st - \$4.00; 2nd - \$2.50; 3rd - \$2.00

Class

44. Melon, Water - 1 specimen, refrigerator type.
45. Melon, Musk - 1 specimen - netted
46. Melon, Musk - 1 specimen - semi-netted
47. Melon, Musk - 1 specimen - smooth

MIXED FRUIT BASKET*

Premiums: 1st - \$8.00; 2nd - \$5.00; 3rd - \$3.00; 4th - \$2.00

Class

48. Mixed Fruit Basket
 - A. Please note Entry Rules 2 and 16
 - B. 5 or more different varieties of local grown FRESH fruit
 - C. First, second, third and fourth will receive a Rosette. Basket size not to exceed 2 ft. in length, width or height.

OPEN CLASS - ALL AGES

VEGETABLES SECTION 400

A trophy will be awarded to the BEST OF SHOW for a single entry in the FIRST and SECOND SHOW. The winner will be selected by the judge(s) of the Department.

Note Garden Produce Entry Rules 2, 8 & 16.

Premiums: 1st - \$3.00; 2nd - \$2.00; 3rd - \$1.00

Class

1. Beans, Pole - 10 pods: all stems trimmed evenly
2. Beans, Green Snap - 10 pods: all stems trimmed evenly
3. Beans, Yellow Snap - 10 pods: all stems trimmed evenly
4. Beans, Lima - 10 pods: all stems trimmed evenly
5. Beets - 3 specimens, leaves removed to 2"
6. Broccoli - 1 specimen
7. Cabbage, Early - 1 head, only 1 row of open leaves left on
8. Cabbage, Late - 1 head, only 1 row of open leaves left on
9. Cabbage, Red - 1 head, only 1 row of open leaves left on
10. Carrots - 5 specimens, leaves removed to 2"
11. Cauliflower - 1 specimen
12. Celery, Green - 3 branches displayed in water
13. Corn, Bi-Colored - 3 ears with husks on and a one inch strip pulled down, trimmed butts
14. Corn, Popping - 3 ears with husks on and a one inch strip pulled down, trimmed butts
15. Corn, Indian - 3 ears with husks on and a one inch strip pulled down, trimmed butts
16. Corn, Sweet White - 3 ears with husks on and a one inch strip pulled down, trimmed butts
17. Corn, Sweet Yellow - 3 ears with husks on and a one inch strip pulled down, trimmed butts
18. Cucumber, Slicing - 2 specimens
19. Cucumber, English Seedless type - 2 specimens
20. Cucumber, Pickling - 3 specimens
21. Eggplant - 2 specimens
22. Garlic, 3 specimens with one inch stem - Hard neck
23. Garlic, 3 specimens w/ 1" stem - Soft neck
24. Kohlrabi - 3 specimens, with 1" of stem intact
25. Okra - 7 specimens
26. Onion, White - 3 specimens, trimmed
27. Onion, Red - 3 specimens, trimmed
28. Onion, Yellow - 3 specimens, trimmed
29. Parsnip - 3 specimens, leaves trimmed to 2"
30. Pepper, Green Sweet - 3 specimens
31. Pepper, Red Sweet - 3 specimens

32. Pepper, Yellow Sweet - 3 specimens
33. Pepper, Sweet, Any Other - 3 specimens
34. Pepper, Red Hot - 5 specimens
35. Pepper, Yellow Hot - 5 specimens
36. Pepper, Green Hot - 5 specimens
37. Pepper, Hot, Any Other - 5 specimens
38. Pepper, Red Pimento - 5 specimens
39. Potato, Red - 4 specimens
40. Potato, White - 4 specimens
41. Potato, Any Variety - 4 specimens
42. Pumpkin, Pie - 1 specimen with stem
43. Pumpkin, Field - 1 specimen with stem
44. Radish, Red - 5 specimens, leaves trimmed to 1"
45. Radish, White - 5 specimens, leaves trimmed to 1"
46. Rhubarb - 5 stalks, leaves removed
47. Rutabaga - 3 specimens - 2 leaves removed
48. Squash, Acorn - 2 specimens
49. Squash, Buttercup - 2 specimens
50. Squash, Butternut - 2 specimens
51. Squash, Hubbard - 1 specimen
52. Squash, Summer Straight - 2 specimens
53. Squash, Summer Crookneck - 2 specimens
54. Squash, Scallop - 2 specimens
55. Squash, Zucchini, large cooking - 2 specimens
56. Squash, Zucchini, yellow, white or green - 3 specimens, small for eating 5" to 7" long
57. Swiss Chard - 3 stalks, displayed in water

TOMATO EXHIBITS SHOULD BE 60% OR MORE RIPE DEPENDING ON SEASON

58. Tomato, Red, small fruited - 10 specimens
59. Tomato, Yellow, small fruited - 10 specimens
60. Tomato, Pink - 5 specimens
61. Tomato, Red, canning - 5 specimens
62. Tomato, Red, paste - 5 specimens
63. Tomato, Red, slicing - 5 specimens
64. Tomato, Yellow - 5 specimens
65. Turnip - 3 specimens, leaves trimmed to 2"
66. Vegetable, any other 3 specimens must be named (not listed in the book)
67. Tomato, any other - 5 specimens of the same kind

BASKET DISPLAYS*

ENTRY RULES

- A. No more than 3 specimens of the same variety (exception - gourds)
- B. Note Garden Produce Entry Rules 2, 8 & 16. Rosettes awarded for all places.
- C. Class 71 and 72 shall not exceed 2 ft. in length, width or height.
- D. Class 73 shall not exceed 3 ft. in length, width or height

Class

	1st	2nd	3rd
71. Best display of mixed vegetables* 7 or more FRESH specimens in basket	\$10.00	7.00	5.00
72. Best display of squash 5 or more in basket	\$5.00	3.00	2.00
73. Best display of gourds 10 or more in basket	\$5.00	3.00	2.00

EDIBLE BOUQUETS*

Rosettes awarded for all places.

ENTRY RULES

- A. Bouquets must consist of at least three different vegetables or fruits.
- B. Garden Produce Entry Rules 2, 8 & 16.
- C. Flowers may be included.

VEGETABLES (continued)

CLASS		1st	2nd	3rd
74.	Fruit Bouquet	\$10.00	\$7.00	\$5.00
75.	Vegetable Bouquet	\$10.00	\$7.00	\$5.00
76.	Fruit/Vegetable Combo	\$10.00	\$7.00	\$5.00

ENTRY RULES

- A. Note Garden Produce Entry Rules 2, 8, 12, 13 & 14.
Rosettes awarded to first place winners.

Premiums: 1st - \$5.00; 2nd - \$3.00; 3rd - \$2.00

Class

- Largest pumpkin - by circumference
- Largest tomato - by weight
- Longest zucchini squash - by length
- Largest zucchini squash - by weight
- Largest sunflower head - by diameter
- Most unusual vegetable
- Melon, water largest by weight
- Melon, musk - any type - largest by weight
- Largest garlic - by weight
- Largest cabbage - by weight (no roots)
- Tallest Corn Stalk
- Largest Cucuzzi Squash (Italian)
- Longest Cucuzzi Squash (Italian)
- Tallest Sunflower
- Tallest Weed
- Ugliest Weed
- Any other Squash
- Most Unusual Gourd

COMIC CARICATURE*

Premiums: 1st - \$6.00; 2nd - \$4.00; 3rd - \$3.00; 4th - \$1.00

ENTRY RULES

- Made of firm EDIBLE vegetables/fruits. No soft, leafy foliage or DRIED PRODUCE permitted.
- No open or cut produce is permitted.
- Accessories or decorations used must be of natural origin.
- Produce need NOT BE GROWN by exhibitor.
- Size of entry not to exceed 18" across.
- Entry to be judged on creativity, uniqueness and appropriate use of materials.

Class

- One fruit and/or vegetable caricature*

SEED PICTURE OR MOSAIC

Premiums: 1st - \$10.00; 2nd - \$7.00; 3rd - \$3.00; 4th - \$1.00

ENTRY RULES

- One seed picture or mosaic per entrant.
- Picture or mosaic not to exceed 18" x 24" in size.
- Must be made of 75% natural material.
- One show only.
- Must be made by entrant.

Class

- Seed picture or mosaic



EARLY BIRD ENTRY FEE \$10
Postmarked by July 12, 2026

LAST DAY FOR ALL ENTRIES
July 24, 2026

"SCARECROWS"

SECTION 600

ENTRY RULES

- No taller than 6'.
- Must stand alone or be on wooden stake.
- No wider than 6'.
- No LIVE material.
- Theme: Summertime Fun
- Commercially made scarecrows are prohibited.
- Scarecrows must be assembled by the exhibitor, but they may have help.

Premiums: 1st - \$7.00 & Rosette; 2nd - \$5.00 & Rosette;
3rd - \$3.00 & Rosette; 4th - \$2.00; 5th - \$1.00

Class

- Scarecrows

GARDEN GROWING WHEELBARROW

SECTION 700

ENTRY RULES

- Growing area: Maximum 4'x4'.
- Plants need to be established.
- Minimum of 3 different fruit/vegetable/herb plants. (May contain flowers but do not count as the 3 plants required).

Premiums: 1st - \$7.00; 2nd - \$5.00; 3rd - \$3.00; 4th - \$1.00

Class

- Garden Growing Wheelbarrow

SENIOR CITIZEN GARDENER

SECTION 800

Open to exhibitors 65 years or older

A trophy and rosette will be awarded to best of show for a single entry selected by the judge(s) for each show.

ENTRY RULES

- Entrants MUST be 65 years of age or older at time of entry.
- All items exhibited MUST be cared for and/or grown by the exhibitor.
- No first show trophy, rosette, or blue ribbon winning entry is eligible for entry in second show.
- For pick up times see Entry Rule #8.

VEGETABLE SPECIMENS*

Premiums: 1st - \$3.00; 2nd - \$2.00; 3rd - \$1.00

Class

- Beans, any variety - 8 pods
- Beets - 2 specimens, leaves removed to 2"
- Cabbage - 1 specimen, open leaves left on
- Cucumbers - 2 specimens
- Garlic - 3 specimens with 1" stem
- Onion, any variety - 3 specimen with 1" stem
- Pepper, any variety - 2 specimens
- Potato - 3 specimens
- Pumpkins - 1 specimen with stem
- Sweet corn - 3 ears with husks on and 1 inch strip pulled down
- Squash, zucchini - 1 specimen
- Tomato, any variety - 3 specimens
- Tomato, cherry - 10 specimens
- Vegetable, any other - 3 specimens (3 of the same kind)
- Vegetable basket - 5 or more different FRESH specimens. Basket size: Length, width or height not to exceed 2 ft.

APIARY, BEES & HONEY

DEPARTMENT 27

DISPLAYED IN BUILDING 30

DENNIS ECK

Director-At-Large for Apiary, Draft Horses & Ponies, Horse
Barns, Beer & Wine Sales

Contact Info: denscritters@yahoo.com

Overall Best of Show

Trophy and \$25.00 to be sponsored by Queen Right Colonies

Trophy for Classes 202, 203 & 204

Sponsored by Queen Right Colonies

THEME: SECRET GARDEN

IMPORTANT DATES FOR BEES AND HONEY DEPT 27 ONLY

Sat. before Fair | ENTRY SET-UP • Noon to 4:00pm

Sun. before Fair | ENTRY SET-UP • 9:00am - 12:00pm

Sun. of Fair | ENTRY PICK-UP (exhibitor tag required) •
8:30pm - 10:00pm

ENTRY RULES

1. Only one entry will be permitted by an exhibitor for any one premium and no two exhibits in the same class shall be made by the same person or any member of his/her family from the same apiaries, or apiary.
2. Honey judged on quality, cleanliness, color, aroma and moisture content.
3. Bees and Queen judged for evenness in color and form, general appearance and educational value to the public. Queen and her bees shown on a frame of brood in observation hive.
4. Sweetening used in baked goods and canned fruit must contain 50% honey. Recipe must be attached. Bring entry in zip-lock bag on disposable plate.
5. Sweetening used in Honey Candy must contain a minimum of one-sixth honey. Candy and baked goods must be displayed in plastic bags or well-covered with clean film.
6. Honey and honey products must be produced by the exhibitor within the past year - from fair year to fair year.
7. The judge(s) may award a lower class prize or no prize for entries that are substandard.
8. Honey may be purchased for products in Section 300.
9. Set up Saturday, Noon - 4:00 P.M. or Sunday 9:00 A.M. - Noon.
10. All exhibits/entries can be picked up on Sunday, the last day of the Fair, from 8:30 P.M. - 10:00 P.M. Exhibitor Tag required for pickup. Any exhibits not claimed will be disposed of at the discretion of the Director-At-Large or the Superintendent. Award ribbons not claimed will be available at the Fair Office the week following the Fair.

BEE & HONEY DISPLAY SECTION 100

RULES

1. Space is limited and the number of displays may be capped if the number of entries exceeds the display space available.

1st	2nd	3rd	4th
\$100.00	75.00	50.00	25.00
Rosette	Rosette	Rosette	Rosette

CLASS

101. Individual booth display educational and/or advertising using modern equipment and/or techniques.
102. Individual booth display demonstrating antique beekeeping practices using antique equipment, etc.
103. Individual booth display for scholarship winner using educational, advertising and equipment etc. Rosette Only

To be judged as follows:

Educational and/or Advertising Value	35 points
Attractiveness and Arrangement	25
Quality of Product	25
Completeness of Display	15

TOTAL 100 points

BEE & HONEY DISPLAY SECTION 200

A trophy will be awarded to Best of Show for a single specimen in Section 200 & 300.

The winner will be selected by the judge(s) of the Divisions.

Honey will be judged according to the PFUND scale used in the honey industry using a jacks scale.

Class

	1st	2nd	3rd	4th
201. Observation hive - honey bees and queen	\$35.00	25.00	15.00	10.00
202. Extracted honey - water white to white, 3 lbs. in 1 lb. glass honey jars, PFUND of 0-34mm	\$6.00	4.00	3.00	2.00
203. Extracted honey, extra light to light amber, 3 lbs. in 1 lb. glass honey jars, PFUND of 35-85mm	\$6.00	4.00	3.00	2.00
204. Extracted honey, amber to dark, 3lbs. in 1 lb. glass honey jars, PFUND of 86-114mm	\$6.00	4.00	3.00	2.00
205. Creamed honey Plain or Flavored - Minimum 18 oz. up to 3 lb. - in 6 oz or 1 lb wide mouth uniform jar with uniform lid	\$6.00	4.00	3.00	2.00
206. Chunk honey - 1/2 cut comb minimum, 3 lbs. in 1 lb. uniform round wide mouthed glass honey jar with uniform lid	\$6.00	4.00	3.00	2.00
207. Extracting frames - deep, 2 frames (Bee-proof container)	\$8.00	7.00	5.00	4.00
208. Extracting frames - shallow or medium, 7 1/4" or less, 2 frames (Bee-proof container)	\$8.00	7.00	5.00	4.00

ENTRIES IN CLASS 201, 207, 208 MUST BE DISPLAYED IN BEE-PROOF CASES WITH SIDES MADE OF TRANSPARENT MATERIALS, GLASS OR PLASTIC. Frames must be removable to be judged.

DEPT 25

DEPT 27

BEES & HONEY (continued)

Class		1st	2nd	3rd
209.	Cut comb honey - 4 containers, Ross Rounds in plastic containers	\$5.00	3.00	2.00
210.	Comb honey - round sections, \$ 4 sections, 8 oz. or more per section in transparent plastic containers	5.00	3.00	2.00
211.	Beeswax- 1 piece, 8 oz. minimum	\$5.00	3.00	2.00
212.	Specimen other than above	\$5.00	3.00	2.00

BEE & HONEY DISPLAY SECTION 300

301.	Honey candy - 5 pieces, <i>recipe attached</i>	\$5.00	3.00	2.00
302.	Honey cookies - 6 cookies, <i>recipe attached</i>	\$5.00	3.00	2.00
303.	Honey loaf cake - loaf or 1 layer, <i>light or dark, not frosted, recipe attached</i>	\$5.00	3.00	2.00
304.	Honey yeast bread - 1 loaf, <i>recipe attached</i>	\$5.00	3.00	2.00
305.	Honey bread - non-yeast, 1 loaf, <i>recipe attached</i>	\$5.00	3.00	2.00
306.	Honey/Mead <i>in clear bottle 4/5 quart or 26 ounces, straight sided bottle; will be opened and tasted</i>	\$5.00	3.00	2.00
307.	Novelty honey cooking - <i>quantity of product exhibited sufficient for a comparison, may include jellies (50% honey), granola, fruit leathers, etc. Recipe attached</i>	\$5.00	3.00	2.00
308.	Fruit canned with honey - 3 jars, <i>all pints or quarts, recipe attached</i>	\$5.00	3.00	2.00
309.	Specimen other than above	\$5.00	3.00	2.00

BEE & HONEY DISPLAY SECTION 400

400.	Honey gift package - total package weight 8 lbs. or less. <i>Must be honey bee related product with the exception of container, honey servers, cookbooks or decorations</i>	\$8.00	6.00	4.00
401.	Hand Cream: 3-1 oz. clear containers - <i>recipe attached, % (percent) of wax - honey - other</i>	\$5.00	3.00	2.00
402.	Soap products - 3 bars <i>1 oz. minimum weight each, handmade - lye - based, 3 uniform bars, recipe attached, % (percent) of wax - honey - other</i>	\$5.00	3.00	2.00
403.	Honey Pot	\$5.00	3.00	2.00
404.	Specimen other than above	\$5.00	3.00	2.00

PHOTOS FEATURING BEES SECTION 500

Photos must be at least 5" x 7" and be matted
Premiums provided by the GCBA

Class		1st	2nd	3rd	4th
501.	Flower with Honey Bee	\$10.00	8.00	5.00	3.00
502.	Honey Bee hive	\$10.00	8.00	5.00	3.00
503.	Honey Bee hive (natural)	\$10.00	8.00	5.00	3.00
504.	Swarm - Honey Bee	\$10.00	8.00	5.00	3.00
505.	All other bee-related photos	\$10.00	8.00	5.00	3.00

BEES & HONEY (continued)

FLORAL DEPARTMENT DEPARTMENT 28

DISPLAYED IN BUILDING 16

TOM SABREY

Director-At-Large for Rabbits, Cavies, Poultry, Floral, Produce, Sheep & Swine
Contact Info: Rabbitman83@aol.com

Superintendent: Matthew Gall

Standard Flower Show is the official title of a flower show conforming to standards established by National Garden Clubs, Inc. National Garden Club's Standard System will be used for all competitive judging and is found in the NGC Flower Shows Handbook 2007 edition. Decisions of the judges will be final. Exhibits may not be altered after the judging. Awards will be withheld if not merited.

The classes in sections 400 - 800 are exhibits in the Standard Flower Show. The Standard Flower Show is open to all exhibitors whether or not they are affiliated with a Garden Club.

FLORAL BUILDING SCHEDULE

Please Note Drop Off Schedule Changes

ROSE SHOW

Exhibits should be brought in the morning of the show starting at 7:30 A.M. Judging will be 10:00 A.M. Thursday.

CONTAINER GROWN PLANTS – Blooming & Foliage

Entries are accepted Saturday and Sunday preceding the Fair from 9:00 A.M.-4:00 P.M. Judging will be Monday at 10:00 A.M.

FAIRY GARDENS

Entries are accepted Saturday and Sunday preceding the Fair from 9:00 A.M. – 4:00 P.M. Judging will be Monday 10:00 A.M.

CUT SPECIMEN BLOOMS – Annuals & Perennials

Entries accepted Tuesday from 7:30 A.M. – 10:00 A.M. Judging Tuesday at 10:30 A.M.

DESIGN ARRANGEMENTS

Entries for the first show accepted Tuesday from 7:30 A.M. – 10:00 A.M. They may be picked up no earlier than Thursday 9:30 P.M. Judging Tuesday at 10:30 A.M. Entries for the second show accepted Thursday from 7:00 P.M. – 10:30 P.M. Judging Friday at 10:30 A.M.

DAHLIA SHOW

- Pre-registration of varieties must be completed by the Friday of Fair Week.
- Exhibitors must purchase their Exhibitors pass prior to the day of the show during regular office hours.
- Judging is on Saturday at 11:00 A.M.

FLORAL DEPARTMENT (continued)

- All exhibits, ribbons, and premiums should be picked up Sunday, the last day of the Fair, between 8:30 P.M. and 10:00 P.M. (at this time the building will be closed to the public) or on Monday after the Fair in the Building 16 between 2:00 P.M. and 7:00 P.M.

ALL JUDGING IN THE FLORAL BUILDING AND DISPLAY GARDENS IS CLOSED TO THE PUBLIC.

FLORAL DEPARTMENT ENTRY RULES

1. To exhibit you must purchase an Exhibitor Ticket which includes 2 complimentary gate admissions. Your one Exhibitor Ticket permits you to exhibit in all other Open Class Divisions or Departments of the Cuyahoga County Fair.
2. See Exhibitor Rules for entry deadline.
3. There are no class Entry Fees in this Department.
4. Eligibility To Exhibit:
 - a. Sections are open to all.
 - b. All cut specimen material must be grown by the Exhibitor.
 - c. Container specimens must be in Exhibitor's possession for three months.
5. Be sure to specify on your Entry Form if you are entering the first, second, or both shows.
6. Make check or money order payable to Cuyahoga County Fair and mail with your Entry Form to:
Cuyahoga County Fair • P.O. Box 135 • Berea, Ohio 44017
Your Exhibitor Ticket will be mailed to you. Your Entry Tags will be held for you at the Floral Building, ready to attach to your exhibit. They will not be distributed ahead of time.
7. The Entry Rules governing the Cuyahoga County Fair apply to this department.
8. In all classes the decision of the judges will be final.
9. When staging Horticultural specimens, the container should be in proportion to the size of the stem. Vase is equal to one third the size of the entry.
10. While the management will give all assistance possible in properly placing exhibits and safe-guarding them during the Fair, it in no way assumes any responsibility in case of loss.
11. All exhibits and ribbons should be picked up Sunday, the last night of the Fair between 8:30 P.M. and 10:00 P.M. or on Monday after the Fair in BUILDING 16 between 2:00 P.M. and 7:00 P.M. Any exhibits, ribbons, and premiums remaining after Monday will be taken to the Fair Board Office and may be picked up the week following the Fair.
12. To insure proper identification, please attach a sticker with your name on it to the bottom of the container.
13. Entry tags must be attached to the exhibit, not laid on the table. Design Classes are the exception to this rule.
14. The Director-At-Large or Superintendent reserves the right to remove any unworthy entries.
15. An exhibitor may enter more than one entry in a HORTICULTURAL CLASS provided it is a different variety.
16. No plant shine is permitted on any of the container grown plants.
17. No accessories are permitted in containers in the Horticultural section except dish gardens.
18. Judges are all Horticultural Specialists or they are Nationally Accredited Judges. All entries are individually judged against horticultural perfection, not against each other.

DEPT 28

FLORAL DEPARTMENT (continued)

19. All exhibits must be kept fresh. Unsightly or wilted plants will be removed. The Director-At-Large or Superintendent may at any time remove an exhibit if deemed necessary.
20. Any horticultural entry entered in class as "other" MUST have the name of the plant written on the entry tag.

SPECIAL AWARDS

The AWARD of HORTICULTURAL EXCELLENCE may be awarded to the exhibit judged as the finest in the entire Horticultural section. This award shall be represented by a rosette of green, orange and blue ribbons. This award, if merited, shall be given for ribbon only, no extra cash award. Sections 400 & 500 only.

The AWARD OF MERIT may be awarded to a blue ribbon winner scoring 95 or over in each of the designated sections. The Award of Merit shall be represented by a rosette of orange. This award, if merited, shall be given for ribbon only and no extra cash award. Entries eligible for this are Sections 400 - 700 only.

GARDEN ART SECTION 100

Premiums: 1st - \$15.00; 2nd - \$10.00; 3rd - \$8.00; 4th - \$5.00

Class

1. Window Box Display

ENTRY RULES

- A. All materials to be grown and arranged by person whose name appears on entry form.
- B. All items to be correctly labeled.
- C. Window box to be up to two (2) feet in length.
- D. No advertising signs permitted on display.

Class

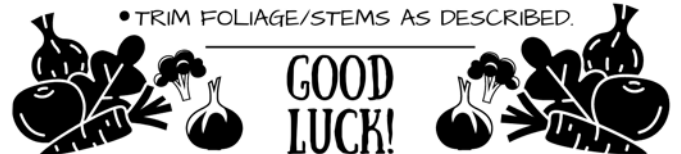
2. Flower Pot caricatures

ENTRY RULES

- A. Theme: Summertime Fun
- B. Made out of a minimum of 3 clay or plastic pots
- C. Must contain live plants
- D. Can be embellished with paint, fabric, accessories, etc.
- E. Must be able to stand or sit unsupported

WINNING TIPS FOR GARDEN PRODUCE

- ENTRY FORM POSTMARKED BY JULY 26TH.
- OBSERVE ENTRY DROP OFF DATE(S).
- MONITOR NUMBER OF SPECIMENS PER ENTRY.
 - COLLECT THE BEST OF THE BEST.
- MAKE SURE SPECIMENS ARE CLEAN & BLEMISH FREE.
 - TRIM FOLIAGE/STEMS AS DESCRIBED.



FLORAL DEPARTMENT (continued)

**TRASH GARDENING
SECTION 200**

The OSU Extension Master Gardeners-Cuyahoga County, Cuyahoga County Farm Bureau and Cuyahoga County Solid Waste District are sponsoring "Trash Gardening" at the Cuyahoga County Fair. This exhibit is open to all individuals, all ages. (no groups or businesses)

ENTRY RULES

1. Entries are to consist of containers constructed for another purpose and now used to grow plants (e.g. pizza pan, lamp base, etc)
2. Container and plant are not to exceed 50 pounds.
3. Creative title must be visible on your entry.
4. Entry judging criteria will be available on the fair's website or at the fair office starting in June.
5. Entries accepted during drop off times for container plants (see page 26).
6. Note floral rules 1, 4, 10.
7. The OSU Extension Master Gardeners-Cuyahoga County, Cuyahoga County Farm Bureau and Cuyahoga County Solid Waste District are sponsoring "Trash Gardening" at the Cuyahoga County Fair.

Prizes are Sponsored by the Cuyahoga County Farm Bureau. A 1st, 2nd and 3rd will be awarded in each category and receive a Rosette.

Premiums: 1st - \$15; 2nd - \$10; 3rd - \$5

Class

Ages 18 years & Older

1. Most Trashy
2. Most Beautiful
3. Most Creative

Ages up to 18 years

4. Most Trashy
5. Most Beautiful
6. Most Creative

To be judged as follows:

Uniqueness of container	20 points
Creativity and originality	20
Arrangement and selection of plants	20
Creative title	10
TOTAL	70 points

**SPECIMEN BLOOMS
SECTION 300**

ROSES • ONE SHOW
A.R.S. Rules

PLANT SOCIETY EXHIBIT
Judging:
10:00 A.M., Thursday, of Fair Week

FLORAL DEPARTMENT (continued)

COURT OF HONOR

1. **QUEEN OF SHOW** (Hybrid Tea)
Award: Rosette and \$5.00
2. **BEST MULTIPLE BLOOM** (Large Roses)
Award: Rosette and \$5.00
3. **QUEEN OF SHOW** (Miniature/Miniflora)
Award: Rosette and \$5.00
4. **BEST MULTIPLE BLOOM** (Miniature/Miniflora)
Award: Rosette and \$5.00

*For information on entering roses call consultant
Jeff Sommer - (216) 476-3068 - jsommore@aol.com*

ENTRY RULES

1. One Show – Forest City Rose Society
2. A.R.S. Rules, Plant Society Exhibit
3. Label all varieties.
4. This section will be set up Thursday of the Fair.
5. Exhibitor must complete entry form.
Enter Dept. 28, Section 300, Class 1 Roses
6. For a complete Rose Show List
Contact the C.C.F. Office at (440) 243-0090

**BLOOMING CONTAINER
GROWN SPECIMEN PLANTS
SECTION 400**

Best of Show Rosette & \$7.50

Entries accepted Saturday & Sunday, preceding the Fair, from 9:00 A.M. - 5:00 P.M. and Monday from 7:30 A.M. to 9:00 A.M.

ONE SHOW ONLY
Judging: 10:00 A.M., Monday
Plants must remain until Sunday,
closing day of the Fair.

ENTRY RULES

1. All plants must have been in exhibitors' possession at least three months. Plants **MUST** be in bloom.
2. Plants must be labeled as to variety. Botanical or common name may be used.
3. All plants must be insect and disease free.
4. There can be one or more plants per pot unless otherwise specified. Clay or plastic pots are preferred over decorative pots.
5. Exhibitor is requested to enter plant in the proper class.
6. Fourth place receives Honorable Mention with ribbon only.
7. All entry requirements of the Cuyahoga County Fair and the Floral Department entry rules apply.
8. Containers must be clean or they will be disqualified.



EARLY BIRD ENTRY FEE \$10
Postmarked by July 12, 2026

LAST DAY FOR ALL ENTRIES
July 24, 2026

DEPT 28

JUDGING SCALE

Saint Paulia (African Violets)

Leaf symmetry	25
Health & Vigor	25
Quantity of Bloom	25
Size & type Bloom	15
Color	10
Total Points	100

Foliage Plants

Cultural perfection	40
Health & Vigor	35
Ornamental value	25
Total Points	100

Other

Flowering Plants	
Overall beauty	40
Health & Vigor	35
Quantity of Bloom	25
Total Points	100

SAINTPAULIA – (AFRICAN VIOLETS) DOUBLE BLOSSOM

Premiums: 1st - \$4.00; 2nd - \$3.00; 3rd - \$2.00; 4th - Honorable Mention Ribbon Only

Class


- 1 Single blooms - solid color
- 2 Double blooms - solid color
- 3 Bicolor and two tones
- 4 Miniature single or double
- 5 Miniature - trailing

OTHER FLOWERING PLANTS

Premiums: 1st - \$4.00; 2nd - \$3.00; 3rd - \$2.00

Class

- 6 Sinningia (Gloxinia)
- 7 Streptocarpus (Cape Primrose)
- 8 Episcia (Flame Violet or Lace Flower)
- 9 Begonia (any variety)
- 10 Hanging Basket with Flowering Houseplants (all one color)
- 11 Hanging Basket with Flowering Houseplants (mixed colors)
- 12 Hanging Basket with Flowering Annuals (all one color)
- 13 Hanging Basket with Flowering Annuals (mixed colors)
- 14 Orchids
- 15 Geraniums
- 16 Woody Plants in Bloom (azalea, gardenia, citrus, etc.)
- 17 Other flowering plants in bloom not listed



Did you know?

We have a Wind Turbine!

Experience the power of the wind through our 262 foot tall, 500 kW wind turbine.

Be sure to visit our 2,000 sq. ft. Sustainability Center during the Fair!

CONTAINER SPECIMEN PLANTS GROWN PRIMARILY FOR FOLIAGE SECTION 500

Best of Show Rosette & \$7.50

Entries accepted Saturday & Sunday, preceding the Fair, from 9:00 A.M. - 4:00 P.M.

ONE SHOW ONLY

Judging: 10:00 A.M., Monday

ENTRY RULES:

Same as Section 400

CONTAINER GROWN IN HANGING BASKETS

Hanging basket must be capable of supporting the full weight.
Premiums: 1st - \$4.00; 2nd - \$3.00; 3rd - \$2.00

Class

1. Hanging baskets/pots with foliage
2. Hanging baskets/pots with vines
3. Hanging baskets/pots with ferns
4. Hanging baskets/pots with Wandering Jew Family
5. Hanging Asparagus densiflorus "Sprengerii"

CONTAINER GROWN **NOT** IN HANGING BASKETS

6. Woody or semi-woody viny or trailing type (English Ivy, Creeping Fig, Wax Plant, etc.)
7. Herbaceous or succulent vine or trailing excluding aroids (Swedish Ivy, Wandering Jew, Rosary Plant, etc.)
8. Aroids – upright types (Chinese Evergreens, Dieffenbachia)
9. Aroid – trailing type (Philodendron, Monstera, Pothos, Nephthytis, etc.)
10. Over 8" Herbaceous plants with variegated foliage (Coleus, Pileas, Maranta, Fittonia, Caladium, etc.)
11. Under 8" Herbaceous
12. Woody or semi-woody plants with variegated foliage (Croton, Draceana, Acalpha, etc.)
13. Echinocactus
14. Opuntia (cactus)
15. Notocactus
16. Schlumbergera - Zygocactus
17. Mammallaria - cactus
18. Cactus - any other
19. Jade Solid color
20. Jade - variegated
21. Jade - miniature leaf
22. Succulent other than Jade
23. Euphorbia
24. Dish Garden - variety of mixed growing plants (non- cactus)
25. Culinary Herb
26. Medicinal Herb
27. Aromatic Herb
28. Any other plant diameter smaller than 8" pot
29. Any other plant diameter 8" – 16" pot
30. Any other plant diameter larger than 16" pot
31. Cactus garden - (mixed cactus plants)
32. Herbaceous plants with variegated foliage (combination 1+ variety in same container)

FLORAL DEPARTMENT (continued)

- Plants grown in unusual container not to exceed 18" pot in diameter
- Herb
- Fruit or Vegetable
- Foliage
- Flowering Plants

CUT SPECIMEN BLOOM - ANNUALS SECTION 600

Court of Honor

Best of Show Rosette & \$7.50

Enter Annuals on Tuesday Only

Entries Accepted Tuesday of Fair from 7:30 A.M. - 10:00 A.M.

ONE SHOW

Judging: 10:30 A.M., Tuesday

ENTRY RULES

- See Entry Requirements and Floral Department Entry Rules.
- This section will be set up for Tuesday.
- All annuals should be named with variety, if possible.
- Floral Department supplies containers. The only exception is Sunflowers. The exhibitor must provide their own container.
- Foliage should not be BELOW WATER LINE, but all stems must include some foliage.
- Inconspicuous wedging is permitted where necessary.

Premiums: 1st - \$3.00; 2nd - \$2.00; 3rd - \$1.00; 4th - Honorable Mention Ribbon Only
***Blooms in this class must be labeled with name

Class

- Ageratum, 3 stems
- Aster, 3 stems, one color or mixed
- Calendula, 3 stems, one color or mixed
- Carnation, 3 stems, one color or mixed
- Celosia, 3 stems
- Cleome, 3 stems
- Cosmos, 3 stems
- Dwarf bedding Dahlias, 3 stems
- Geranium, 3 stems
- Lantana
- Marigold, dwarf French, double, 3 stems
- Marigold, dwarf French, single, 3 stems
- Marigold, large, 3 blooms up to 2 1/2"
- Marigold, large, 3 blooms 2 1/2" or over
- Petunia, double flowered, one variety, 3 stems
- Petunia, grandiflora, one variety, 3 stems
- Petunia, multiflora, plain edged, one color, 3 stems (small flowers)
- Petunia, 3 stems, bi-color any variety
- Petunia, single, 3 stems
- Salvia, 3 stems
- Scabiosa, 3 blooms
- Snapdragons, one variety, 3 spikes
- Sunflower - Yellow, one bloom, 1 container
- Sunflower - Red/Orange, one bloom, 1 container
- Sunflower - other
- Tuberous begonia, 3 blooms, any color

FLORAL DEPARTMENT (continued)

- Tuberous begonia, single, 3 blooms, any color cut SPECIMEN (continued)
- Zinnia, Dahlia flowered, one color, 3 stems
- Zinnia, cactus, one color, 3 stems
- Zinnia, pompom, one color, 3 stems
- Verbena, any color, 3 stems
- Impatiens - 3 stems
- Gladiolus - 1 stem
- Dahlia
- Herb - Annual (basil, cilantro, dill, parsley))
- Any other annual not mentioned, 3 stems

CUT SPECIMEN BLOOM - PERENNIALS SECTION 700

Court of Honor

Best of Show Rosette & \$7.50

Enter Perennials - Tuesday Only

Entries Accepted Tuesday from 7:30 A.M. - 10:00 A.M.

ONE SHOW

Judging: 10:30 A.M., Tuesday

ENTRY RULES

- Label all varieties.
- This Section will be set up for Tuesday.
- See Entry Requirements and Floral Department Entry Rules.
- Foliage should NOT be below water line.
- Inconspicuous wedging is permitted where necessary.

Premiums: 1st - \$3.00; 2nd - \$2.00; 3rd - \$1.00; 4th - Honorable Mention Ribbon Only
***Blooms in this class must be labeled with name

Class

- Chrysanthemums, 3 stems
- Delphinium, 3 stems
- Heliopsis, 3 stems
- Liatris, 3 stems
- Monarda, 3 stems
- Phlox, 3 spikes
- Rudbeckia, 3 stems
- Shasta Daisy, 3 stems
- Tritoma, 3 stems
- Hybrid Lilies, 3 stems
- Hemerocallis - Daylilies, 3 stems
- Gallardia, 3 stems
- Echinacea - Coneflower, 3 stems
- Wildflower
- Hosta (solid, any variety) leaf under 5"
- Hosta (solid, any variety) leaf over 5"
- Hosta (variegated, any variety) leaf under 5"
- Hosta (variegated, any variety) leaf over 5"
- Hydrangea
- Hibiscus
- Herb - Perennial (sage, chives, mint, thyme, etc.)
- Coreopsis
- Any other perennial not listed above, 3 stems

**DESIGN ARRANGEMENTS
SECTION 800**

**TWO SHOWS
STANDARD DIVISION**

**Material exhibited to show arrangement of
Flowers, Foliage and Container**

ENTRIES ACCEPTED:

**FIRST SHOW: Monday 7:00 P.M. – 10:30 P.M.
or Tuesday 9:00 A.M. – 10:00 A.M.**

SECOND SHOW: Thursday 7:00 P.M. – 10:30 P.M.

ENTRY RULES

1. Entry tags must be placed with the exhibit. They need not be attached.
2. No one will be permitted more than one entry per class.
3. Materials need not be grown by the exhibitor.
4. No artificial flowers, foliage, vegetables, or fruit permitted. No cut fruits or vegetables permitted.
5. Accessories are permitted in all classes with the EXCEPTION of the American Flag or any other National Flag. Since proper Flag etiquette is difficult to determine in design.
6. Honorable Mention for 4th ribbon.
7. Repeating the same arrangement in 2nd show will automatically disqualify exhibitor.
8. Novice classes are for participants who have not won a blue rosette in a previous flower show.
9. Novice Classes are Show 1 – Class 2 + 5 and Show 2 – Class 4 + 6.
10. All entries are to be artistic arrangements as known to flower arrangers, that is, an interpretation of the theme; it should not be a scene.
11. This schedule is meant to bring out exhibits that are suggestive of the titles in each class.
12. Design is limited to 24" wide. There is no height limit, but design must be in proportion.
13. The use of any part of plants on the state conservation list is strictly prohibited and the arrangement will be disqualified.
14. All entries must be kept in good show condition or they will be removed by the Director-At-Large.
15. Entries from the First show should be picked up after 8:00 P.M. Thursday evening or Friday before 10:00 A.M.
16. See CCF Entry Requirements and Floral Department Entry Rules.

The judging criteria will be based on the following: Color combination, Proportion and balance, Creative expression, Distinction and originality, Suitability of material in relation to containers, Design in all elements and principles, and interpretation of the theme.

ALL CLASSES

1st prize- \$5.00, 2nd prize- \$4.00, 3rd prize-\$3.00,
4th prize- Honorable Mention - Ribbon Only

BEST ARRANGEMENT - EACH SHOW

1st - \$7.50 & Rosette, 2nd- \$5.00 & Rosette, 3rd- \$2.50 & Rosette

Judging for both shows will begin at 10:30.

DESIGN ARRANGEMENTS

Theme: Summertime Fun

- Class 1 Florida Fun**
Show 1- The Beach
Show 2- Orlando
- Class 2 Lake Erie**
Show 1- Boating
Show 2- Fishing
- Class 3 Baseball**
Show 1.Guardians
Show 2.Vintage Indians
- Class 5 Summer**
Show 1- Swimming
Show 2- Gardening
- Class 6 Vacation**
Show 1- Roadtrip
Show 2- Airplane
- Class 7 The Fair**
Show 1- Cuyahoga County Fair
Show 2- Ohio State Fair

**All dried materials to be natural. Minimum of artificial color permitted.*

**FAIRY GARDENS
SECTION 900**

JUDGING: 10:00 A.M., MONDAY

Entries are accepted Saturday and Sunday preceding the Fair from 9:00 A.M. to 4:00 P.M.

ENTRY RULES

1. Plants to be in proportion to container.
2. Container no larger than 24" in diameter.
3. Fairy novelties optional.
4. All plants must be alive.

Judging will be based on the following:

- Creativity & originality
- Uniqueness of container
- Scale of plants

1st prize- \$10.00, 2nd prize- \$8.00, 3rd prize- \$6.00, 4th prize - \$4.00, 5th prize - \$2.00

Class

1. Fairy Garden: made by an adult
2. Fairy Garden: up to 18 years of age

DAHLIA DISPLAY DEPARTMENT 281

DAHLIA PLANT SOCIETY EXHIBIT CLASS 110

**Dahlia Society of Ohio
Cuyahoga County Fair Dahlia Show**
Judging: 11:00 A.M., Saturday

ENTRY RULES

1. See Entry Requirements and Floral Department Entry Rules.
2. All Entries shall be judged in accordance to the Official Joint American Dahlia Society and Central States Dahlia Society Classifications.
3. More than one entry in a class IS allowed.
4. Pre-registration of varieties must be completed by the Friday of Fair Week.
5. Containers and entry tags will be furnished at the show.
6. Court of Honor winners will be picked from Classes 1 through 76 except Grand Champion and Reserve Champion which will be chosen from the Court of Honor.
7. The Grand Champion and the Reserve Champion will each receive a trophy in addition to the Premium money and Rosette.
8. Exhibitors must complete Entry Form.
Enter Dept. 281, Class 110, Lot 1 Dahlias

JUNIOR FAIR DEPARTMENT 37

DISPLAYED IN BUILDING 38
THEME: "Rise and Shine, It's Fair Time"

HOLLY EVERHART

Director-At-Large for Junior Fair, 4H, Canine & Sponsorships
Contact Info: CCFJrFair@yahoo.com

Elizabeth Kalanish & Alison Ungar
Superintendents

PARTICIPATING ORGANIZATIONS

- OSU Extension 4-H
- DeMolay
- Boy Scouts
- FFA
- Girl Scouts
- International Order of Rainbows for Girls
- See Cadets

IMPORTANT DATES FOR JUNIOR FAIR DEPT 37 ONLY

Friday, July 17 | **AMBASSADOR APPLICATIONS DUE
BY MIDNIGHT**

Friday, July 24 | **ENTRY FORMS DUE BY 5PM**

Friday, August 7 | **ENTRIES (EXCEPT CULINARY) ACCEPTED IN
JUNIOR FAIR BLDG. --- 12:00 P.M. to 6:00 P.M**

Saturday, August 8 | **ENTRIES ACCEPTED (EXCEPT CULINARY)
IN JUNIOR FAIR BUILDING • 10:00 A.M. to 4:00 P.M**

Sunday, August 9 | **CULINARY ENTRIES ONLY ACCEPTED
9:30 A.M. to 11:30 A.M.**

**NO ENTRIES ACCEPTED AFTER 5:00 P.M. FRIDAY
EXCEPTION: CULINARY ENTRIES
ACCEPTED ON SUNDAY**

Sunday, August 9 | **JUDGING OF OPEN CLASS ENTRIES -
CLOSED TO PUBLIC**

Sunday, August 9 | **ENTRIES MAY BE PICKED UP
FROM 8:30 P.M. TO 10:00 P.M.**

Monday, August 10 | **ALL ENTRIES MUST BE PICKED UP BETWEEN
10:00 A.M. TO 2:30 P.M.**

JUNIOR FAIR SPECIAL EVENTS

There are many special activities and contests for children, pre-teens and teens going on throughout the Fair. Unless otherwise noted all contests will be held in or around the Junior Fair Building. They are open to all youth, with age divisions noted under each section. See the section where the activity is listed for registration details. There is a minimum of three participants in each division or contest. Junior Fair officials have the right to alter, add or cancel any event in the interest of the Junior Fair Department and Cuyahoga County Agricultural Society.

Look for details on these exciting events during fair week.

RECYCLE CRAFT SCRAMBLE

BUILDING BLOCK CONTEST
Tuesday, 6:00pm to 8:00pm

*** FOR PREMIUM ADMISSION TICKETS***
Must have a VALID email address.
Admission ticket will be sent to this
address. NO tickets are available via
regular mail or pickup at the office.

JUNIOR FAIR (continued)

JUNIOR FAIR DANCE (FOR ACTIVE JR FAIR MEMBERS ONLY)

Friday, 9:00 P.M. to 11:00 P.M.

DAILY ACTIVITIES AND GAMES

See www.cuyfair.com for most current lists

GAMES

All Held in Jr. Fair Building (#38) unless otherwise specified.
Sign ups begin at noon the day of the contest and end 15 minutes before the start of the contest.

Age Categories: 5-8, 9-12, 13-18, 19+

Pickle Eating Contest: Tuesday 4:00 P.M.

Pie Eating Contest: Wednesday 2:00 P.M.

Pancakes Eating Contest: Wednesday 7:00 P.M.

Watermelon Eating Contest: Thursday 4:00 P.M.

JUNIOR FAIR MEMBERS ONLY:

Jr. Fair Rodeo Contest: Thursday 7:00 P.M. Cow Palace Arena
Junior Fair Committee reserves the right to change contests as necessary.

GENERAL RULES and REQUIREMENTS FOR JUNIOR FAIR DEPARTMENT

Please observe all General Rules and Requirements for exhibits as found in the front of this book with the exception and addition of the following.

1. Only one entry per class unless noted otherwise.
2. There are NO ENTRY FEES in the Junior Fair Department #37. No gate passes are included.
3. Junior Fair participants must be 19 years of age or younger as of January 1 of the current year except where noted.
4. All entries must be made using the Junior Fair Entry Form or facsimile of the individual cut-out entry forms found in this section of the premium book. Additional books and forms are available at: www.cuyfair.com
Cuyahoga County Fair • 164 Eastland Rd. • Berea, Ohio 44017
5. The forms can be photocopied. A separate entry blank must be used by each exhibitor. Entry forms must be signed by the exhibitor AND their parent or guardian unless the exhibitor is 18 years of age or older. Entry forms are also available on line at www.cuyfair.com.
6. All entry forms must be received in the Fair Office by the end of the work day on Friday, July 24, 2026.
7. Open Class exhibits should be brought to the Junior Fair Building, located adjacent to Gate #5 off the Bagley Road Entrance, either Friday, Aug. 7 from 12:00 P.M. -6:00 P.M., or Saturday, Aug. 8 from 10:00 A.M. - 4:00 P.M. -NO ENTRIES ACCEPTED ON SUNDAY except Culinary from 9:30 A.M. - 11:30 A.M.
8. Judging will be on Sunday preceding the Fair and is closed to the public. Decision of the judges is final.
9. The Junior Fair Board does not assume responsibility for lost, stolen or broken objects.
10. All participants will be awarded a Participation Ribbon. At the discretion of the judges, a special Award of Excellence rosette and cash award may be awarded to any entry considered exceptional.
11. Exhibits must remain in place until the end of the Fair or released by the Fair Management. Any exhibit not in place for the full term SHALL FORFEIT any premium and/or award. Special consideration to the above rule can only be given when a written request is submitted in advance of the time of the entry.

JUNIOR FAIR (continued)

12. ALL EXHIBITS ARE TO BE THE WORK OF THE ENTRANT, NO GROUP PROJECTS SHOWN. EXHIBITS SHOULD HAVE BEEN DEVELOPED/PRODUCED BETWEEN SEPTEMBER OF THE PRECEDING YEAR AND AUGUST OF THE CURRENT YEAR.
13. Exhibits are subject to examination by a competent committee of Fair Board personnel to determine fitness for family exhibition purposes. Entries found to be unfit for any reason will be declared ineligible and not shown. The judges retain the right to refuse a premium award to any class or department. Judges are permitted to move an entry to another class if deemed necessary for the good of the exhibitor.
14. Every precaution will be taken to protect animals, exhibits, exhibitors and the general public from loss or injury. Fair Management will not be held responsible.
15. Any exhibit not removed from the Junior Fair Building by 2:30 P.M. on Monday the day after the Fair will be taken to the Fair Office and held for seven (7) days.
16. All exhibits and contests are subject to additional rules and requirements printed in each class.
17. **Questions? Please contact the Director-At-Large of the Department, Holly Everhart at CCFJrFair@yahoo.com.**

PARTICIPATING ORGANIZATIONS

4-H YOUTH DEVELOPMENT

Ohio State University Extension

Cuyahoga County

12200 Fairhill Road • Cleveland, OH 44120

(216) 429-8200

DAVID CIVITTOLO, Interim Associate Dean and Director Ohio State University Extension;

Director-At-Large, Ohio State University Extension

4-H is a community of young people across America who are learning leadership, citizenship, and life skills.

The Ohio State University, The United States Department of Agriculture, and Cuyahoga County participating

OSU Extension embraces human diversity and is committed to ensuring that all research and related educational programs are available to clientele on a nondiscriminatory basis without regard to age, ancestry, color, disability, gender identity or expression, genetic information, HIV/AIDS status, military status, national origin, race, religion, sex, sexual orientation, or veteran status. This statement is in accordance with United States Civil Rights laws and the U. S. D. A.

For deaf and hard of hearing, please contact Ohio State University Extension using your preferred means of communication (e mail, real services, or video relay services). Phone 1-800-750-0750 between the hours of 8:00 A.M. and 5:00 P.M. Monday through Friday. Inform the operator to dial 1-614-292-6181.

- 4-H reaches youth across Cuyahoga County with programs designed to:
- Establish sustainable relationships with caring adults and other youth;
 - Encourage community service and citizenship;
 - Develop marketable skills in youth and a vision of a successful future;
 - Promote and build upon experiences with persons from diverse backgrounds; and
 - Strengthen communities by developing volunteer skills in youth and adults.

JUNIOR FAIR (continued)

4-H programs work through community clubs with local volunteers and can also take place within schools or other organizations. We invite you to explore our website to learn more! <https://cuyahoga.osu.edu/program-areas/4-h-youth-development/cuyahoga-county-4-h>

ITEMS ENTERED INTO "OPEN CLASS" CATEGORIES CANNOT BE COUNTED AS ENTRIES IN 4-H PROJECT CLASSES; DIFFERENT ITEMS MUST BE SUBMITTED FOR EACH DIVISION ENTRY.

CUYAHOGA COUNTY 4-H ANIMAL SCIENCE AUCTION

Selling the County's Best 4-H Market Project Animals

Chickens • Turkeys • Steers • Lambs • Hogs • Rabbits

Cuyahoga County Fairgrounds

Saturday, August 15, 2026, 7:00 P.M.

The Auction will be held in the Cow Palace, located just inside Gate #5 on the Cuyahoga County Fairgrounds. Plan to attend and support the 4-H club members. These young people are the future leaders of our community.

The animals to be sold have been fed and prepared for sale by 4-H club members. Their parents have been your patrons for many years, and now you can show your appreciation for their patronage by supporting the auction. Plan to purchase this quality livestock either for resale or processing at the locker plant of your choice. The good will and advertising you create will benefit you and the 4-H members.

This is a "partial terminal" sale. Grand champion and reserve champion steers, lambs and hogs purchased are to go directly for processing as meat animals (per Ohio Department of Agriculture regulations). Most of the remaining animals sold are also processed for meat as well. Any animal purchased and donated back to a 4-H member is not eligible to be shown by the exhibitor or any other 4-H member in any county, independent, or state fair outside of Cuyahoga County.

Terms: Cash or check with proper identification the day of the auction.

And a special thanks to the Cuyahoga County Farm Bureau for their support of all our 4-H Market Project participants.

For information on how to sponsor next years Fair, please contact Holly Everhart at CCFJRFAIR@YAHOO.COM



LAKESHORE COMPACT FFA

22800 Fox Avenue • Euclid, Ohio 44123
instagram & Twitter: @lsc_urban_ag

The mission of the Lakeshore Compact FFA Club is to prepare the next generation of agricultural leaders so they can meet the challenges presented by food insecurity, social inequality, and climate change by learning and applying fundamental animal and plant science, leadership, communication, and workplace skills. Junior and Seniors from Euclid, Mentor, and Wickliffe learn and work on our school farm in Euclid and are then helped on to a career and college opportunities. Come grow with us!

JUNIOR FAIR (continued)

4-H AND THE CUYAHOGA COUNTY FAIR BOARD

**WISH TO THANK THE FOLLOWING
2026 JUNIOR FAIR LIVESTOCK BUYERS
AND AUCTION SUPPORTERS**

Bell Show Team LLC	Jon Durda
Brecksville Kids Dentistry	William Flynn
Candidate State Rep Chris Glassburn	Dave Fox
Cuyahoga County Fair	Justin Fox
Cleveland Chiropractic and Integrative Health Center	Lydia Fox
Congressman Max Miller & State Representative Mike Dovilla	Hannah Frasher
DCJ Landscaping	Grace Friend
Equine Essentials	Julia Gasbarre
Farm Bureau	Dio Giatis
Greystone Vet Hospital	Patrick Higley
Handrosh Farms	Erine Hines
J.D.'s Mums & More	Josh Irish
Ken Maurer	Joey Kochera
M3 Wealth Management	Andrew Koranda
Menke Grandview Farms	Melissa Marflak
North Royalton Animal Hospital	Brian and CC Martin
North Royalton City Council President	Clay McClure
Ohio Investment Partners	James Mikesina
Peth Family Farm	Robin Pierce
Preston Family Farms	Plogger Family
Provider Health Group	Susan Racey
Sullivan Orthodontics	Tom Sabrey
Alyssa Bower	Renee Schapel
Charlene Bower	Stosh Skoczen
Mary Bryk	Jen & Jeff Skoczen
Tom Chuna	Barbara Smiljanich
Doug Cline	Christian Sokolowski
Anita Cook	Amanda Stack
Richard Davis	Robin Stone
Nancy Dominik	Jill Theirn
Beth Dura	Jackie Welch
Jacob Durda	Ashly & Steve Welling



**We also thank the
Cuyahoga County Farm Bureau for their
continuing support of our 4-H Market Livestock Program**

THE BASIC PRINCIPLES OF A DEMOLAY

- Love of parents
- Respect for others, their beliefs, their opinions, the things they hold sacred
- Courtesy towards everyone
- Friendship
- Faithfulness
- Cleanliness in thought and action
- Patriotism



For more information, contact:
Denbrook Chapter in Berea, OH

denbrook1923@gmail.com



CHANGE LIVES!

RAINBOW GIRLS AND PLEDGES CAN:

- Do you like helping others?
- Want to make new friends?
- Want to try new things?
- Polish your public speaking?

Then Rainbow is for you! The International Order of the Rainbow for Girls offers young ladies, ages 6-20 the unique opportunity to do all of these things and so much more!

For more information, please email - District7Rainbow@gmail.com



Serving Girls in 18 Counties

One Girl Scout Way • Macedonia, OH 44056-2156

Telephone: 800-852-4474 • www.gsneo.org



BOY SCOUTS OF AMERICA

Lake Erie Council

2241 Woodland Avenue • Cleveland, Ohio 44115

Telephone: 216-861-6060

For more information, please contact the Greater Cleveland Council at
www.lecbsa.org

OPEN CLASS HORTICULTURE SECTION 100

Note: Rules and requirements at the beginning of Junior Fair section.

Best of Horticulture \$7.00 & Rosette

BEGINNER

Age through 7 years as of January 1 of current year.
Premiums: 1st - \$3.00; 2nd - \$2.00; 3rd - \$1.00 ; 4th - Ribbon only

Class

- 100 Garden Flower Specimen; 3 blooms same variety in clear glass container.
- 101 Seed Mosaic. Picture made with seeds, all natural no coloring
- 102 Caricature: Fruit and/or vegetable. All natural materials. No soft/leafy vegetables. Fruit: only oranges and apples.
- 103 Garden Specimen: Vegetable.
- 104 Houseplant: Growing in container for at least three months.
- 105 Fairy Garden

JUNIOR

Ages 8-13 as of January 1 of current year.
Premiums: 1st - \$3.00; 2nd - \$2.00; 3rd - \$1.00

Class

- 130 Seed Mosaic - Picture made with seeds, all natural no coloring
- 131 Garden flower Specimens: 3 blooms same variety in clear glass container
- 132 Garden Vegetable Specimen*
- 133 Caricature: Fruit and/or vegetable. All natural materials. No soft/leafy vegetables. Fruit: only oranges & apples.
- 134 Hanging basket: Grown in container for at least two months. Indoor/outdoor specimen
- 135 Fairy Garden

Class

- 160 Garden Flower Specimens: 3 blooms same variety in clear glass container
- 161 Garden Vegetable Specimens*
- 162 Caricature: Fruit and/or vegetable. All natural materials. No soft/leafy vegetables. Fruit: only oranges & apples.
- 163 Fairy Garden – Must contain miniature live plants and decorative figures

*Vegetable Specimens - small 3 same variety; large - 1 per plate

**OPEN CLASS ARTS & CRAFTS
SECTION 200**

Review rules and requirements at beginning of Junior Fair section.

ADDITIONAL RULES AND REQUIREMENTS AS FOLLOWS:

1. No Wood / Plastic Frames
2. ALL ART MATERIALS, POSTERS AND PHOTOGRAPHS **MUST BE MATTED OR MOUNTED ON A FIRM BACKING AND READY TO HANG. NO GLASS PERMITTED. WIRES, CORDS, OR HANGERS MUST BE ATTACHED SECURELY.**
3. Maximum overall dimension of any painting/picture shall not exceed 18" x 21" x 18", including mat.
 - Push pins will be used to hang when necessary
4. Valuable items should be boxed under glass/plastic.
5. Limit of one entry per class per child.
6. No names on the front of any project.
7. No craft or art project shall exceed 18" x 21" x 18", except for woodworking class numbers.
8. Photographs are to be 5"x7" size securely mounted on 8"x10" mat.
9. Photos must be taken by Exhibitor

*Best of Photography - \$7.00 & Rosette
Best of Painting / Drawing - \$7.00 & Rosette*

BEGINNER

*Age through 7 years; as of January 1 of this year.
Premiums: 1st - \$3.00; 2nd - \$2.00; 3rd - \$1.00; 4th - Ribbon only*

Class

201. Painting, any medium
202. Drawing, any medium - no paint
203. Print Making, any medium
204. Paper Craft
205. Sculpture, any medium - handmade
206. Ceramics, fired - handmade / wheel thrown
207. Mask Making, any medium
208. Duct Tape Creation, 90% duct tape
209. Recycled Art, 90% of recycled materials
210. Holiday Craft
211. Weaving/Braiding
212. Wooden Stick Art
213. Jewelry, any medium
214. Painted Rock
215. Scrapbook Page
216. Decorated Ceramics
217. Photography - People
218. Photography - Animal
219. Photography - Other
220. Drawing Pencil/Pen
221. Any craft other than above

JUNIOR

*8 years of age thru 13 years old; as of January 1 of this year.
Premiums: 1st - \$3.00; 2nd - \$2.00; 3rd - \$1.00; 4th - Ribbon only*

Class

231. Painting, any medium
232. Drawing, any medium - no paint
233. Print Making, any medium
234. Paper Craft
235. Sculpture, any medium - handmade
236. Ceramics, fired (hand built / wheel thrown)
237. Mask Making, any medium
238. Duct Tape Creation, 90% duct tape
239. Jewelry, any medium

240. Holiday Craft
241. Weaving/Braiding
242. Painted Rock
243. Photography - People
244. Photography - Animal
245. Photography - Human interest - seascape
246. Photography - Human interest - landscape
247. Photography - Human interest - nature
248. Computer Assisted Graphics (original photo on back)
249. Woodworking (no size requirement) - Kit
250. Woodworking - (no size requirement) - No Kit
251. Scrapbook Page
252. Most Unusual Collection (10 pcs. max., 18" x 18" size)
253. Recycled Art, 90% of recycled materials
254. Drawing Pencil/Pen
255. Any craft other than above

SENIOR

*14 years of age thru 19 years old; as of January 1 of this year.
Premiums: 1st - \$3.00; 2nd - \$2.00; 3rd - \$1.00; 4th - Ribbon only*

Class

260. Painting, any medium
261. Drawing, any medium - no paint
262. Digital Art, max size 8.5" x 11"
263. Paper Craft
264. Sculpture, any medium - handmade
265. Ceramics, fired (hand built / wheel thrown)
266. Mask Making, any medium
267. Photography - People
268. Photography - Animal
269. Photography - Human interest - seascape
270. Photography - Human interest - landscape
271. Photography - Nature
272. Computer Assisted Graphics (original photo on back)
273. Woodworking (no size requirement) - Kit
274. Woodworking (no size requirement) - No Kit
275. Recycled Art, 90% of recycled materials
276. Duct Tape Creation, 90% duct tape
277. Holiday Craft
278. Jewelry, any medium
279. Weaving/Braiding
280. Retro Toy Collection - Must be a least 1 decade old (10 pcs. max., 18" x 18" size)
281. Scrapbook Page
282. Decorated Ceramics
283. Drawing Pencil/Pen
284. Painted Rock
285. Any craft other than above

SPECIAL NEEDS

*No age grouping/limit
Premiums: 1st - \$3.00; 2nd - \$2.00; 3rd - \$1.00; 4th - Ribbon only*

Class

290. Painting/Drawing, any medium
291. Sculpture, any medium
292. Any craft other than the above
293. Any Collection - 10 pcs. max., 18" x 18" size

OPEN CLASS CULINARY SECTION 300

Review rules and requirements at beginning of Junior Fair section.

ADDITIONAL RULES AS FOLLOWS:

1. Open to youth through 19 years of age as of January 1 of this year. No age divisions.
2. All entries to be dropped off Sunday before Fair from 9:30 A.M. - 11:30 A.M.
3. All exhibits MUST be able to withstand summer temperatures.
4. Copy of recipe must be attached (except Class 301 Decorated Cake).
5. One entry per class.
6. Items that need refrigeration will NOT be accepted.
7. Any type of pie pan may be used, but fair management will NOT be responsible for pan. Disposable preferred.
8. Recipes become property of CCAS.

Best of Culinary - \$7.00 & Rosette

CAKES/PIE

Premiums: 1st - \$3.00; 2nd - \$2.00; 3rd - \$1.00; 4th - Ribbon only

Class

300. Cake, Iced (1/4 cake)
301. Decorated Cake (cake form acceptable)
302. Cupcakes, Iced (6 per plate)
303. Pie, Fruit - whole (8" or 9")

BREADS, QUICK

Premiums: 1st - \$3.00; 2nd - \$2.00; 3rd - \$1.00; 4th - Ribbon only

Class

304. Loaf, (1/2 of loaf)
305. Muffins, (6 per plate)

BREADS, YEAST

Premiums: 1st - \$3.00; 2nd - \$2.00; 3rd - \$1.00; 4th - Ribbon only

Class

306. Loaf, (1/2 of loaf)
307. Sweet rolls (3 per plate)

COOKIES

Premiums: 1st - \$3.00; 2nd - \$2.00; 3rd - \$1.00; 4th - Ribbon only

Class

308. Bar (6 per plate)
309. Dropped (6 per plate)
310. Rolled (6 per plate)
311. Molded, by hand (6 per plate)
312. Any other type (6 per plate)
313. Chocolate Chip (6 per plate)

\$5 FAIR ADMISSION

FOR KIDS, VETS & SENIORS

Tuesday, August 11th ONLY

For Kids 3 to 12, Veterans (with ID) and Seniors (60 and over)

GENERAL ADMISSION: \$10 • RIDE TICKETS SEPARATE

CHILDREN 2 AND UNDER & ACTIVE MILITARY (WITH ID) ARE FREE EVERY DAY!

CANDY

Premiums: 1st - \$3.00; 2nd - \$2.00; 3rd - \$1.00; 4th - Ribbon only

Class

314. Fudge (6 pieces per plate)
315. Any other type (6 pieces per plate)

SWEET TREAT

Premiums: 1st - \$3.00; 2nd - \$2.00; 3rd - \$1.00; 4th - Ribbon only

Class

316. Candy/NO COOK RECIPE (6 per plate)
317. Cookie: NO BAKE RECIPE (6 per plate)

BROWNIES

Premiums: 1st - \$3.00; 2nd - \$2.00; 3rd - \$1.00; 4th - Ribbon only

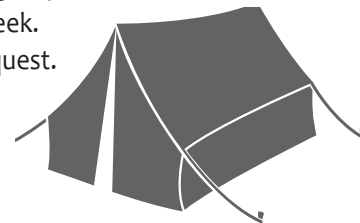
Class

318. Brownies without nuts (6 per plate)
319. Brownies with nuts (6 per plate)

YOUTH GROUP CAMPING AVAILABLE DURING FAIR WEEK

Individual scout units are encouraged to participate in activities at the fair. Youth groups are welcome to camp on-site during Fair Week. Sites are available upon request.

Contact Holly Everhart
CCFJrFair@yahoo.com



For information on other activities and contests open to youth — such as Classic Pony and Horse Show, Home and Hobby, Farm Bureau Museum and youth activities — see information in other sections of this book.

Visit Our Website!



CUYFAIR.COM

OPEN CLASS - SEWING & DECORATED GARMENTS
SECTION 400

Review rules and requirements at beginning of Junior Fair section.

ADDITIONAL RULES AS FOLLOWS:

1. Open to all youth through 19 years of age as of January 1 of current year.
2. This category includes both clothing made by the entrant, and purchased garment items which are then tie-dyed, embroidered, appliquéd, or otherwise embellished by the person entering the item.
3. All garments are to be displayed on hangers and can be covered with a clear plastic sleeve.
4. A special Award of Excellence can be given at the discretion of the judges.
5. All needlecraft items not shown as a garment are to be exhibited in Open Class Art and Crafts.
6. Any garment entered in open class MAY NOT be removed from the display for use in any other exhibition.
7. No more than one entry per class by same participant.
8. Classes 401, 402, 430-434, 436, 461-464 and 466-468 **MUST BE SEWN BY THE EXHIBITOR.**

Best of Sewing - \$7.00 & Rosette

BEGINNER

Ages through Age 7 as of January 1 of current year
Premiums: 1st - \$5.00; 2nd - \$3.00; 3rd - \$2.00; 4th - Ribbon only

Class

401. Any garment
402. Any item other than garment
403. Decorated garment

JUNIOR

Ages 8-13 as of January 1 of current year
Premiums: 1st - \$5.00; 2nd - \$3.00; 3rd - \$2.00; 4th - Ribbon only

Class

430. Lounge or sleepwear
431. Sportswear
432. Dress, any length
433. Any other garment
434. Quilts
435. Decorated garment
436. Item other than garment

SENIOR

Ages 14-19 as of January 1 of current year
Premiums: 1st - \$5.00; 2nd - \$3.00; 3rd - \$2.00; 4th - Ribbon only

Class

461. Lounge or sleepwear
462. Sportswear
463. Dress, any length
464. Blazer or jacket
465. Decorated garment
466. Any other garment
467. Item other than garment
468. Quilts

OPEN CLASS: SCIENCE | ENGINEERING | CREATIVITY
SECTION 500

Review rules and requirements at beginning of Junior Fair section.

ADDITIONAL ENTRY RULES AS FOLLOWS:

1. No age divisions. Open to youth through 19 years of age as of January 1 of this year. Except where noted. One entry per class.
2. Displays/Models are to be securely mounted on a firm base and limited to a maximum of 15" x 20" of table area unless noted on entry form AND approved in advance by Superintendents of the Junior Fair Department.
3. Collections are groups of items on a particular subject arranged in a specific order and correctly identified. All collections MUST follow the rules below.
4. Should not have been previously entered in the Junior Fair.
5. The collection must be a minimum of 10 specimens and mounted or boxed in a secure manner. NO loose items.
6. Each specimen must be labeled with the name, county, state or country of origin, if applicable.
7. Collections will be judged on the basis of neatness and correctness of information.
8. Collections of bird/animal nests, eggs, feathers, or pelts/skins will NOT be accepted for display or judging.

Best of Science & Engineering - \$20.00 & Rosette

COLLECTIONS (only one entry per class)

Premiums: 1st - \$3.00; 2nd - \$2.00; 3rd - \$1.00; 4th - Ribbon only

Class

501. Leaves/plants, labeled
502. Rocks/minerals, labeled
503. Any other nature collection

POSTER, ANY MEDIA

Premiums: 1st - \$3.00; 2nd - \$2.00; 3rd - \$1.00; 4th - Ribbon only

Class

504. Poster; Science or Engineering Theme - 11"x17"

DISPLAYS/MODELS, THREE DIMENSIONAL

(Note Rules & Size above)

Premiums: 1st - \$3.00; 2nd - \$2.00; 3rd - \$1.00

Class

506. Terrestrial (landscape, architecture)
507. Scientific (anatomy, botony, etc.)
508. Transportation, any vehicle - no kit
509. Lego up to 36" x 36" - no kit
510. K-NEX up to 36" x 36" - no kit
511. 3-D Printed
512. Pinewood Derby Car
513. Robotic
514. Any Other

BUILDING BLOCK CONTEST SECTION 610

**Tuesday, August 11th, 2026
7:00-8:00 P.M.**

- All participants must pre-register
- Day of entries **MAY** be available if space allows
- All materials will be supplied
- Register by filling out the Junior Entry form located in the back of the book.
- Please contact us at ccfjrfair@yahoo.com if you have any questions.
- All participants **MUST** check in at the Junior Fair desk by 6:30. Failure to check-in may result in no being able to participate.
- Creation to be built to be determined by the judge(s) at time of contest.
- Rosettes given to 1st - 4th places
- Creations to be on display during Fair Week.

Class

- 610. Ages 9-13
- 611. Ages 14-19

CREATIVE CRAFT SCRAMBLER SECTION 620

**Wednesday, August 12th, 2026
9:30-11:00 A.M.**

- All participants must pre-register
- Day of entries **MAY** be available if space allows
- All materials will be supplied
- Register by filling out the Junior Entry form located in the back of the book.
- Please contact us at ccfjrfair@yahoo.com if you have any questions.
- All participants **MUST** check in at the Junior Fair desk by 9:00. Failure to check-in may result in no being able to participate.
- Creation to be built to be determined by the judge(s) at time of contest.
- Rosettes given to 1st - 4th places
- Creations to be on display during Fair Week.

Class

- 620. Ages 5-8
- 621. Ages 9-13
- 622. Ages 14-19

JUNIOR FAIR BAKE-OFF & AUCTION SECTION 700

Friday of Fair Week

*Entry Forms must be submitted
See entry deadline under General Rules
No repeat winning recipes*

Review Rules and Requirements at the beginning of Jr. Fair section. Pre entered bake-off products will be accepted Friday until 6:00 P.M. in the Junior Fair Building. Look up your favorite dessert recipe! Prepare the specialty that has already won the praises of your family and the envy of your friends!

YOUTH ENTRANTS CAN WIN A RIBBON AND A CASH PRIZE & OTHER AWARDS
1st Place \$20.00 • 2nd Place \$15.00 • 3rd Place \$10.00

CONTEST RULES

1. Use the regular Junior Fair Entry form in this book. See entry deadline under General Rules.
2. Entrants can be a participant/exhibitor in the Junior Fair Department of the Cuyahoga County Fair, or any adult interested in supporting the Junior Fair. Adult entrants are not eligible for premiums or ribbons.
3. Cookies, muffins, rolls, cupcakes must be "Baker's Dozen."
4. Two copies of the recipe **MUST** accompany the product on Friday of the Fair.
5. Entries requiring refrigeration cannot be accepted.
6. Please use disposable plates or pans.
7. All entries become the property of the Junior Fair and **WILL** be auctioned at the Junior Fair Bake-Off Auction immediately following judging. Approximately 7:00 P.M.
8. Junior Fair Officials have the right to disqualify any entry that appears to be commercially produced.
9. All contestants are encouraged to help display their entries at the Junior Fair Bake-Off Auction.

JUNIORS

Class

- 701. Ages 8 - 13 as of January 1 of current year

SENIORS

Class

- 702. Age 14 - 19 as of January 1 of current year

FRIENDS OF JUNIOR FAIR DIVISION

Class

- 703. Ages 20 & up as of January 1 of current year



EARLY BIRD ENTRY FEE \$10
Postmarked by July 12, 2026

LAST DAY FOR ALL ENTRIES
July 24, 2026

TERRARIUM EXHIBIT SECTION 900

Class:
901: 8 years and younger as of 1/1/2026
902: 9 - 13 years as of 1/1/2026
903: 14 - 19 years as of 1/1/2026



HOLDEN FORESTS & GARDENS

Sponsored by Cleveland Botanical Garden

Terrariums are an easy and creative way to explore plant science using items you can find or make around the house! The rules for this exhibit are that every terrarium must:

1. be tightly enclosed in a transparent container with lid
2. include at least one living plant inside
3. be decorated with a theme

PRIZES

BEGINNERS (7 YEARS AND YOUNGER AS OF 1/1/24): FOREST THEME LEGO SET
 JUNIORS (8-13 YEARS AS OF 1/1/24): GARDEN THEME LEGO SET
 SENIORS (14-19 YEARS AS OF 1/1/24): TREEHOUSE THEME LEGO SET

HOW TO MAKE YOUR TERRARIUM

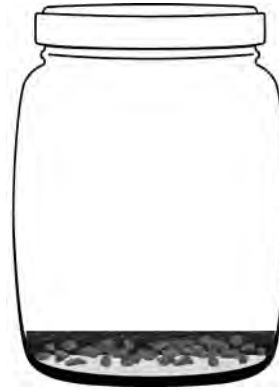
1. Select a clear container with a wide mouth and lid that closes tightly.



2. Line the bottom of the container with crushed charcoal. Water should never fill the jar higher than this. The charcoal will help prevent odors and bacteria buildup.



3. Add a layer of soil or you can use sphagnum moss from a pet store because it's more sterile. Either is fine for this project. You only need to make your layer one inch deep.



4. Place live moss to make a carpet of green. You may choose for moss to be your only plant. You can experiment with other very small plants, as well! Add water and close the jar.



5. Decorate your terrarium with a creative theme. Clearly label it with your name and theme, too!



Scan For Video

DIRECTORS-AT-LARGE

Cuyahoga County Agricultural Society



Carl Cooley
President
North Olmsted



Larry Theurer
Vice-President
Cleveland



Gail Royak-Wind
Treasurer
Brook Park



Joanne Scudder
Secretary
Brecksville



Diane Barton
Parma



Jeff Collins
Bay Village
North Royalton



Dennis Eck
Strongsville



Jordyn Dickson
Bedford



Holly Everhart
Berea



Tim Fowler
North Royalton



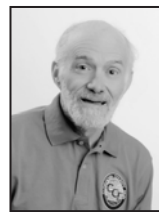
James Lewandowski
Parma



Tom Sabrey
Strongsville



Bob Sculac
Olmsted Falls



James Shea Jr.
Olmsted Falls

STAFF				
	Susan Bachie Bookkeeper	Barry Pettit Maintenance	Jacqueline Kinder Office Administrator	Pat Surak Office Assistant

Cuyahoga County Agricultural Society Mission Statement

"To exhibit, to educate and to demonstrate agribusiness products and techniques from the past, present and future in a festive atmosphere for all generations."

YOUR COUNTY OFFICIALS SALUTE THE 128TH CUYAHOGA COUNTY FAIR & EXPOSITION

Chris Ronayne,
County Executive

Dale Miller,
Council President

Yvonne M. Conwell,
Council Vice-President

Council Members

Patrick Kelly Martin J. Sweeney Mark Casselberry Michael J. Gallagher Robert E. Schleper, Jr.
Pernel Jones, Jr. Meredith M. Turner Michael J. Houser, Sr. Sunny M. Simon



IT'S ELECTRIC!

Experience the power of the wind through our 262 foot tall, 500 kW Wind Turbine.

Our 2,000 sq. ft. Sustainability Center is full of energy efficient elements such as lighting, sensors, solar tubes and solar attic fans, not to mention numerous construction materials such as high R value insulation, insulated concrete slab floors and a state of the art heating and cooling system. We also offer a small classroom that can be reserved for organizational, educational and community meetings. Our classroom seats 40 people theater style, or 25 people at tables and the entire building is wireless.

VISIT TODAY

A Wind Energy Curriculum and assisted instruction is available on site. Design and build a renewable energy device to take home as a part of a visit.

Please note: The instructional lessons, make and take renewable energy projects and tours **MUST** be scheduled ahead of time. A fee may be charged to cover the cost of the project materials.

School and educational tours may be divided into three sections and rotated through the Sustainability Center, Solar Fountain and a Turbine Walk depending on the number of participants. Students must be accompanied by certified teachers and/or adult chaperones.

**Tours must be scheduled and available dates fill up quickly. Please call the Fairboard Office,
440-243-0090 x100
for details and to schedule your tour.**

2026 Cuyahoga County Jr Fair Ambassador

APPLICATION DEADLINE:
Saturday, July 11, 2026

INTERVIEWS:
Week of July 20, 2026
Location: Jr. Fair Building

ANNOUNCEMENT OF WINNERS:
Monday, August 10, 2026



Who is eligible? All Jr Fair youth who are 15-18 as of January 1, 2025, and have actively participated in at least one Cuyahoga County Fair in the last 3 years.

Middleburg Heights Historical Society



Stay up to date with Historical Society events and information by following us on Facebook!



Email: mhhistoricalociety@yahoo.com

How To Register Your Exhibits On-Line

- Go to the following link: WWW.CUYFAIR.COM
- Select the FAIR INFO Tab
- Scroll down to PREMIUM Book
- Select 2026 PREMIUM BOOK ONLINE ENTRY
- Making a list of entries prior to entering data may make it easier and quicker for you.
- Departments and codes can be found in the Cuyahoga County Premium Book. An electronic copy of the premium book can be found on the Cuyahoga County Fair website. (www.cuyfair.com)
- Click 'Create New Account' and follow on-screen instructions.
- Please Note - User accounts do NOT carry over from previous years. If you had an online account in previous years, you will have to create a new account for this year.
- Complete all required fields and select 'Save Account Information'
- Read the Terms of Service and click 'Accept'
- Once logged in you will see different tabs across the top of page.
- Click on 'Entries'
- Click on a Department in the list to expand the 'List of Available Entry Selections.'
- Listings are in Department number order. (Please reference Cuyahoga County Premium Book for specifics for each class)
- Select (1) entry at a time.
- After a department is expanded, click the (+) sign on the left of the page to expand a specific class and lot numbers.
- After displaying a particular class, click ADD to add the specified Lot number you want to enter.
- After you add an entry, a pop up box will appear that tells you "Entry has been added."
- To add another entry, scroll to the top of the page and select another department/class/lot.
- When finished adding your fair entries, go to "Review Entries" and verify that all is accurate.
- Make any corrections as needed.
- Once you are satisfied with your entries, go to "Items/Checkout" from the top of the screen and follow on-screen directions.
- Online entries must be paid by credit card at the time of processing in order for submissions to be completed.
- Once your credit card information has been entered a receipt is available by clicking the Print/Preview screen.
- Early-Bird Entry Deadline is Monday, July 12th, 2026 by 12:00 pm.

**Deadline for all ON-LINE entries is Friday,
July 24th, 2026, at 12:00 pm.**

There are NO EXCEPTIONS.

**Physical entries (in-person or postmarked) must be
received by July 24, 2026.**



Exhibitor # _____

Processed By: _____

Entered By: _____

Exhibitors Entry Form For ARTS & CRAFTS, CANINE, FLORAL and GARDEN PRODUCE

Cuyahoga County Fair | PO Box 135 | Berea, OH 44017

Phone: 440-243-0090 | Fax: 440-243-0344

FAIR DATES: AUGUST 11-16, 2026 | PHYSICAL ENTRIES ENTRIES CLOSE: JULY 24, 2026

ONLINE ENTRIES ACCEPTED THROUGH JULY 24 AT MIDNIGHT • ENTER ONLINE AT WWW.CUYFAIR.COM

Name: _____ Phone: _____

Address: _____ E-Mail: _____

City: _____ State: _____ Zip: _____



FOR USE WITH FLORAL & GARDEN PRODUCE ONLY

Line	Dept	Section	Class	# of Entries	Description of Entry As Written in the Premium Book	1st Show	2nd Show
1							
2							
3							
4							
5							
6							
7							
8							
9							
10							
11							
12							
13							
14							
15							
16							
17							
18							
19							
20							

NOTE: Please refer to to the Premium Book for Exhibitor Entry Requirements. | Use reverse side of this form for additional entries.

Unclaimed items will be donated to charity 7 days after the the close of the Fair.

ENTER ONLINE AT: WWW.CUYFAIR.COM • THIS FORM MY BE DUPLICATED AS NEEDED

FEES: **Early Entry : \$10.00** (2 Admissions - postmarked before July 12) **Regular Entry : \$15.00** (2 Admissions - postmarked between July 13-23) **Make Check Payable to: Cuyahoga County Fair or Provide CC Info Below** PLEASE INDICATE TOTAL NUMBER OF ENTRIES

CREDIT CARD: VISA MC DISC AMEX | CARD # _____ EXP. _____ CVV _____

The Cuyahoga County Fairboard and Cuyahoga County Agricultural Society assume no responsibility for livestock and/or articles exhibited, entered and/or shown upon the Cuyahoga County Fairgrounds. Exhibitor/Entrant specifically acknowledges his/her or its awareness that livestock and exhibition articles are placed upon and maintained upon the Cuyahoga County Fairgrounds by them at their sole risk. Further, entrant/exhibitor agrees to hold the Cuyahoga County Agricultural Society and the Cuyahoga County Fairboard harmless from any and all claims to or resulting from their respective livestock and/or exhibits from any cause whatsoever. The aforesaid indemnification shall include injuries to the person or property of third properties resulting from the aforesaid livestock and/or exhibition articles. The Cuyahoga County Fairboard assumes no responsibility for errors or omissions in the foregoing booklet.

MUST BE SIGNED BY PARENT/GUARDIAN IF UNDER 18

EXHIBITOR (PRINT) _____ EXHIBITOR (SIGN) _____ DATE _____

Line	Dept	Section	Class	# of Entries	Description of Entry As Written in the Premium Book	1st Show	2nd Show
21							
22							
23							
24							
25							
26							
27							
28							
29							
30							
31							
32							
33							
34							
35							
36							
37							
38							
39							
40							
41							
42							
43							
44							
45							
46							
47							
48							
49							
50							
51							
52							
53							
54							
55							



THIS FORM MAY BE DUPLICATED AS NEEDED

Name _____ Phone _____ Cell _____

Address _____ City _____ State _____ Zip _____

E-mail _____

Exhibitor # _____

Processed By: _____

Entered By: _____

Exhibitors Entry Form For JUNIOR FAIR

Cuyahoga County Fair | PO Box 135 | Berea, OH 44017

Phone: 440-243-0090 | Fax: 440-243-0344

FAIR DATES: AUGUST 11-16, 2026 | PHYSICAL ENTRIES ENTRIES CLOSE: JULY 24, 2026

THERE IS NO FEE FOR JUNIOR FAIR ENTRIES MAILED OR DROPPED OFF AT THE OFFICE.

Name: _____ Age: _____ Phone: _____

Address: _____ E-Mail: _____

City: _____ State: _____ Zip: _____

Line	Section	Class	Description of Entry As Written in the Premium Book
1			
2			
3			
4			
5			
6			
7			
8			
9			
10			
11			
12			
13			
14			
15			
16			
17			
18			
19			
20			

NOTE: Please refer to the Premium Book for Exhibitor Entry Requirements. | Use reverse side of this form for additional entries.

Unclaimed items will be donated to charity 7 days after the the close of the Fair.

ENTER ONLINE AT: WWW.CUYFAIR.COM • THIS FORM MY BE DUPLICATED AS NEEDED

The Cuyahoga County Fairboard and Cuyahoga County Agricultural Society assume no responsibility for livestock and/or articles exhibited, entered and/or shown upon the Cuyahoga County Fairgrounds. Exhibitor/Entrant specifically acknowledges his/her or its awareness that livestock and exhibition articles are placed upon and maintained upon the Cuyahoga County Fairgrounds by them at their sole risk. Further, entrant/exhibitor agrees to hold the Cuyahoga County Agricultural Society and the Cuyahoga County Fairboard harmless from any and all claims to or resulting from their respective livestock and/or exhibits from any cause whatsoever. The aforesaid indemnification shall include injuries to the person or property of third parties resulting from the aforesaid livestock and/or exhibition articles. The Cuyahoga County Fairboard assumes no responsibility for errors or omissions in the foregoing booklet.

MUST BE SIGNED BY PARENT/GUARDIAN IF UNDER 18 - SEE PG 46

EXHIBITOR (PRINT) _____ EXHIBITOR (SIGN) _____ DATE _____

Line	Section	Class	Description of Entry As Written in the Premium Book
21			
22			
23			
24			
25			
26			
27			
28			
29			
30			
31			
32			
33			
34			
35			
36			
37			
38			
39			
40			
41			
42			
43			
44			
45			
46			
47			
48			
49			
50			
51			
52			
53			
54			
55			
56			
57			
58			
59			
60			

THIS FORM MAY BE DUPLICATED AS NEEDED

Signature of Parent or Guardian _____

Exhibitor#

Processed By:

Entered By:

JUNIOR FAIR TERRARIUM

Cuyahoga County Fair I PO Box 135 I Berea, OH 44017

Phone: 440-243-0090 I Fax: 440-243-0344

FAIR DATES: AUGUST 11-16, 2026 | PHYSICAL ENTRIES ENTRIES CLOSE: JULY 24, 2026
ONLINE ENTRIES ACCEPTED THROUGH JULY 25 AT MIDNIGHT ENTER ONLINE AT WWW.CUYFAIR.COM
THERE IS NO FEE FOR JUNIOR FAIR ENTRIES MAILED OR DROPPED OFF AT THE OFFICE.
ON-LINE REGISTRATIONS FOR JUNIOR FAIR ARE FREE.

Name: _____ Age: _____ Phone: _____

Address: _____ E-Mail: _____

City: _____ State: _____ Zip:-----

Youth Organization to which you belong: (if any): _____

Adult Leader: _____ Phone: _____

Your Theme: _____

Optional notes about your theme: _____

Optional notes about your process: _____

NOTE: Please refer to to the Premium Book for Exhibitor Entry Requirements. Use reverse side of this form for additional entries.
Unclaimed items will be donated to charity 7 days after the the close of the Fair.

ENTER ONLINE AT: WWW.CUYFAIR.COM • THIS FORM MY BE DUPLICATED AS NEEDED

The Cuyahoga County Fairboard and Cuyahoga County Agricultural Society assume no responsibility for livestock and/or articles exhibited, entered and/or shown upon the Cuyahoga County Fairgrounds. Exhibitor/Entrant specifically acknowledges his/her or its awareness that livestock and exhibition articles are placed upon and maintained upon the Cuyahoga County Fairgrounds by them at their sole risk. Further, entranvexhibitor agrees to hold the Cuyahoga County Agricultural Society and the Cuyahgcoa County Fairboard harmless from any and all claims to or resulting from their respective livestock and/or exhibits from any cause whatsoever. The aforesaid indemnification shall include injuries to the person or property of third properties resulting from the aforesaid livestock and/or exhibition articles. The Cuyahoga County Fairboard assumes no responsibility for errors or omissions in the foregoing booklet.

UST BE SIGNED BY PARENT/GUARDIAN IF UNDER 18 • SEE PG

EXHIBITOR (PRINT) _____ EXHIBITOR (SIGN) _____

DATE _____



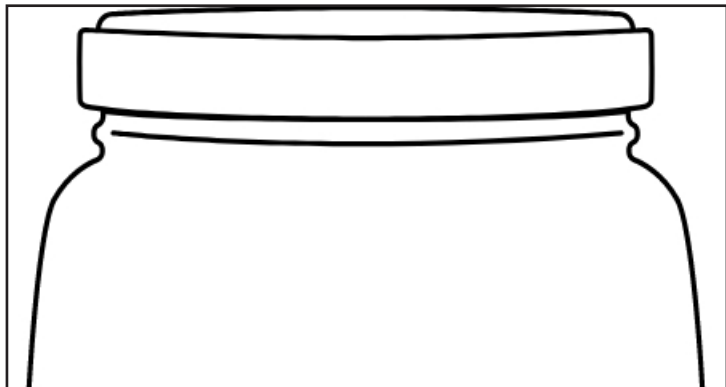
The Berea City Club has made contributions supporting the refurbishing of the Cuyahoga County Fairgrounds Victory Arch at Gate 1, the electronic marquee on Bagley Road and the future re-design and installation of the Bagley Road Gate to the Cuyahoga County Fairgrounds. Thank You Berea City Club for your Continued Support of Our Fair!



DATES:

November 7-8, 2026 • December 5-6, 2026
 January 2-3, 2027 • February 6-7, 2027
 March 6-7, 2027

Saturday - Sunday 7am - 1pm



NEW!

**CCF
T-SHIRTS**



**\$20
EACH**

ON SALE NOW IN THE FAIR OFFICE

164 EASTLAND ROAD IN BERE A • WWW.CUYFAIR.COM

The Legion of Mary



The Legion of Mary is a voluntary Catholic apostolic organization, consisting of approximately 3 million men and women in over 170 countries. We serve all people with spiritual works of mercy in our world's battle of good over evil. Please visit our booth in building D at the fair, or at our website at:

Legionofmarynorthernohio.org

Unaccompanied Minor Protocol

- To be admitted to the Cuyahoga County Fair after 6pm, all youth under the age of 18 years are required to be accompanied by an adult, sober and competent person aged 21 or older who will supervise the youth while at the Cuyahoga County Fair (such as a parent, legal guardian, relative or other adult). After 6pm unattended youths without a chaperone will be denied entry and asked to leave or return with a chaperone.
- One chaperone may accompany no more than six (6) guests under the age of 18 years of age, per day.
- This policy applied regardless of entry method, such as a pre-purchased ticket or re-entry with a hand stamp from earlier in the day.
- Proof of age is required. Any fairgoer, including those over 18 years, may be required to show a valid governmental identification for proof of age.
- The Cuyahoga County Fair and the Cuyahoga County Sheriff's Department reserve the right to remove any fairgoer, of any age, violating any law, rule, or policy.
- This policy will be enforced daily.
- Exceptions or challenges to this policy will be satisfied at the discretion of the Cuyahoga County Fair Board President.
- Those youth under the age of 18 years with valid fair, vendor, or carnival employee or volunteer credentials will be permitted to enter the fairgrounds without a supervising party.

CUYAHOGA COUNTY FAIR

EXHIBITOR DROP-OFF AND PICK-UP SCHEDULE

AUGUST 2026



THURSDAY, AUG 6, 2026,

1. Arts & Crafts Dept 4A DROP OFF (Building 27) 6PM to 8PM
2. Wine & Beer DROP OFF for Classes 200-299 (In Arts & Crafts Bldg. 27) 6PM to 8PM

FRIDAY, AUGUST 7, 2026

1. Arts & Crafts Dept 4A DROP OFF (Building 27) 9AM to 8PM
2. Wine & Beer DROP OFF for Classes 200-299 (Bldg 29.) 9AM to 8PM
3. Domestic Arts & Hobbies Dept 4B DROP OFF (Building 29) All entries (Except Culinary) 9AM to 8PM

SATURDAY, AUGUST 8, 2026

1. Arts & Craft Dept 4A (Building 27) DROP OFF 9AM - 4PM
2. Wine & Beer DROP OFF for Classes 200-299 (Building 29) 9AM to 4PM
3. Domestic Arts & Hobbies Dept 4B DROP OFF (Building 29) - All entries except Classes 164-199 | 9AM to 4PM
4. Garden and Produce Dept 25 FIRST SHOW DROP OFF in Building 16 | 9AM to 4PM
5. Bees and Honey Entry SET-UP | Noon to 4PM
6. Floral Dept 28 Container Grown Plants DROP OFF | 9AM to 4PM (judging Monday at 10AM)
7. Floral Dept 28 Fairy Gardens DROP OFF | 9AM to 4PM (judging Monday at 10AM)
8. JUNIOR FAIR Entries (Except Culinary) DROP OFF 10AM - 4PM
9. Canine Dept DROP OFF 10AM - 4PM

SUNDAY, AUGUST 9, 2026

1. Domestic Arts & Hobbies Dept 4B DROP OFF (Building 29) - Culinary Entries Except 165-199 | 9AM to 11:30AM
2. Bees and Honey Entry SET-UP | 9AM to NOON
3. Garden & Produce Dept 25 FIRST SHOW DROP OFF 9AM - NOON
4. Floral Dept 28 Container Grown Plants DROP OFF | 9AM to 4PM (judging Monday at 10AM)
5. Floral Dept 28 Fair Gardens DROP OFF | 9AM to 4PM (judging Monday at 10AM)
6. JUNIOR FAIR Entries Culinary ONLY DROP OFF | 9:30AM to 11:30AM

MONDAY, AUGUST 10, 2026,

1. Floral Dept 28 FIRST SHOW Design Arrangements DROP OFF | 7:30PM to 10:30PM (judging Tuesday at 10:30AM)

TUESDAY, AUGUST 11, 2026

FAIR BEGINS | NOON - 11PM

1. Floral Dept 28 Cut Specimen Blooms DROP OFF | 7:30AM to 10AM (judging Tuesday at 10:30AM)
2. Floral Dept 28 FIRST SHOW Design Arrangements DROP OFF | 7:30AM to 10AM (judging Tuesday at 10:30AM)

WEDNESDAY, AUGUST 12, 2026

FAIR HOURS | NOON - 11PM

1. Garden & Produce Dept 25 SECOND SHOW DROP OFF in Building 16 | 6PM to 9:30PM

THURSDAY, AUGUST 13, 2026

FAIR HOURS | NOON - 11PM

1. Domestic Arts & Hobbies Dept 4B DROP OFF - Culinary Entries 164-199 | 9AM to 10AM
2. Pies May Be DROPPED OFF (Classes 180-192) | 9AM to 12:30PM
3. Garden & Produce Dept 25 SECOND SHOW DROP OFF in Building 16 | 8AM to 9:30AM
4. Floral Dept 28 Rose Show DROP OFF | 7:30AM (judging at 10AM)
5. FIRST SHOW Design Arrangement PICK-UP Begins | 9:30PM
6. Floral Dept 28 SECOND SHOW Design Arrangements DROP OFF | 7 PM to 10:30PM (judging Friday at 10:30AM)

FRIDAY, AUGUST 14, 2026

FAIR HOURS | NOON - 11PM

1. Ironing Contest | Olde Barn Pavilion | 6PM

SATURDAY, AUGUST 15, 2026

FAIR HOURS | 10AM - 11PM

1. Floral Dept 28 SECOND SHOW Design Arrangements DROP OFF | 7:30AM to 10:45AM (judging Saturday at 11AM)

SUNDAY, AUGUST 16, 2026

FAIR HOURS | NOON - 10PM

1. Bees & Honey Entry PICK-UP | 8:30PM - 10PM
2. Garden Produce a Floral Department PICK UP | 8:30PM - 10PM
3. JUNIOR FAIR Entry PICK-UP | 8:30PM - 10PM
4. Canine Display (Dept 12) PICK-UP | 8:30PM - 10PM

MONDAY, AUGUST 17, 2026

1. ALL ENTRIES MUST BE PICKED UP
2. Arts & Crafts Pick-Up | 9AM - 7PM
3. Floral Department Pick-up | 2PM - 7PM
4. Junior Fair Pick-up | 10AM - 2:30PM
5. Canine Display (Dept 12) | Pick-Up | 10AM - 2PM

ALL ENTRIES

MUST BE DROPPED OFF AND PICKED UP FROM THE SAME BUILDING. WHERE YOU ORIGINALLY DROPPED THEM OFF

ARTS&CRAFT DEPT 4A
DISPLAYED IN BLDG 27 | PG 6

DOMESTIC ARTS & HOBBIES DEPT 4B
DISPLAYED IN BUILDING 29 | PG14

CANINE DISPLAY | DEPT.12 SHOWN IN JR. FAIR
BLDG 27 | PG18

GARDEN & PRODUCE | DEPT 25
DISPLAYED IN BLDG 16 | PG 19

APIARY, BEES & HONEY | DEPT 27
DISPLAYED IN BLDG 30 | PG 24

FLORAL | DEPT 28
DISPLAYED IN BLDG 16 | PAGE 26

JUNIOR FAIR | DEPT 38
DISPLAYED IN BLDG 37 | PG 31

Need a large space for an indoor or outdoor event?

The Cuyahoga County Fairgrounds in Berea, Ohio is your spot! Whether you're planning a Trade Fair, Craft Show, or Festival, we've got you covered. Conveniently located near major highways, our 117-acre site offers 50,000 sq. ft. of indoor exhibit space and parking for 7,500 vehicles. And hey, if you're an RV enthusiast, we've got hookups for electric, water, and sewer. Just give us a shout during office hours for all the juicy details or go to cuyfair.com/fairgrounds/building-rental/

440-243-0090

Office Open MWF 10-3

Cuyahoga County Agricultural Society
PO Box 135 | 164 Eastland Road | Berea, OH 44017





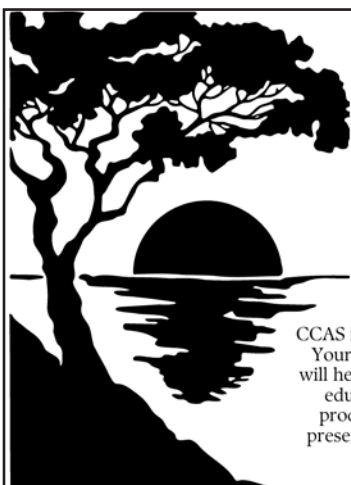
Join Our Growing Community!

The Cuyahoga County Farm Bureau supports Ohio's farmers and promotes Ohio agriculture. Our vision is to forge a partnership between farmer and consumers that meets consumer needs and ensure agricultural prosperity in a global marketplace.

The Farm Bureau encourages dialogue about food, promotes youth and leadership development, advocates for care of animal, and fosters attention to the environment through our Communications, Organization and Public Policy committees.

You don't have to be a farmer to be a Farm Bureau Member. Get involved in an organization where members work to improve life for themselves and their communities.

CUYAHOGA COUNTY FARM BUREAU
8460 RIDGE ROAD | NORTH ROYALTON, OH 44133
440-877-0706 | GROWWITHFB.ORG



INCLUDE THE CUYAHOGA COUNTY AGRICULTURAL SOCIETY IN YOUR WILL

CCAS is a 501c3, not-for-profit organization. Your generous donation and forethought will help us carry out our mission to exhibit, educate and demonstrate agribusiness products and techniques from the past, present and future in a festive atmosphere for all generations.

BEREA FLEA Market!

EVERY SATURDAY & SUNDAY
OUTSIDE AT THE CUYAHOGA COUNTY FAIRGROUNDS

OPENS 6AM 'TIL 1 PM FOR ALL
PUBLIC ADMISSION \$1 • OVER 200 VENDORS

VENDORS

Saturday \$7 • Sunday \$14

25 ft. frontage • Setup starts as early as 6am



For more Info Call:

440-305-0061 - Cell 440-243-0090 - Office

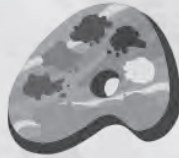
Join Us!

Get your Cuyahoga County Agricultural Society membership today! To become a member, visit the Fairboard Office and purchase your membership for \$25 per person. Please note that you must be at least 18 years old and a resident of Cuyahoga County to join. As a member, you'll enjoy reduced fees for special programs and can cast your vote in the annual election in October. Don't wait - the final day to purchase your membership is **August 16th, which is the last day of the fair.**

Remember to bring ID and proof of age and address with you.

To become a candidate for director-At-Large you must be 21 years of age and have a valid membership and fill out the application.





ARTIST FOR A DAY

PAINT - YOUR - OWN POTTERY



SCAN FOR
OUR EVENTS



POTTERY PAINTING
CLAY & STONEWARE
CANVAS PAINTING
CLASSES | STUDIO EVENTS
PARTIES & MORE!

WALK-INS WELCOME!

CONGRATULATIONS
CUYAHOGA COUNTY FAIR!!



28649 LORAIN ROAD • NORTH OLMSTED

artistforaday.com

Cuyahoga County Agricultural Society Partnership Scholarships

The Board of Directors-At-Large of the Cuyahoga County Agricultural Society is proud to announce three scholarships available this year. They are:

Cuyahoga County Agricultural Society Scholarship:

\$1,000.00 Scholarship available to graduating high school seniors and current college students with one or more years of participation in the Cuyahoga County Fair.

The Jim Mikasina Law Enforcement Scholarship:

\$500.00 Scholarship available to graduating seniors pursuing a career in law enforcement.

The Partnership Scholarship with the Cuyahoga County Farm Bureau:

\$1,000.00 Scholarship available to graduating seniors pursuing a career in an agriculture related field in an Ohio vocational school or college.

All applications are available online at www.cuyfair.com.

Please visit website for more information.
Or Partner scholarship also available at www.ofbf.org.

Deadline for all scholarships is July 1, 2026.



BUCKEYE STATE SANCTIONED

PEDAL TRACTOR PULL



AT THE

CUYAHOGA COUNTY FAIR

TUESDAY, AUG 11, 2026

AGES 4-11: FREE

**AGES 12 & OVER:
\$10.00**

**REGISTRATION FROM 1PM TO 2PM
EVENT BEGINS AT 2PM**



**No Need To Bring Your
Own Pedal Tractor.
One will be provided by
the event.**

Sponsored By:





**Cuyahoga County
Agricultural Society**
P.O. Box 135
Berea, Ohio 44017

