

# Official Premium 2022 - 125th Year! - CUYAHOGA COUNTY FAIR AND EXPOSITION

Tuesday through Sunday  
August 9, 10, 11, 12, 13, 14, 2022

**Cuyahoga County Agricultural Society**

**Mailing Address:** P.O. Box 135 • Berea, Ohio 44017

**Main Parking Area:** 19201 East Bagley Road • Middleburg Hts., Ohio 44130

**Gate 1, Off Eastland Road:** 164 Eastland Road • Berea, Ohio 44017

**(440) 243-0090 • Fax (440) 243-0344 • [www.cuyfair.com](http://www.cuyfair.com)**

## Table of Contents

Admission Fees.....	5	Garden & Produce .....	19
Antiques.....	11	General Rules.....	4
Arts & Crafts .....	6	Girl Scouts - GSNEO .....	34
Art Work.....	9	Handcraft .....	6
Bees & Honey .....	25	Herb Garden Display .....	20
Boy Scouts of America .....	34	Hobby Show .....	16
Camping & Parking.....	5	Home Canning.....	20
Canine Display.....	18	Home Garden Vegetable and/or Display.....	19
Community Garden Competition .....	19	Junior Fair Department.....	31
Culinary.....	14	Junior Fair Officials .....	31
Dahlia Show.....	26	Junior Fair Dance .....	32
Decorated Christmas Tree.....	17	Machine Sewing .....	8
Design Arrangements - Standard Division .....	30	Membership, Cuyahoga County Agricultural Society .....	4
Directors-At-Large & Officers .....	3	Ohio Fair Schedule.....	2
Domestic Arts & Hobbies .....	14	Payment of Premiums & Awards.....	5
Entry Requirements - Exhibitors.....	5	Photography .....	10
Fairy Gardens .....	31	Scholarship.....	inside back cover
Flea Market .....	16, 39	Senior Citizen Gardener .....	24
Floral Department .....	26	Specimen Blooms.....	28
4-H Clubs .....	33	Table Setting .....	18
4-H Animal Science Auction.....	33	Vegetables .....	22
Fruit.....	21	Wine & Beer (Homemade) .....	15



# 2022 Ohio Agricultural Fair Schedule

Information on All Ohio Events - 1-800-282-5393



## County Fair & Location ..... Dates

### JUNE FAIRS

Paulding County Fair (Paulding) .....	June 11-18
Pickaway County (Circleville) .....	June 18-25
Putnam County (Ottawa) .....	June 20-25
Harrison County Fair .....	June 20-25

### JULY FAIRS

Marion County (Marion) .....	July 4-9
Clinton County (Wilmington) .....	July 9-16
Madison County (London) .....	July 9-16
Adams County (West Union) .....	July 10-16
Lawrence County (Proctorville) .....	July 9-16
Logan County (Bellefontaine) .....	July 10-16
Trumbull County (Cortland) .....	July 12-17
Montgomery County (Dayton) .....	July 10-16
Lucas County (Maumee) .....	July 11-17
Jackson County (Wellston) .....	July 14-23
Franklin County (Hilliard) .....	July 18-24
Crawford County (Bucyrus) .....	July 18-23
Fayette County (Washington C.H.) .....	July 18-23
Perry County (New Lexington) .....	July 18-23
Ottawa County (Oak Harbor) .....	July 18-24
Warren County (Lebanon) .....	July 18-23
Carroll County (Carrollton) .....	July 18-24
Clark County (Springfield) .....	July 22-29
Knox County (Mt. Vernon) .....	July 24-30
Butler County (Hamilton) .....	July 24-July 30
Clermont County (Owensville) .....	July 24-July 30
Shelby County (Sidney) .....	July 24-July 30
Union County (Marysville) .....	July 24-July 30
Seneca County (Tiffin) .....	July 25-31
Vinton County (McArthur) .....	July 23-July 30
Summit County (Tallmadge) .....	July 24-31
Lake County (Painesville) .....	July 24-31
Ohio State Fair (Columbus) .....	July 27-August 7
Pike County (Piketon) .....	July 29-August 6

### JULY/AUGUST FAIRS

Preble County (Eaton) .....	July 30-August 6
Auglaize County (Wapakoneta) .....	July 31-Aug 6
Greene County (Xenia) .....	July 31-Aug 6
Gallia County (Gallipolis) .....	Aug 1-6
Columbiana County (Lisbon) .....	August 1-7
Medina County (Medina) .....	Aug 1-7
Wood County (Bowling Green) .....	August 1-8

### AUGUST FAIRS

Hamilton County (Carthage) .....	Aug 11-14
Champaign County (Urbana) .....	Aug 4-12
Athens County (Athens) .....	Aug 5-13
Ross County (Chillicothe) .....	Aug 6-13
Hartford Independent (Licking County) .....	Aug 7-13
Richland County (Mansfield) .....	Aug 7-13
Holmes County (Millersburg) .....	Aug 8-113
Scioto County (Lucasville) .....	Aug 8-13
Cuyahoga County (Berea) .....	Aug 9-14

Attica Independent (Seneca County) .....	Aug 9-13
Ashtabula County (Jefferson) .....	Aug 9-14
Erie County (Sandusky) .....	Aug 9-14
Henry County (Napoleon) .....	Aug 11-18
Mercer County (Celina) .....	Aug 12-18
Miami County (Troy) .....	Aug 12-18
Muskingum County (Zanesville) .....	Aug 14-20
Huron County (Norwalk) .....	Aug 15-20
Meigs County (Pomeroy) .....	Aug 15-20
Jefferson County (Smithfield) .....	Aug 14-21
Allen County (Lima) .....	Aug 19-27
Darke County (Greenville) .....	Aug 19-27
Defiance County (Hicksville) .....	Aug 20-27
Monroe County (Woodsfield) .....	Aug 22-27
Lorain County (Wellington) .....	Aug 21-28
Portage County (Randolph) .....	Aug 23-28
Sandusky County (Fremont) .....	Aug 23-28

### AUGUST/SEPTEMBER FAIRS

Noble County (Caldwell) .....	Aug 28-Sept 3
Morrow County (Mt Gilead) .....	Aug 29 -Sept 5
Stark County (Canton) .....	August 30-Sept 5
Hancock County (Findlay) .....	August 31-Sept 5
Richwood Independent (Union County) .....	August 31-Sept 5
Mahoning County (Canfield) .....	August 31-Sept 5
Richwood Independent (Union County) .....	August 31-Sept 5
Van Wert County (Van Wert) .....	August 30-Sept 5
Geauga County (Burton) .....	August 31-Sept 5

### SEPTEMBER FAIRS

Fulton County (Wauseon) .....	Sept 2- 8
Washington County (Marietta) .....	Sept 3-6
Highland County (Hillsboro) .....	Sept 4-10
Morgan County (McConnelsville) .....	Sept 6-10
Belmont County (St. Clairsville) .....	Sept 5-11
Hardin County (Kenton) .....	Sept 6-11
Albany Independent (Athens County) .....	Sept 7-11
Hocking County (Logan) .....	Sept 12-17
Wayne County (Wooster) .....	Sept 10-15
Williams County (Montpelier) .....	Sept 10-15
Guernsey County (Old Washington) .....	Sept 12-18
Wyandot County (Upper Sandusky) .....	Sept 12-17
Bellville Independent (Richland County) .....	Sept 14-17
Delaware County (Delaware) .....	Sept 17-24
Ashland County (Ashland) .....	Sept 18-24
Tuscarawas County (Dover) .....	Sept 19-25
Brown County (Georgetown) .....	Sept 26-Oct 1

### SEPTEMBER/OCTOBER FAIRS

Barlow Independent (Washington Cty) .....	Sept 22-25
Coshocton County (Coshocton) .....	Sept 30-Oct 6

### OCTOBER FAIRS

Loudonville Independent (Ashland County) ...	Oct 4-8
Fairfield County (Lancaster) .....	Oct 9-15

\* = Harness Racing

# The Cuyahoga County Agricultural Society

## Officers and Directors-At-Large

### OFFICERS

Joanne Scudder ..... *President*  
 Carl Cooley ..... *Vice President*  
 David Stephan ..... *Secretary*  
 Gail Royak-Wind ..... *Treasurer*

### EXECUTIVE COMMITTEE

Joanne Scudder, *Chairman*  
 Gail Royak-Wind, David Stephan, Carl Cooley

### DIRECTORS-AT-LARGE

TERM EXPIRES 2022

Holly Everhart, *Berea*  
 Jeff Dick, *Bedford*  
 James Lewandowski, *Parma*  
 Joanne Scudder, *Brecksville*  
 Bob Sculac, *Olmsted Falls*

### DIRECTORS-AT-LARGE

TERM EXPIRES 2023

John Burke, *North Royalton*  
 Dennis Eck, *Strongsville*  
 Tim Fowler, *North Royalton*  
 David R. Stephan, *Cleveland*

### DIRECTORS-AT-LARGE

TERM EXPIRES 2024

Diane Barton, *Parma*  
 Carl Cooley, *North Olmsted*  
 Gail Royak-Wind, *Brook Park*  
 Tom Sabrey, *Strongsville*

### EX-OFFICIO DIRECTORS

County Superintendent of Schools  
 Cuyahoga County Extension Agents  
 Cuyahoga County Executive

### HONORARY DIRECTORS

Janet L. Schubert  
 Joyce Kish  
 Stanley Trupo  
 Dennis Kopy

Our premium book now has two sections;  
 General and Animal.  
 If you need the General entries section,  
 please stop in or call the office at  
**(440) 243-0090**

### DEPARTMENT AND DIRECTOR-AT-LARGE

Administration ... Dave Stephan  
 Admissions ..... John Burke  
 Apiary ..... Dennis Eck  
 Arts & Crafts ... Jim Lewandowski  
 Beer & Wine Sales ... Dennis Eck  
 Buildings, Grounds,  
 Horse Barn Rentals ... Bob Sculac  
 Campgrounds ..... Bob Sculac  
 Canine ..... Holly Everhart  
 Cattle ..... Carl Cooley  
 Domestic Arts &  
 Hobbies ..... Jim Lewandowski  
 Draft Horses ..... Dennis Eck  
 Draft Ponies ..... Dennis Eck  
 Entertainment: Grandstands  
 & Grounds ..... Jeff Dick  
 Fair Vendors &  
 Amusements ..... Diane Barton  
 Fair Veterinarian ... Carl Cooley  
 Fire ..... Tim Fowler  
 Flea Market ..... Bob Sculac  
 Floral ..... Tom Sabrey  
 Garden Produce ... Tom Sabrey  
 Goats ..... Carl Cooley  
 Harness Racing, Horse  
 & Pony Show ..... Gail Wind  
 Home & Hobby ... Jim Lewandowski  
 Horse Barns ..... Dennis Eck  
 Junior Fair ..... Holly Everhart  
 Legal ..... Dave Stephan  
 Maintenance ..... Carl Cooley  
 Media-Advertising ... Tim Fowler  
 Office ..... Dave Stephan  
 Parking ..... Tim Fowler  
 Poultry ..... Tom Sabrey  
 Premium Book ... Martha Wiley

Rabbits & Cavies ... Tom Sabrey  
 Sheep ..... Tom Sabrey  
 Special Displays . Joanne Scudder  
 Sponsorship ..... Holly Everhart  
 Sustainability/  
 Energy Ctr. .... Joanne Scudder  
 Swine ..... Tim Fowler  
 Utilities ..... Carl Cooley

### COMMITTEES & CHAIR

Ambassador  
 Contest ..... Diane Barton  
 Audit ..... Bob Sculac  
 Budget ..... Bob Sculac  
 Grounds  
 Beautification ..... Tom Sabrey  
 Human Resources Joanne Scudder  
 Livestock ..... Carl Cooley  
 Scholarship ..... Diane Barton  
 Safety ..... Joanne Scudder

### STAFF

Financial ..... Susan Bachie  
 Flea Market  
 Manager ..... Jim Lewandowski  
 Front Desk  
 Coordinator ..... Martha Wiley  
 Grounds  
 Superintendent ..... Barry Pettit

### SUPPORT

4H Animal Auction  
 ..... Dave & Joyce Peth  
 Legal Consul ... Greg Sponseller  
 OSU Extension  
 Educator 4H ..... Robin Stone

## Outlined History of the Cuyahoga County Agricultural Society

- Ohio & Erie Canals in 1825 - Cleveland became established as hub for moving agricultural products.
- County Agricultural Society - 1829 Fair on Public Square - Silk worm production was featured.
- 1800's Fair in Kinsman Road area and then to Glenville. As big as a State Fair.
- Cuyahoga: Leader in poultry, table grapes, butter and cheese.
- Three Fairs in the late 1800's - Chagrin Falls, Dover Center and Berea.
- Western Cuyahoga County Agricultural Society in Berea: East Cuyahoga Fair in Chagrin Falls.
- 1871 saw ox carts and ox cart pulls and races.
- 1909 Cuyahoga led State in potato production - the concrete grandstands built.
- County Extension work starting in 1912 - 1918 first appearance of Boys & Girl Clubs at Fairs.
- Berea was the first fairgrounds to have permanent outdoor lights installed - 1914.
- 1925 - Ornamental ironwork ARCH was built as "triumphal arch" at Gate 1.
- Better transportation swung the pendulum in favor of Berea so Chagrin Falls Fair ceased operation in 1928.
- Fair temporarily suspended. 1932 Market Crash. Fair cancelled in 1942-43 during War years.
- Electrical upgrades done in 2004: Existing grandstands built in 2008.
- Quintessential men and women from the area served as officers and leaders of the Cuyahoga County Agricultural Society over the last one hundred and twenty-one years. A partial list of predominate names include: Richardson, Boswell, Mastick, Aldrich, Biddulph, Saesel, Crawford, Gott, Jennings, Richards, Ward, Wing, Koster, Lukas Jr, Jones, Glendenning, Lehman, Cavalier, Walters and thousands of others.
- Counting all the Fairs held in Cuyahoga County we can celebrate over 188 years in existence with 121 years at the present location.

Resource: *Men of Grit and Greatness* by W.F. Holzworth



*The Cuyahoga County Council holds the deed to the fairgrounds and the State of Ohio empowers the Agricultural Society to operate the grounds providing an annual county fair is held. Funding for the operation of the fairgrounds is generated by the Society via the fair and the rentals of the grounds throughout the year. The ODA (Ohio Department of Agriculture) sets the dates for the annual fair and provides rules and regulations for the management of the fair. A constitution and bylaws are established by the Society and assist the Directors-At-Large with the yearly evens as well as the day to day operation. For additional information contact our Office at (440) 243-0090.*

## Cuyahoga County Agricultural Society Memberships, Election and Annual Meeting

Membership in the Agricultural Society is available to any resident of Cuyahoga County, 21 years of age or older. The annual membership fee is \$25.00 and includes four gate passes. By Resolution of the Board of Directors-At-Large, the sale of Memberships for the coming year open December 15 and close on the last day of the fair. Memberships are on sale prior to fair week at the Fair Board Office on Monday, Wednesday and Friday from 10:00 A.M. to 3:00 P.M. and during fair week at the Board Office daily from 10:00 A.M. until 10:00 P.M.

Any member of the Cuyahoga County Agricultural Society in good standing may declare his or her candidacy for the office of Directors-At-Large by filing with the Secretary of the Society a petition signed by ten or more members of the Society, at least 7 days before the annual election of Directors-At-Large is held. Blank petitions for this purpose shall be obtained from the Secretary.

The Annual Meeting and election of Directors-At-Large by ballot by resolution of the Board has been fixed as the **first Saturday in October**. Each member will receive a letter, two weeks prior to the annual meeting, specifying time, date and location of balloting and the annual meeting. The location of said meeting and Election shall be the Fair Board Office in Berea, Ohio between the hours of 10:00 A.M. and 2:00 P.M. or as announced.

## General Rules

1. NO PERSON will be permitted to:
  - A. Sell or distribute free, any merchandise
  - B. Post or display signs
  - C. Distribute handbills or advertising material
  - D. Make solicitations of any nature on the Fairgrounds except in contracted Vendor rented spaces.
2. Smoking is NOT permitted in any barn and/or exhibition building.
3. DOGS or other PETS are NOT permitted on the Fairgrounds except for Assistance Animals.
4. Alcoholic beverages may NOT be brought into the fairgrounds.
5. Bikes, Skateboards, Roller Blades (Inline Skates), Roller Skates, Motorized and other Scooters, ATV's and/or other similar & wheeled devices are NOT permitted on the Fairgrounds.
6. LASER pens, pointers or any other Laser devices are NOT permitted on the Fairgrounds.
7. We reserve the right to inspect all packages and containers.
8. IT IS ILLEGAL TO KNOWINGLY CARRY A FIREARM, DEADLY WEAPON OR DANGEROUS ORDNANCE ANYWHERE ON THESE PREMISES. THIS PROHIBITION APPLIES TO ALL PERSONS, INCLUDING CONCEALED HANDGUN LICENSE OWNERS.
9. The Cuyahoga County Agricultural Society assumes no responsibility for damage to or loss of parked vehicles or personal property contained within parked vehicles.
10. Drones-UAV's (Unmanned Aerial Vehicles) are not permitted on or above the fairground property without prior written permission from the fairboard.

## ADMISSION AND PARKING

FREE PARKING EVERY DAY!

### FAIR HOURS:

Tuesday, Wednesday, Thursday, Friday, 12:00 Noon to 11:00 PM

Saturday, 10:00 AM to 11:00 PM

Sunday, 12:00 Noon to 10:00 PM

(Exhibit animals will be released starting at 5 PM on Sunday)

Commercial Buildings close at 10 PM **DAILY**

### ADVANCE TICKET SALES -

Must be purchased in Fair Office by Friday, August 5th.

5 Daily Admissions . . . . . \$25.00

**DAILY ADMISSION -** Admission tickets and passes **DO NOT** include ride privileges. Ride Wrist Bands will be available at the Prime Time ticket booths inside the fairgrounds.

### GENERAL ADMISSION

Children - 3 Years and Under . . . . . Free Daily

Adult - 4 Years and Up. . . . . \$10.00

### DAILY SPECIALS

Tuesday . . . . . Senior Day \$2.00 Admission All Day

Veteran's Day \$2.00 Admission All Day

*Veterans MUST show proper ID (DD-214, A.L. Card, VFW card or Armed Forces Symbol on Driver's License)*

Kids Day \$2.00 Admission All Day

Sunday. . . . . General Admission prices

All Gate Passes, Work Passes, Exhibitors Tickets, Courtesy Passes and General Admission tickets **do not** include ride privileges.

### ALL VEHICLES MUST BE OFF THE MIDWAY BY:

Tuesday, Wednesday, Thursday, Friday, & Sunday - 11:45 AM;

Saturday - 9:45 AM

**COMMERCIAL BUILDINGS CLOSE AT 10 PM NIGHTLY**

## CAMPING AND PARKING

Fair Week Only - *By Reservations Only*

Camper/Motorhome Parking, Electric Only . . . . . \$140.00

Camper/Motorhome Parking, Water & Electric . . . . . \$165.00

Camper/Motorhome Parking, Water,

Electric & Sewer. . . . . \$220.00

## EXHIBITORS ENTRY REQUIREMENTS

1. **EXHIBITOR'S TICKET**- All exhibitors in Open Classes must purchase an Exhibitor's ticket. The cost depends on entry date. All entries received postmarked by July 15 - \$10.00. All entries postmarked between July 16 and the close of entries on July 29 - \$12.00. Only one exhibitor allowed per entry ticket and the ticket includes two Fair General Admissions. As an option, you may purchase an Exhibitor Ticket for \$35 which includes 6 daily General Admissions to the Fair. See Entry Forms for details. **Note:** The purchase of an Exhibitor Ticket does not constitute a membership in the Cuyahoga County Agricultural Society and further does not entitle the Purchaser to vote at the Annual Election of Membership Meetings.
2. **ENTRY FEES** - No added entry fees are required in the Arts & Crafts, Garden Produce or Floral Departments. See the Livestock and Horse Show Premium Lists covering entry fees for all animals exhibited.
3. **ENTRY FORMS** in all departments **MUST** be delivered to the Fair Office or postmarked no later than July 29, 2022 except in certain Breeds of Cattle.
4. Directors-At-Large, Superintendents and their assistants are not permitted to exhibit in their respective departments. Fairboard office personnel are not permitted to exhibit in any department of the Fair.

5. The Judge may require proof, if deemed necessary, as to any doubtful or disputed point.
6. All exhibitor's articles and animals must remain on exhibit, no substitutions, until closing time each day, except on Sunday, the last day of the Fair. On Sunday evening livestock will be released at the discretion of the Board of Directors-At-Large.
7. Directors-At-Large and/or Superintendents of the respective departments are in charge of assigning space and/or stalls to Exhibitors.
8. No person shall be informed of the number or kinds of entries, except the Directors-At-Large.
9. **SUBMIT YOUR ENTRIES** on time. Class descriptions should be copied exactly as they appear in the premium book. Entries made will not be scratched and Entry Fees will not be refunded except in case of sickness or accident.
10. The Fairboard reserves the right to interpret its own rules and regulations and determine through its Directors-At-Large all matters and differences in regards thereto. A grieved party may enter a protest, signed by three persons, with the Secretary, who shall lay the same before the Board for their decision at the next session, from which there shall be no appeal.
11. Make checks payable to **CUYAHOGA COUNTY FAIR**. Your check, money order, or **charge card information** must accompany your entry form. Mail your entry form and check to:

Cuyahoga County Fair

P.O. Box 135 • Berea, Ohio 44017

### 12. FAIR OFFICE HOURS:

Open Monday, Wednesday & Friday

Year Round: 10 A.M. - 3 P.M.

Closed weekends until July 29

July 11 thru August 5 - 9 A.M. - 5 P.M.

August 8 thru August 14 - 9 A.M. - 10 P.M.

August 15 thru August 19 - 9 A.M. - 5 P.M.

13. Any Exhibitor who wins over \$600 in premiums must complete a W-9 form before checks are distributed in compliance with IRS regulations. A 1099 MISC will be issued to those exhibitors.
14. For rules and regulations not included in the above, Rules and Regulations of the Ohio Department of Agriculture shall apply.

## PAYMENT OF PREMIUMS and AWARDS

If the proceeds of the Fair, after paying expenses, are not sufficient to pay the Premiums in full, they will be paid on a prorated basis from the funds available.

No premiums will be paid on articles unless they are listed in the Premium List. Other articles may be exhibited, and if deemed worthy by the Board, may be placed on the Premium List the following year.

No person is to interfere with the judges during their examination of stock or other articles. Any Exhibitor interfering shall forfeit his or her premium. Where there is but one animal or article in a class, the Judge may award first, second, or no premium, if he or she deems it undeserving. **Entry tags or ribbons have no value as to the payment of premiums, as premiums are paid only by the records of the Judges' books from which there shall be no appeal.**



# OPEN CLASS GENERAL ENTRY RULES

1. To exhibit you must purchase an Exhibitor's Ticket which includes two complimentary gate admissions. Your one Exhibitor's Ticket permits you to exhibit in all Open Class Divisions and/or Departments of the Cuyahoga County Fair.
2. There are no Class Entry Fees in open class departments.
3. Make check or money order payable to Cuyahoga County Fair and mail with your Entry Form to:

**Cuyahoga County Fair**  
P.O. Box 135 • Berea, Ohio 44017

Your Exhibitor Ticket will be mailed to you.

**Exhibitor Tickets for Online entries will be held with your entry tags.**

**Your Entry Tags will be held for you at each exhibit building.**

4. The Entry Requirements governing the Cuyahoga County Fair apply to open class departments.
5. Contestants will be responsible for proper classification.
6. No premium will be awarded if exhibit is considered unworthy by the judge.
7. PLEASE read additional Entry Rules listed under each section.
8. Unclaimed premium checks will be considered a donation to the Cuyahoga County Agricultural Society.
9. PLEASE direct questions regarding entering to the Fairboard Office 440-243-0090 or FairGuy@yahoo.com.  
• **The judge's book is the official guide in the awarding of premiums, not the placement of ribbons.**
10. A senior citizen is anyone 65 or older.

**ENTRY DEADLINES:** Postmarked by July 15th - Early Entry (\$10) - July 29 - Entry Deadline (\$12) - *NO exception for late entries.*

**THERE ARE NO ENTRY FEES IN JUNIOR FAIR EXHIBITS**

## ARTS AND CRAFTS DEPARTMENT 4-A

### BUILDING 27

**JAMES LEWANDOWSKI**  
Director-At-Large  
*FairGuy01@yahoo.com*

### SECTIONS

Handcraft • Sewing • Art Work • Photography  
Video • Antiques • Weapons

### IMPORTANT ARTS & CRAFTS DATES - DEPT 4-A ONLY

Fri., July 15 - Early Entry Forms Due  
Fri., July 29 - Entry Forms Due  
Thurs., Aug. 4 - Entries 6:00 P.M. - 8:00 P.M.  
Fri., Aug. 5 - Entries 9:00 A.M. - 8:00 P.M.  
Sat., Aug. 6 - Entries 9:00 A.M. - 4:00 P.M.  
Mon., Aug. 15 - Entry Pick Up - 9:00 A.M. - 7:00 P.M.

## HANDCRAFT SECTION 100

### ENTRY RULES

1. Items previously exhibited in this Fair are not eligible.
2. All exhibits must be solely the work of the exhibitor. Purchased articles are not permitted.
3. Exhibitors are limited to a single item per entry ticket unless otherwise specified under the class. Limit of 3 entries per class.
4. Criteria for judging handcraft exhibits:
  - Workmanship
  - Suitability of materials, colors, design
  - Practicability, intended use
  - Cleanliness, neatness
5. In an entry with multiple techniques, (i.e. cross stitch and hardanger combined) put the entry in the class that contain the most technique in the item.
6. The design on all handcraft pictures must be no larger than 22" x 28" except where otherwise specified.
7. In Classes 1 through 161, Honorable Mentions may be awarded where deemed worthy.
8. An item that has a specific class already listed must be entered in that class — **NOT UNDER SPECIMEN OTHER THAN ABOVE.**
9. See **General Entry Rules.**

**HANDCRAFT (continued)****CROCHET****Premiums: 1st - \$4.00; 2nd - \$3.00; 3rd - \$1.00**Best of Class - Rosette**Class**

- 1 Tablecloth (standard or banquet)
- 2 Bedspread (twin or full size)
- 3 Handbag
- 4 Stole, shawl, poncho or cape
- 5 Sweater
- 6 Baby afghan or shawl
- 7 Baby Garments (2 or 3 piece set)
- 8 Doily
- 9 Pillow
- 10 Rug
- 11 Doll Dress
- 12 Specimen other than above
- 13 Specimen made by a senior citizen

**COUNTED CROSS STITCH (NOT STAMPED)****Premiums: 1st - \$3.00; 2nd - \$2.00; 3rd - \$1.00;**Best of Class - Rosette**Class**

- 23 Miniature specimen, maximum size 2" x 3"
- 24 Picture design under 6" x 8"
- 25 Picture design 6" x 8" and over worked on 11 or 14 Aida and inter-locked fabrics
- 26 Picture design 6" x 8" and over worked on 16 or 18 Aida and inter-locked fabrics
- 27 Picture design 6" x 8" and over worked on linen and single-thread fabrics
- 28 Sampler (not picture) worked on Aida and interlocked fabrics
- 29 Sampler (not picture) worked on linen and single thread fabrics, no more than 3 stitches or stitch variations
- 30 Sampler (not picture) worked on linen and single thread fabrics, 4 or more stitches or stitch variations
- 31 Afghan
- 32 Pillow
- 33 Waste canvas specimen
- 34 Specimen other than above
- 35 Holiday picture or sampler
- 36 Holiday ornaments (maximum of 3)
- 37 Holiday specimen other than above

**OTHER HANDIWORK****Premiums: 1st - \$3.00; 2nd - \$2.00; 3rd - \$1.00;**Best of Class - Rosette**Class**

- 38 Tatting
- 39 Smocking
- 40 Candlewicking
- 41 Rag Rugs
- 42 Counted Thread (no cross stitch, hardanger or canvas) (Duplicate stitch is entered in this class)
- 43 Weaving

**ARTICLE BY A MAN - NEEDLEWORK****Premiums: 1st - \$3.00; 2nd - \$2.00; 3rd - \$1.00****Class**

- 44 Specimen

**HANDCRAFT (continued)****KNITTING****Premiums: 1st - \$4.00; 2nd - \$3.00; 3rd - \$1.00**Best of Class - Rosette**Class**

- 49 Adult sweater, solid color, variegated or self-striping yarn
- 50 Adult sweater, color work (e.g. Fair Isle, entrelac, mosaic, etc.)
- 51 Adult sleeveless vest, shell, or tank top
- 52 Shawl, stole, shrug
- 53 Poncho or cape
- 54 Baby garments, 2 or 3 piece set
- 55 Baby sweater (newborn to 2 years)
- 56 Child's sweater (2 years and over)
- 57 Socks or slippers, one pair
- 58 Scarf or cowl
- 59 Hat
- 60 Mittens, mitts, or gloves
- 61 Purse or bag
- 62 Knit item with beads
- 63 Knit item, felted
- 64 Knit by Jr. under 12 years old
- 65 Specimen other than above  
See class 117 for knitted afghan  
See class 130 for knitted toys

**NEEDLEPOINT****Premiums: 1st - \$3.00; 2nd - \$2.00; 3rd - \$1.00**Best of Class - Rosette**Class**

- 70 Picture, framed size up to 22" x 28" (no more than 3 different stitches)
- 71 Picture, framed size up to 22" x 28" (3 or more different stitches)
- 72 Miniature specimen - maximum size 2" x 3"
- 73 Plastic canvas specimen
- 74 Specimen by a senior citizen
- 75 Specimen other than above

**EMBROIDERY OR CROSS STITCH-STAMPED****Premiums: 1st - \$3.00; 2nd - \$2.00; 3rd - \$1.00**Best of Class - Rosette**Class**

- 80 Tablecloth
- 81 Silk ribbon embroidery
- 82 Picture or sampler - framed size up to 22" x 28"
- 83 Punch needle embroidery
- 84 Crewel (worked with yarn), picture
- 85 Crewel (worked with yarn), pillow
- 86 Specimen other than above
- 87 Specimen by a senior citizen

**HANDMADE FELT****Premiums: 1st - \$3.00; 2nd - \$2.00; 3rd - \$1.00****Class**

- 90 Needle Felt
- 91 Wet Felt
- 92 Knitted or Crochet Felt



The Cuyahoga  
County Agricultural  
Society sponsors of  
the Cuyahoga County  
Fair invite you to visit  
our Web-Site.

Web-Site Address:  
[www.cuyfair.com](http://www.cuyfair.com)

**HANDCRAFT (continued)****QUILTING***Names should be covered from view for judging*Best of Class - Rosette**Class**

101	Embroidered quilt (cross stitch or outline)	\$10.00	5.00	2.00
102	Applique quilt	\$10.00	5.00	2.00
103	Pieced and tied quilt	\$10.00	5.00	2.00
104	Cotton patch work quilt	\$10.00	5.00	2.00
105	Specimen, junior bed size quilt	\$10.00	5.00	2.00
106	Specimen, crib quilt	\$5.00	3.00	1.00
107	Machine quilted wall hanging up to 48" x 48"	\$3.00	2.00	1.00
108	Hand quilted wall hanging up to 48" x 48"	\$3.00	2.00	1.00
109	Hand quilted clothing	\$3.00	2.00	1.00
110	Quilted pillow	\$3.00	2.00	1.00
111	Specimen other than above	\$3.00	2.00	1.00
112	Specimen machine quilted by other	\$5.00	3.00	1.00

**AFGHANS***Premiums: 1st - \$5.00; 2nd - \$3.00; 3rd - \$2.00*Best of Class - Rosette**Class**

113	Crochet, one piece, one or more colors
114	Crochet, sections or shapes joined together
115	Crochet, afghan stitch, not embroidered
116	Crocheted and embroidered
117	Hand knitted
118	Machine knitted
119	Specimen made by a senior citizen

**HOOKED WORK***Premiums: 1st - \$7.00; 2nd - \$3.00; 3rd - \$2.00*Best of Class - Rosette**Class**

120	Latchet rug or hanging
121	Colonial-traditional rug, tapestry
122	Colonial-traditional rug
123	Colonial-traditional rug, primitive
124	Colonial-traditional, framed specimen (no size limit)
125	Colonial-traditional, unframed specimen (no size limit)
126	Colonial-traditional specimen other than above

**HANDMADE TOYS - NEEDLEWORK***Premiums: 1st - \$3.00; 2nd - \$2.00; 3rd - \$1.00*Best of Class - Rosette**Class**

130	Knitted
131	Crocheted
132	Stuffed or quilted, machine or hand sewn
133	Needlepoint
134	Christmas ornaments (max. of 3) not counted cross stitch
135	Christmas figurines/decorations (max. of 3)
136	Christmas figurines/decorations, more than 3 (not to exceed 15" in any direction)

**BASKETRY***Premiums: 1st - \$3.00; 2nd - \$2.00; 3rd - \$1.00*Best of Class - Rosette**Class**

140	Miniature specimen, under 4" diameter
141	Over 4" up to under 10" diameter
142	10" and over (diameter)

**HANDCRAFT (continued)****MISCELLANEOUS CRAFT SPECIMEN***Premiums: 1st - \$3.00; 2nd - \$2.00; 3rd - \$1.00***Class**

145	Stencil (on fabric)
146	Fabric Painting
147	Embellishment
148	Felt (not handmade)
149	Tole
150	Iris Folding
151	Beadwork
152	Stained Glass
153	Polymer Clay
154	Gift Wrap Specimen
155	Decorated Wreath/Swag
156	Scrap Book Specimen (one page)
157	Handmade Soap
158	Painted Rock
159	Book Art / Folding
160	Jewelry, Other
161	Other Specimen

## MACHINE SEWING SECTION 200

**ENTRY RULES**

1. Please bring your entry on a hanger.
2. Sewing instructors and professional sewers are ineligible to compete in the machine sewing classes.
3. Exhibitors limited to one item per entry ticket unless otherwise specified. Limit of three (3) entries per class.
4. Items previously exhibited are ineligible.
5. See **General Entry Rules**.

**BEST OF SHOW in Machine Sewing \$25.00***Premiums: 1st - \$7.00; 2nd - \$4.00; 3rd - \$3.00***Class**

200	Lady's suit with pants or skirt
201	Lady's blazer or jacket
202	Bridal gown with head piece
203	Men's clothing (up to 3 pieces)
204	Lady's dress
205	Lady's outfit (no suits) up to 3 pieces
206	Lady's formal dress
207	Heavyweight coat
208	Lightweight coat
209	Children's clothing - casual - up to 3 piece set
210	Children's clothing - dressy - up to 3 piece set
211	Children's clothing - formal - (i.e. christening gowns) up to 3 piece set
212	Children's sleepwear - up to 3 piece set
213	Adult sleepwear - up to 3 pc. set
214	Doll clothes - up to 3 pc. set
215	Machine quilted clothing
216	Shirt or blouse
217	Specimen made from kit
218	Specimen non-apparel, no toys or quilts
219	Lady's slacks
220	Lady's skirt
221	Strip pieced specimen
222	Machine embroidery specimen
223	Halloween Costume - Child
224	Halloween Costume - Adult
225	Theatrical Costume - Male Character
226	Theatrical Costume - Female Character
227	Specimen other than above



## ART WORK SECTION 400

### ENTRY RULES

#### NO ANTIQUES PLEASE

1. Limit of two (2) entries per class in Classes 400 through 489.
2. Pictures may be any size up to 48" x 60" including frame.  
**FRAMING IS ENCOURAGED.**
3. ALL entries (classes 400-439) should have wire hanging.  
No poster hangers. Hangings should not be attached to paper backing.
4. Water colors are to be matted.
5. Nudes will be excluded.
6. All exhibits must be solely the work of the exhibitor.
7. All entries must have been completed within the last year.
8. See **General Entry Rules**.

**Best of Show in Art Work- Professional** \$10.00 & Rosette

**Best of Show in Art Work- Amateur** \$10.00 & Rosette

### **PAINTINGS — OIL OR ACRYLIC, AMATEUR**

**Premiums:** 1st - \$5.00; 2nd - \$4.00; 3rd - \$3.00;  
4th - \$2.00; 5th - \$1.00

#### **Class**

- 400 Portrait or figure
- 401 Animal or bird
- 402 Landscape
- 403 Seascape
- 404 Still life
- 405 Specimen (under 18 years of age)
- 406 Specimen

### **WATER COLORS, AMATEUR**

**Premiums:** 1st - \$5.00; 2nd - \$4.00; 3rd - \$3.00;  
4th - \$2.00; 5th - \$1.00

#### **Class**

- 407 Portrait or figure
- 408 Animal or bird
- 409 Landscape
- 410 Seascape
- 411 Still life
- 412 Specimen (under 18 years of age)
- 413 Other than above

### **PASTELS, AMATEUR**

**Premiums:** 1st - \$5.00; 2nd - \$4.00; 3rd - \$3.00;  
4th - \$2.00; 5th - \$1.00

#### **Class**

- 414 Portrait, animal or bird
- 415 Landscape or seascape
- 416 Specimen other than above
- 417 Specimen (under 18 years of age)

### **DRAWINGS, AMATEUR**

**Premiums:** 1st - \$5.00; 2nd - \$4.00; 3rd - \$3.00;  
4th - \$2.00; 5th - \$1.00

#### **Class**

- 418 Charcoal
- 419 Pencil / including ZenTangle
- 420 Ink / including ZenTangle
- 421 Specimen (under 18 years of age)

### **ART WORK (continued)**

### **ABSTRACT ART, AMATEUR (in any of the above mediums)**

**Premiums:** 1st - \$5.00; 2nd - \$4.00; 3rd - \$3.00;  
4th - \$2.00; 5th - \$1.00

#### **Class**

- 422 Specimen

### **MIXED MEDIUM, AMATEUR**

**Premiums:** 1st - \$5.00; 2nd - \$4.00; 3rd - \$3.00;  
4th - \$2.00; 5th - \$1.00

#### **Class**

- 423 Specimen

### **PAINTINGS — OIL OR ACRYLIC, PROFESSIONAL**

**Premiums:** 1st - \$8.00; 2nd - \$5.00; 3rd - \$3.00;  
4th - \$2.00; 5th - \$1.00

#### **Class**

- 424 Portrait or figure
- 425 Animal or bird
- 426 Landscape
- 427 Seascape
- 428 Still life

### **WATER COLORS, PROFESSIONAL**

**Premiums:** 1st - \$8.00; 2nd - \$5.00; 3rd - \$3.00;  
4th - \$2.00; 5th - \$1.00

#### **Class**

- 429 Portrait or figure
- 430 Animal or bird
- 431 Landscape
- 432 Seascape
- 433 Still life

### **PASTELS, PROFESSIONAL**

**Premiums:** 1st - \$8.00; 2nd - \$5.00; 3rd - \$3.00;  
4th - \$2.00; 5th - \$1.00

#### **Class**

- 434 Specimen

### **DRAWINGS, PROFESSIONAL**

**Premiums:** 1st - \$8.00; 2nd - \$5.00; 3rd - \$3.00;  
4th - \$2.00; 5th - \$1.00

#### **Class**

- 435 Specimen

### **ABSTRACT ART, PROFESSIONAL**

*(in any of the above mediums)*

**Premiums:** 1st - \$8.00; 2nd - \$5.00; 3rd - \$3.00;  
4th - \$2.00; 5th - \$1.00

#### **Class**

- 436 Specimen

### **COLLAGE**

**Premiums:** 1st - \$5.00; 2nd - \$4.00; 3rd - \$3.00;  
4th - \$2.00; 5th - \$1.00

#### **Class**

- 437 Specimen by Junior (under 18 years of age)
- 438 Specimen by Adult (18 years of age & over)

### **JUNIOR DIVISION (under 13 years of age)**

**Premiums:** 1st - \$5.00; 2nd - \$4.00; 3rd - \$3.00;  
4th - \$2.00; 5th - \$1.00

#### **Class**

- 439 Specimen, oil, watercolor, pastel, or drawing

**ART WORK** *(continued)***THREE DIMENSIONAL PAINTING**

Premiums: 1st - \$5.00; 2nd - \$4.00; 3rd - \$3.00;  
4th - \$2.00; 5th - \$1.00

(ex. painting on birdhouses, gourds, etc.)

**Class**

440 Specimen

**WOOD**

Premiums: 1st - \$5.00; 2nd - \$4.00; 3rd - \$3.00;  
4th - \$2.00; 5th - \$1.00

**Class**

- 441 Sculpture, 3 dimensional
- 442 Woodworking, under 12" height
- 443 Woodworking, 12" to 60" height
- 444 Wood carving
- 445 Whittling
- 446 Woodburning
- 447 Intrasia

**ENAMELWARE**

Premiums: 1st - \$8.00; 2nd - \$5.00; 3rd - \$3.00

**Class**

- 448 Jewelry
- 449 Bowl
- 450 Specimen other than above
- 451 Specimen, made by a junior (under 18 years of age)

**METAL WORK**

Premiums: 1st - \$8.00; 2nd - \$5.00; 3rd - \$3.00

**Class**

- 452 Wire Dimensional sculpture
- 453 Jewelry
- 454 Specimen other than above
- 455 Specimen made by a junior (under 18 years of age)

**LEATHERCRAFT**

Premiums: 1st - \$3.00; 2nd - \$1.50; 3rd - \$1.00

**Class**

- 456 Purses
- 457 Belts
- 458 Wallets
- 459 Specimen other than listed

**CERAMICS - HAND-BUILT / WHEEL-THROWN**

Premiums: 1st - \$ 5.00; 2nd - \$4.00; 3rd - \$3.00

**Class**

- 484 Figurine or Bust
- 485 Jewelry
- 486 Bowl or Vase
- 487 Plaque
- 488 Other than above
- 489 Specimen by junior (under 18 years of age)

**BLOWN GLASS** *(Maximum of 3 entries per class)*

Premiums: 1st - \$ 5.00; 2nd - \$4.00; 3rd - \$3.00

**Class**

- 490 Bowl
- 491 Drinking Glass
- 492 Goblet
- 493 Lit Piece (lamp, sconce, etc)
- 494 Marble
- 495 Paperweight
- 496 Perfume Bottle
- 497 Vase
- 498 Abstract
- 499 Other than listed

# PHOTOGRAPHY

## SECTION 500

**ENTRY RULES**

1. Limit of one (1) entry per class.
2. Minimum size of prints to be 8" x 10".
3. All prints must be mounted or matted on mat board or foam core of 11" x 14". **ALL OTHERS WILL BE DISQUALIFIED.**
4. Only one print of a subject per class.
5. Color prints in any process are acceptable.
6. Nudes will be excluded.
7. All images must be photographed by the entrant, except for Classes 539.
8. Photograph image should be **NOT** be digitally changed or altered except in Classes 542.
9. Prints must be from past 12 months. Repeats are not acceptable.
10. Frames, Plexiglas or acetate coverings are **NOT** acceptable. Plastic cover sheets are acceptable.
11. If you do not want your name displayed during the fair, tape your entry tag closed at drop off.
12. **See General Entry Rules.**

**Best of Show in Photography**

Color	\$20.00 & Rosette
Black & White	\$20.00 & Rosette

**AMATEUR**

Premiums: 1st - \$5.00; 2nd - \$4.00; 3rd - \$3.00;  
4th - \$2.00; 5th - \$1.00

**Class**

- 500 Portrait or figure of child under 9 (color)
- 501 Portrait or figure of child under 9 (black & white)
- 502 Portrait or figure of child 9 to 17 (color)
- 503 Portrait or figure of child 9 to 17 (black & white)
- 504 Portrait or figure of adult 18 & over (color)
- 505 Portrait or figure of adult 18 & over (black & white)
- 506 Still life (color)
- 507 Still life (black & white)
- 508 Human interest - animal, domesticated (color)
- 509 Human interest - animal, domesticated (black & white)
- 510 Human interest - animal, non-domesticated (color)
- 511 Human interest - animal, non-domesticated (black & white)
- 512 Human interest - (color)
- 513 Human interest - (black & white)
- 514 Landscape (color)
- 515 Landscape (black & white)
- 516 Seascape (color)
- 517 Seascape (black & white)
- 518 Nature (color)
- 519 Nature (black & white)
- 520 Abstract (color)
- 521 Abstract (black & white)
- 522 Architectural Design (color)
- 523 Architectural Design (black & white)
- 524 Non-traditional/Experimental (color)
- 525 Non-traditional/Experimental (black & white)
- 526 Cuyahoga County Fair (color)
- 527 Cuyahoga County Fair (black & white)
- 528 Cuyahoga County Landmark (color)
- 529 Cuyahoga County Landmark (black & white)
- 530 Cleveland Metroparks (color)
- 531 Cleveland Metroparks (black & white)
- 532 Extreme close-up (color)
- 533 Extreme close-up (black & white)

**PHOTOGRAPHY (continued)**

- 534 Sports (color)
- 535 Sports (black & white)
- 536 Train (color)
- 537 Train (black & white)
- 538 Humor (color)
- 539 Gotcha! - Candid Shot
- 540 Farm Scene (color)
- 541 Vintage (Reprint of Negative pre 1950s)
- 542 Selfie

## ANTIQUES SECTION 600

**ENTRY RULES**

1. Dealers are not permitted to exhibit.
2. Articles over 50 years old will be given preference. Articles should be in a good state of preservation.
3. Exhibits are limited to a single item per entry ticket unless otherwise specified, but you are permitted to have 3 entries per class.
4. In this section exhibitors may have a maximum of 90 entries in Classes 600 through 899.
5. Criteria for judging antique exhibits: Beauty, Rarity, Relative Age, Condition and Quality.
6. In Class 849, ten Honorable Mentions at \$2.00 each, will be awarded if deemed worthy. 1st, 2nd or 3rd place will **NOT** be awarded because of complexity of class.
7. See **General Entry Rules**.

**GLASSWARE**

**Premiums: 1st - \$3.00; 2nd - \$2.00; 3rd - \$1.00**

Best of Class - \$50 & Rosette

**Class**

- 600 Bottle, free blown
- 601 Paper weight
- 602 Cruet, clear
- 603 Cruet, colored
- 604 Lamp, miniature
- 605 Oil Lamp
- 606 Tumbler, clear, 1 specimen
- 607 Tumbler, colored, 1 specimen
- 608 Goblet, clear, 1 specimen
- 609 Goblet, colored, 1 specimen
- 610 Syrup pitcher
- 611 Console set, 3 pieces
- 612 Water pitcher, clear
- 613 Water pitcher, colored
- 614 Bread plate, clear or colored
- 615 Cake stand, clear or colored
- 616 Castor set, clear or colored
- 617 Sugar shaker, clear or colored
- 618 Reamer (juicer) clear or colored
- 619 Glass compote, open
- 620 Glass compote, covered
- 621 Specimen, pressed glass, clear
- 622 Specimen, pressed glass, colored
- 623 Specimen, milk glass
- 624 Master salts, (3 different pieces)
- 625 Salt dips, (3 different pieces)

**ANTIQUES Glassware (continued)**

- 626 Salt & pepper shaker, clear (one pair)
- 627 Salt & pepper shaker, colored (one pair)
- 628 Sugar & creamer
- 629 Toothpick holder
- 630 Glass perfume bottle, clear or colored
- 631 Glass bottles, other (3 different pieces)
- 632 Glass jars (3 different pieces)
- 633 Glass candlesticks (one pair)
- 634 Glass basket
- 635 Carnival glass
- 636 Ruby, specimen
- 637 Flash or souvenir glass
- 638 Slag Glass (e.g., Akro Agate)
- 639 Cambridge, specimen
- 640 Fenton, specimen
- 641 Fostoria, specimen
- 642 Heisey, specimen
- 643 Imperial, specimen
- 644 Tiffin, specimen
- 645 Westmoreland, specimen
- 646 Jadeite, specimen
- 647 Pyrex or Fire King, up to 6 piece set
- 648 Glass Kitchen specimen, other than above
- 663 Opaque
- 664 Bohemian, engraved
- 665 Clear, engraved
- 666 Satin glass
- 667 Mary Gregory
- 668 Crackle
- 669 Cranberry
- 670 Black Amethyst (black but purple when held up to light)
- 671 Amethyst (purple)
- 672 Black (Black)
- 673 Cobalt
- 674 Opalescent
- 675 Vaseline Glass
- 676 Stretch Glass
- 677 Depression glass, green
- 678 Depression glass, blue
- 679 Depression glass, pink
- 680 Depression glass, yellow
- 681 Depression glass, clear
- 682 Depression glass, red
- 683 Glass vase other than listed, under 8"
- 684 Glass vase other than listed, 8" and over
- 685 Glass bell
- 686 Glass specimen other than listed
- 687 Glass specimen with advertising

**CUT GLASS, American Specimen**

**Premiums: 1st - \$3.00; 2nd - \$2.00; 3rd - \$1.00**

Best of Class - \$25 & Rosette

**Class**

- 690 Bowl
- 691 Vase
- 692 Compote, stemmed
- 693 Pitcher, large
- 694 Cream and sugar
- 695 Specimen cut glass
- 696 Cruet or decanter

**ANTIQUES (continued)**

## CHINA SECTION 700

**CHINA****Premiums: 1st - \$3.00; 2nd - \$2.00; 3rd - \$1.00**Best of Class - \$25 & Rosette**Class**

- 700 Egg Cup (not coddler)
- 701 Bisque or Parian
- 702 Flow Blue
- 703 Ironstone
- 704 Lustre Ware
- 705 Fiestaware, specimen
- 706 Czechoslovakian
- 707 Dutch (e.g., Delft)
- 708 English - Wedgewood
- 709 English - Other (e.g., Staffordshire)
- 710 French (e.g., Limoges)
- 711 German (e.g., Bavarian, Prussian)
- 712 Irish (e.g., Beleck)
- 713 Italian (e.g., Capodimonte)
- 714 Japanese - Lefton
- 715 Japanese - Other (e.g., Noritake)
- 716 Occupied Japan, single figurine
- 717 Occupied Japan, single specimen, tableware
- 718 Occupied Japan, single specimen, other
- 719 Tea Set
- 720 Children's Tea Set
- 721 Vase, under 8"
- 722 Vase, 8" or over
- 723 Platter, large
- 724 Vegetable dish, covered
- 725 Vegetable dish, no cover
- 726 Restaurant china, specimen
- 727 Compote
- 728 Pitcher, over 12"
- 729 Pitcher, 8" to 12"
- 730 Pitcher or creamer, under 8"
- 731 Tureen
- 732 Sugar and creamer
- 733 Salt & pepper shaker
- 734 China candlesticks, one pair
- 735 China bell
- 736 Tea pot
- 737 Chocolate pot
- 738 Cup and saucer
- 739 Cup and saucer, demi-tasse
- 740 Figurine, animal
- 741 Figurine, other, under 6"
- 742 Figurine, other, 6" or over
- 743 Plate, historical American or local view or event
- 744 Plate, calendar
- 745 Plate, ABC or nursery rhyme
- 746 Plate, souvenir, under 8"
- 747 Plate, decorated, 8" or over
- 748 Plate, decorated, under 8"
- 749 Plate, souvenir, 8" or over
- 750 Plate, decal design, under 8"
- 751 Plate, decal design, 8" or over
- 752 Nippon single specimen
- 753 Head Vase
- 754 Place Setting (Max 7 pieces)
- 755 Miscellaneous China

**ANTIQUES (continued)****POTTERY****Premiums: 1st - \$3.00; 2nd - \$2.00; 3rd - \$1.00**Best of Class - \$25 & Rosette**Class**

- 760 Cowan
- 761 Frankoma
- 762 Hall
- 763 Hull
- 764 Haeger
- 765 McCoy
- 766 Rookwood
- 767 Roseville
- 768 Shawnee
- 769 Weller
- 770 Brownware
- 771 Majolica
- 772 Spongeware
- 773 Specimen, other than above, 10" or over (height)
- 774 Specimen, other than listed, under 10" (height)
- 775 Cookie Jar

## SINGLE SPECIMEN ANTIQUES SECTION 800

**Premiums: 1st - \$3.00; 2nd - \$2.00; 3rd - \$1.00**Best of Class - \$50 & Rosette**Class**

- 800 Jewelry
- 801 Watch
- 802 Parasol
- 803 Hat, women's
- 804 Hat, men's
- 805 Hat, child's
- 806 Clothing, women's (up to 3 pc. set)
- 807 Clothing, men's (up to 3 pc. set)
- 808 Clothing, children's (up to 3 pc. set)
- 809 Purse
- 810 Mens and ladies accessories, single item
- 811 Toiletry Items (up to 6 pcs.)
- 812 Christening gown (up to 3 pc. set)
- 813 Coverlet
- 814 Quilt
- 815 Household linen, one piece
- 816 Decorative needlework
- 817 Sterling or silverplate holloware
- 818 Sterling or silverplate flatware
- 819 Pewter - single item
- 820 Brass - single item
- 821 Toy, cast iron
- 822 Doll furniture
- 823 Teddy bear
- 824 Doll, bisque
- 825 Doll, composition
- 826 Doll, other than above
- 827 Toy, other than listed above
- 828 Soapstone
- 829 Cloisonné specimen
- 830 Framed print
- 831 Framed photograph
- 832 Framed painting
- 833 Papier-mâché article
- 834 Lunch Box/Bucket

**ANTIQUES (continued)****Class**

- 835 Kitchen collectible, single specimen
- 836 Sewing collectible, single specimen
- 837 Advertising Memorabilia (not paper)
- 838 Fountain Pen
- 839 Metal bell
- 840 Bells, string
- 841 Music box
- 842 Basket, woven wood or cane (no glass)
- 843 Book Ends (1 set)
- 845 Table lamp
- 846 Camera
- 847 Clock
- 848 Radio
- 849 Specimen, single article, other than listed
- 850 Musical instrument, in working order
- 851 Hammered aluminum
- 852 Christmas collectible, single specimen
- 853 Enamelware
- 854 Lantern
- 855 Wooden household article
- 856 Cast iron household article
- 857 Tin or tole household article
- 858 Kettle, brass or copper (large size)
- 859 Chair
- 860 Furniture, wooden, other than chair
- 861 Rocking chair, adult or child's
- 862 Farm tools
- 863 Hand tools
- 864 Cradle, infants
- 865 Baby buggy
- 866 Doll buggy
- 867 Small electric household item
- 868 Ugly tie
- 869 Stump the Judge
- 870 Television Memorabilia

**ANTIQUE COLLECTIONS**

*Collections MUST have 6 pieces to qualify for judging.*

**Premiums: 1st - \$3.00; 2nd - \$2.00; 3rd - \$1.00**

Best of Class - \$25 & Rosette

**Class**

- 871 Brass (6 pieces)
- 872 Copper (6 pieces)
- 873 Pewter (6 pieces)
- 874 Tin (6 pieces)
- 875 Banks (6 pieces)
- 876 Trivets (6 pieces)
- 877 Mustache cups or shaving mugs (6 pieces)
- 878 Beer steins/Mugs (6 pieces)
- 879 Toothpick holders (6 pieces)
- 880 Insulators (6 pieces)
- 881 Spoons, max. exhibit size 24" x 24"
- 882 Buttons/Pins, max. exhibit size 18" x 18"
- 883 Hat pins, max. exhibit size 18" x 18", minimum of 6 pins
- 884 Fans, max. exhibit size 24" x 24" (6 pieces)
- 885 Coins, max. exhibit size 18" x 18"
- 886 Marbles, max. exhibit size 18" x 18"
- 887 Glass (6 pieces) max exhibit size 18" x 24"
- 888 Collection other than above, maximum size 18" x 18"

**ANTIQUES (continued)****ANTIQUE PAPER ITEMS**

*Class 889-892 MUST be mounted for display on table - maximum size 18" x 18"*

**Premiums: 1st - \$3.00; 2nd - \$2.00; 3rd - \$1.00;**

Best of Class - \$10 & Rosette

**Class**

- 889 Birthday cards (6)
- 890 Valentines (6)
- 891 Christmas cards (6)
- 892 Picture post cards (6)
- 893 Cookbook
- 894 Newspaper article
- 895 Advertising Memorabilia
- 896 Children's Book
- 897 Sheet Music
- 898 Non-Fiction Book
- 899 Specimen other than listed

## ANTIQUE WEAPONS and ACCOUTREMENTS SECTION 900

*Articles judged on Condition, Age, and Rarity.*

**Premiums: 1st - \$10.00; 2nd - \$5.00; 3rd - \$3.00**

Best of Show Weapons - \$20.00 & Rosette

**Class**

- 900 Flintlock pistol
- 901 Percussion single shot pistol
- 902 Single action revolver
- 903 Double action revolver
- 904 Derringer
- 905 Firearms curios, combination unusual and rare weapons
- 906 Automatic pistol
- 907 Flintlock rifle
- 908 Percussion rifle
- 909 Lever action repeating rifle
- 910 Cartridge rifle
- 911 Shotguns
- 912 Sabre or sword
- 913 Military bayonet
- 914 Shot flasks or Powder flasks
- 915 Pistol & sword belts with buckles
- 916 Weapon accoutrements
- 917 Pocket knife
- 918 Specimen other than above

**MILITARY MEMORABILIA****Class**

- 919 Civil War, single specimen
- 920 WWI, single specimen
- 921 WWII, single specimen
- 922 Korean War, single specimen
- 923 Other war, single item



# DOMESTIC ARTS AND HOBBIES DEPARTMENT 4-B

## BUILDING 29

JAMES LEWANDOWSKI  
Director-At-Large  
*FairGuy01@yahoo.com*

## SECTIONS

Culinary • Wine • Beer •  
Hobby Show • Table Setting • Ironing Contest

## IMPORTANT ARTS & CRAFTS DATES - DEPT 4-B ONLY

- Fri., July 29 - Entry Forms Due
- Thur., Aug. 4 - Wine & Beer Accepted,  
classes 200-299 (In Arts & Crafts  
Building) 6:00 P.M. - 8:00 P.M.
- Fri., Aug. 5 - All Entries accepted except culinary  
9:00 A.M. - 8:00 P.M.
- Sat., Aug. 6 - All Entries accepted (except classes  
165-192) 9:00 A.M. - 4:00 P.M.
- Sun., Aug. 7 - Only culinary entries accepted  
classes 195-199, 9:00 A.M. - 11:30 A.M.
- Thur., Aug. 11 - Culinary (classes 165-179)  
9:00 A.M. - 10:00 A.M.  
Pies (classes 180-192)  
9:00 A.M. - 12:30 P.M.
- Mon., Aug. 15 - Entry Pick Up - 9:00 A.M. - 7:00 P.M.

## CULINARY SECTION 100

### ENTRY RULES

1. Limit of two (2) entries per class.
2. Rolls and Muffins are to be exhibited 6 on a plate.
3. Cookies are to be exhibited 6 on a plate.
4. Candies are to be exhibited 8 pieces on a plate.
5. Bring entry covered with plastic wrap or zip-lock bag.
6. Paper plates only please.
7. Any type pie pan may be used, but Fair Management will **NOT** be responsible for pan. Mark pan with an address label.
8. Yeast (classes 130-146) can be picked up Sunday at 5P.M. after judging. Cakes and pies (classes 165-192) can be picked up Thursday after the live judging of pies.
9. Items that can withstand summer weather - Cookies, Candies - can be dropped off Sat. 9am-4P.M. before fair week.
10. Recipes are not required but are encouraged.
11. See **General Entry Rules**.

## CULINARY (continued)

Note: Gluten free bakery can be entered into classes other than classes 111, 122, 135, 139, 146.

## SUNDAY SHOW

### COOKIES

Premiums: 1st - \$3.00; 2nd - \$2.00; 3rd - \$1.00

Best of Cakes: \$15.00 & Rosette

#### Class

- 100 Rolled cookie
- 101 Drop cookie
- 102 Bar cookie
- 103 Pressed cookie
- 104 Refrigerator cookie
- 105 Filled cookie
- 106 Chocolate chip cookie
- 107 Oatmeal cookie
- 108 Peanut butter cookie
- 109 Brownie
- 110 Shaped/Formed cookie
- 111 Gluten Free cookie
- 112 No-bake cookie
- 113 Macaroon
- 114 Cookie, any type, by a junior under 18 yrs.
- 115 Cookie, any type, by a man
- 116 Cookie, any type, by a senior citizen
- 117 Cookie other than above

### PASTRY (Whole Pastry or 8 Pieces)

Premiums: 1st - \$4.00; 2nd - \$3.00; 3rd - \$2.00

#### Class

- 120 Pastry
- 121 Roll (i.e. nut, poppyseed, etc.)
- 122 Gluten Free pastry

### DECORATED CAKES AND NOVELTIES

(May Use Cake Form)

Premiums: 1st - \$10.00; 2nd - \$6.00; 3rd - \$4.00

#### Class

- 123 Cupcake cake
- 124 Iced cookies (min 6)
- 125 Special Occasion
- 126 Wedding
- 127 Novelty
- 128 Gingerbread House
- 129 Birthday

## ★ Featured Category in 2022 ★ Best of Yeast Goods \$50 & Rosette

### YEAST GOODS

Premiums: 1st - \$3.00; 2nd - \$2.00; 3rd - \$1.00

Best of Bread: \$10.00 & Rosette

Best of Rolls: \$10.00 & Rosette

#### Class

- 130 White bread, one loaf
- 131 Whole wheat bread, one loaf
- 132 Rye bread, one loaf
- 133 Foreign or nationality bread, one loaf
- 134 Savory (onion, tomato, etc.) one loaf
- 135 Gluten Free, one loaf
- 136 Dinner rolls - parker house, clover leaf, etc.
- 137 Sweet rolls - cinnamon, pecan, etc.

**CULINARY (continued)**

- 138 Rolls – savory (onion, garlic knots, etc.)
- 139 Rolls – gluten free
- 140 Holiday or special occasion sweet rolls, tea rings, etc.
- 141 Kuchen or coffee cake with or without yeast
- 142 Bread – no yeast (quick bread) one loaf
- 143 Zucchini bread
- 144 Banana bread
- 145 Quick bread – savory, one loaf
- 146 Quick bread – gluten free, one loaf
- 147 Cornbread, 6 pieces or one loaf
- 148 Specimen made by a senior citizen with or without yeast
- 149 Specimen other than above

**CANDY**

**Premiums: 1st - \$3.00; 2nd - \$2.00; 3rd - \$1.00;**  
**Best of Candy: \$15.00 & Rosette**

**Class**

- 150 Caramel
- 151 Chocolate fudge
- 152 White fudge
- 153 Fudge, other
- 154 Peanut brittle (or other nut)
- 155 Toffee
- 156 Sea foam/honeycomb candy
- 157 Chocolate creams/Truffles
- 158 Chocolate bonbons
- 159 Chocolate nut clusters
- 160 Fruit cluster, with or without nuts
- 161 Hard candy
- 162 Candy, any type, by a senior citizen
- 163 Specimen candy other than above

**THURSDAY SHOW**

**Drop off 9 A.M. - 10 A.M. Thursday of Fair Week**

**CAKES (Bring Whole Cake)**

**Premiums: 1st - \$6.00; 2nd - \$4.00; 3rd - \$3.00**  
**Best of Cakes: \$10.00 & Rosette**

**Class**

- 165 Chiffon cake (not iced)
- 166 Angel food cake (not iced)
- 167 Sponge cake (not iced)
- 168 White layer cake
- 169 Yellow layer cake
- 170 Spice layer cake
- 171 Chocolate layer cake
- 172 Pound cake
- 173 Cake, by junior (under 18) not coffee cake
- 174 Cake by a man, not coffee cake
- 175 Cake by a woman, not coffee cake
- 176 Muffins
- 177 Cupcakes, Cake balls/pops
- 178 Specimen other than above
- 179 Specimen made by a senior citizen

**Thursday, August 11<sup>th</sup> at 1:00 P.M. in the Home & Hobby Building. Please come watch as our judges taste each pie and choose the best in each category!**

**PIES (In 8" or 9" pie pan)**

**Live judging 1:00 P.M. in the Home & Hobby Building.**

**Pies can be dropped off 9:00 A.M. - 12:30 P.M.**

**Premiums: 1st - \$5.00; 2nd - \$4.00; 3rd - \$2.00;**  
**Best of Pies: \$25.00 & Rosette**

**CULINARY (continued)****Class**

- 180 Apple
- 181 Berry
- 182 Cherry
- 183 Peach
- 184 Rhubarb
- 185 Other than above (not refrigerator type)
- 186 Chocolate
- 187 Lemon
- 188 Cheesecake
- 189 Coconut Cream
- 190 Banana Cream
- 191 Savory
- 192 Other – refrigerator type

**PIEROGI (Exhibit 4 on a plate)**

**Featured 2022 \$25 and Rosette**

**Premiums: 1st - \$4.00; 2nd - \$3.00; 3rd - \$2.00;**

**Class**

- 195 Pierogi – Potato/cheese
- 196 Pierogi – Kraut
- 197 Pierogi – Fruit
- 198 Pierogi – Sweet
- 199 Pierogi – Other

## WINE & BEER SECTION 200

**HOMEMADE WINE ENTRY RULES**

1. Wines may be made from grapes, other fruit, berries, vegetables, grains, other suitable ingredients, or blends of these.
2. Ingredients may be fresh, canned, dried, concentrated, or otherwise preserved.
3. Wines should be amateur- homemade by the process of fermentation and must not be blended with commercial wines.
4. Wines appropriate for fortification may be fortified with suitable commercial spirits in dessert class only.
5. Exhibitors may enter only one bottle in each class. A single bottle may be entered in only one class.
6. Each wine entry must be identified as to major ingredient(s) - grape varietal, fruit, berry, etc. and percent of each. Fair personnel will write this information on the back of each bottle's ticket.
7. Any exhibitor who would like to pick up his/her wine after judging should bring a bottle of colored liquid (similar in color to the one entered) to the Arts & Crafts Building between 4:00 P.M. - 5:00 P.M. on Sunday preceding fair week. An exchange bottle must be presented for each bottle being taken. Please bring your claim checks to facilitate an easy exchange. Ribbons remain with bottle being exhibited during the Fair.
8. Wine entries will be accepted at the Home & Hobby Building, Thurs. 6:00 P.M. - 8:00 P.M.; Fri. 9:00 A.M. - 8:00 P.M.; and Sat. 9:00 A.M. - 4:00 P.M. (before Fair Week).
9. See **General Entry Rules**, Page 6.

**CULINARY (continued)****RULES FOR PRESENTATION**

1. Still wines must be submitted in clear, green or brown smooth glass bottles of approximately 26-ounce (4/5 quart) capacity or metric equivalent.
2. Bottles of the general shape called "Bordeaux", "Burgundy" or "Rhine" are acceptable.
3. Bottles must have nearly straight sides and may be closed with cork, screw top or plastic stopper.
4. Sparkling wines must be in standard (green or clear) champagne bottles with wired conventional champagne stoppers.
5. Capsules, foils, or other seals must not be used over the bottled closure.
6. Bottles must be filled so that one or two inches of air space remains under the fully installed top or cork.
7. **NO** labels. You may include a label to be displayed after judging.

**BEST OF SHOW: Dry - \$50 & Rosette / Sweet - \$50 & Rosette**

**HOMEMADE WINES**

**Premiums: 1st - \$4.00; 2nd - \$3.00; 3rd - \$2.00; 4th - \$1.00**

**Class**

- 200 Dry red table wine — fresh vinifera
- 201 Dry red table wine — French hybrid grape
- 202 Dry red table wine — fresh labrusca grape
- 203 Dry red table wine — grape concentrate
- 204 Dry red table wine — other than grape, fresh or concentrate
- 205 Dry white table wine — fresh vinifera
- 206 Dry white table wine — French hybrid grape
- 207 Dry white table wine — fresh labrusca grape
- 208 Dry white table wine — grape concentrate
- 209 Dry white table wine — other than grape, fresh or concentrate
- 210 Rose/Blush table wine
- 211 Sweet red wine — grape
- 212 Sweet red wine — other than grape - i.e., fruit, berry, flower or vegetable
- 213 Sweet red wine — from concentrate
- 214 Sweet white wine — grape
- 215 Sweet white wine — other than grape - i.e., fruit, berry, flower or vegetable
- 216 Sweet white wine — from concentrate
- 217 Red Dessert — grape, fruit, or berry
- 218 White Dessert — grape, fruit, or berry
- 219 Honey/Mead
- 220 Sparkling Wine

**HOMEMADE BEER ENTRY RULES**

1. Beer must be submitted in green or brown glass bottles that were made to hold beer, and are closed with crown style caps, rubber stoppers, or screw caps.
2. Do not label bottles — they should be free of markings and letterings.
3. Each entry is to consist of 2 bottles and must be labeled. A third bottle may be included with a label for display purposes only.
4. Styles are grouped for the purpose of listing them in this book only. Classes with sufficient entries will be subdivided.
5. Exhibitors may enter more than one beer per class provided they are of different types.
6. Beer entries will be accepted at the Home & Hobby Building, Fri. 9:00 A.M. - 8:00 P.M., Sat. 9:00 A.M. - 4:00 P.M. and Sun. 9:00 A.M. - 11:30 A.M. (Before Fair Week) Beer will be kept refrigerated until judging.
7. See **General Entry Rules**

**CULINARY (continued)****HOMEMADE BEER**

**Premiums: 1st - \$4.00; 2nd - \$3.00; 3rd - \$2.00; 4th - \$1.00**  
**BEST OF SHOW: \$10.00 & Rosette**

**Class**

- 289 Light Lager, Pilsner, European Amber Lager
- 290 Light Ale, Light Hybrid Beer, Amber Hybrid Beer, American Ale
- 291 English Pale Ale, Scottish & Irish Ale
- 292 English Brown Ale, Porter
- 293 Bock
- 294 Stout
- 295 India Pale Ale
- 296 German Wheat & Rye Beer, Belgian & French Ale, Specialty Beer
- 297 Belgian Strong Ale, Sour Ale
- 298 Fruit Beer, Spice/Herb/Vegetable Beer
- 299 Strong Ale, Smoke-Flavored & Wood-Aged Beer

## HOBBY SHOW SECTION 300

**ENTRY RULES**

**Limit of one entry per class and one item per entry unless otherwise specified, for Hobby Show.**

1. MAXIMUM size per exhibit - 24" x 24" in all classes except doll houses. Doll houses shall not exceed 24" x 43" at the base.
2. No limit on collection pieces unless specified. Rule #1 applies.
3. Due to limited space, exhibits will be placed on display on a first come basis; only those entering are allowed to set up exhibits. Exhibits may be moved after you place them by management to prevent overcrowding of exhibits.
4. Pre-mounting of the exhibits is STRONGLY recommended and a factor in judging. If display can be hung, please include hanging facilities.
5. Classes 300 through 310 are miscellaneous classes. A hobby must be entered in its specific class when such a class is listed, NOT UNDER "SPECIMEN OTHER THAN ABOVE." (For example, a collection of shells entered by a junior, must be entered in Class 331 not in Class 301 or 335).
6. All exhibits must have been made or collected by the exhibitor.
7. All entries assembled or made by the exhibitor are to have been completed **within the past year**. Entries recognized as having been entered before are not eligible for first place.
8. See **General Entry Rules**.

**DID YOU KNOW...?**

### The Cuyahoga County Fair Hosts an Indoor Flea Market?

November 5-6 / December 3-4

January 7-8 / February 4-5

March 4-5

## HOBBIES (continued)

### BEST OF SHOW IN HOBBIES

**Made Hobbies: Adult & Junior \$10 & Rosette**  
**Collection: Adult & Junior \$10 & Rosette**

## HOBBIES

**Premiums: 1st - \$5.00; 2nd - \$4.00; 3rd - \$3.00;**  
**4th - \$2.00; 5th - \$1.00**

### Class

- 300 Hobby MADE by youth, 12 years and under, limit 3 pieces
- 301 Hobby COLLECTED by youth, 12 years and under
- 302 Hobby MADE by junior, 13 to 18 years, limit 3 pieces
- 303 Hobby COLLECTED by junior, 13 to 18 years
- 304 Hobby MADE by woman, 18 years and over, limit 3 pieces
- 305 Hobby COLLECTED by woman, 18 years and over
- 306 Hobby MADE by man, 18 years and over, limit 3 pieces
- 307 Hobby COLLECTED by man, 18 years and over
- 308 Decoupage
- 309 Miniature hobby, made or collected, mounted, not to exceed 8" x 8" or 64 sq. in.
- 310 Hobby made by a senior citizen, limit 5 pieces
- 311 Ecology Specimen - Articles entered in this class MUST be made from recycled material.
- 312 Doll House, unfurnished
- 313 Doll House, furnished
- 314 Room Boxes
- 315 Origami (up to 3 pieces)
- 316 Paper model/folding
- 317 Paper mache, 1 item
- 318 Reclaimed/refurbished furniture - 1 piece
- 319 Lite-Brite, original pattern

### MODELS (Two Entries Per Class) — Not to exceed 3 feet

**Premiums: 1st - \$3.00; 2nd - \$2.00; 3rd - \$1.00**

### Class

- 320 Military vehicle, assembled from kit by adult
- 321 Military vehicle, assembled from kit by junior
- 322 Plane, rocket, boat, automobile, original (no kit parts) by adult
- 323 Plane/Rocket assembled from kit by adult
- 324 Plane/Rocket assembled from kit by junior
- 325 Boat, assembled from kit by adult
- 326 Boat, assembled from kit by junior
- 327 Car/Truck, assembled from kit by adult
- 328 Car/Truck assembled from kit by junior
- 329 Specimen, model other than above by adult
- 330 Specimen, model other than above by junior

### COLLECTIONS (Not Antique)

*You may have up to, but not over the number listed after each class. Do not exceed the number after each class.*

*Pre-mounting of exhibit is STRONGLY recommended.*

**Premiums: 1st - \$3.00; 2nd - \$2.00; 3rd - \$1.00**

### Class

- 331 Shells
- 332 Insects
- 333 Rocks and fossils
- 334 Gems
- 335 Nature specimen other than above
- 336 Pencils (no limit, note rule #1)
- 337 Shot Glasses (30 pieces)
- 338 Fishing lures or flies (15 pieces)
- 339 Brass (6 pieces)
- 340 Copper, not coins (6 pieces)
- 341 Banks (6 pieces)
- 342 Cell Phone Cases (6 pieces)
- 343 Beer steins or mugs (6 pieces)
- 344 Spoons (30 pieces)

## HOBBIES (continued)

- 345 Buttons (clothing, clip, pin-on) (15 pieces)
- 346 Comic Books (6 pieces)
- 347 Sports cards, 1 album
- 348 Sports card, 1 album by youth 12 years and under
- 349 Other trading cards, 1 album
- 350 Cloth patches/badges (15 pieces)
- 351 Stickers by youth, 12 years and under (1 album)
- 352 Match books (up to 25 pieces)
- 353 Baseball caps (8 pieces)
- 354 Key Chains (15 pieces)
- 355 Magnets (15 pieces)
- 356 Rubber Stamps (15 pieces)
- 357 Post Cards (15 pieces)
- 358 Beer or Soda pop cans (15 pieces)
- 359 Coffee Mugs (6 pieces)
- 360 Beanie-type Babies (15 pieces)
- 361 Teddy Bears (6 pieces)
- 362 Die-cast Toys (i.e. Hot Wheels, cars) (15 pieces)
- 363 Fast Food Collectibles (15 pieces)
- 364 Money (25 pieces)
- 365 Lunch Boxes (6 pieces)
- 366 License Plates (8 pieces)
- 367 Nutcrackers (8 pieces)
- 368 Pressed Pennies (no limit, note rule #1)

### DOLLS (Not Antique)

**Premiums: 1st - \$3.00; 2nd - \$2.00; 3rd - \$1.00**

### Class

- 380 Pair, set or couple (2 dolls)
- 381 Hand-made Doll
- 382 Doll with home-made clothes
- 383 Character doll
- 384 Religious doll/Figuerine
- 385 Troll doll (maximum 5)
- 386 Barbie Dolls (maximum 5)
- 387 Collection of nationality dolls (maximum of 5)
- 388 Collection of dolls, other than nationality (maximum of 5)
- 389 Specimen doll other than above (Single doll)

## DECORATED CHRISTMAS TREE SECTION 400

### ENTRY RULES

1. Exhibitor is responsible for supplying their own tree, no size restrictions.
2. Electricity is available.
3. Tree base should be secured to a 2'x2' board to prevent tipping.
4. Secure all items, building is breezy.
5. See **General Entry Rules**.

**Premiums: 1st - \$15.00; 2nd - \$10.00; 3rd - \$5.00 ; 4th - \$3.00**

### Class

- 401 Miniature Decorated Christmas Tree under 3'
- 402 Decorated Christmas Tree over 3'
- 403 Tree with Non-Christmas Theme under 3'
- 404 Tree with Non-Christmas Theme over 3'

## TABLE SETTING SECTION 500

### ENTRY RULES

1. Limit of one entry per class.
2. Exhibitor is responsible for furnishing their own table for two (2).
3. Exhibit should include tablecloth, napkin, etc. for two (2), centerpiece, and menu.
4. Signs and promotional materials are permitted.
5. Secure all items, building is breezy.
6. Table settings are judged on general appearance, completeness, decorating, originality, menu, correct plating, and adhering to the rules above.
5. See **General Entry Rules**.

### AMATEUR

**Premiums: 1st - \$15.00; 2nd - \$10.00; 3rd - \$5.00 ; 4th - \$3.00**

### Class

- 501 Formal
- 502 Holiday
- 503 Tea
- 504 Brunch
- 505 Picnic
- 506 Party
- 507 Table set up by Junior (under 18 yrs)

## IRONING CONTEST SECTION 600

### ENTRY RULES

1. Contest will take place at 6:00 P.M. Friday of Fair Week in the Olde Barn Pavilion.
2. Exhibitors will compete in groups of 5, judges will create groups based on age at time of contest.
3. Iron and board will be provided. Contestants are welcome to bring their own iron and/or starch.
4. Each exhibitor will have 7 minutes to iron a cotton button down men's dress shirt from a wrinkled state.
5. See **General Entry Rules**.

**Premiums: 1st - \$15.00; 2nd - \$10.00; 3rd - \$5.00**

### Class

- 601 Live Ironing Competition

## CANINE DISPLAY DEPARTMENT 12

### DISPLAYED IN JR. FAIR BUILDING

**HOLLY EVERHART**

Director-At-Large

[ccfjrfair@yahoo.com](mailto:ccfjrfair@yahoo.com)

**ALISON UNGAR**

Superintendent

### ENTRY RULES

1. Items previously exhibited in the Fair, or any other Fair, in this Department or others, are not eligible.
2. All exhibits must be solely the work of the exhibitor.
3. Exhibitors are limited to a single item per class unless otherwise specified under the class.
4. Minimum size per exhibit 24"x 24" unless otherwise stated.
5. All entries assembled by or made by the exhibitor are to have been completed in the past year unless otherwise noted.
6. All items must showcase a canine, or be used for a canine.
7. Photos are to be 5"x 7", securely mounted on 8"x 10" mat.
8. Drawing and painting must be matted and ready to hang. No glass on frames.
9. See **General Entry Rules**.

**Premiums: 1st - \$3.00; 2nd - \$2.00; 3rd - \$1.00**

**Best in Show - Trophy & \$10.00**

## SECTION 100

### Class

1. Canine Painting - any medium
2. Canine Drawing - any medium
3. Canine Handicraft small (needlework, cross stitch, crochet, quilt) Min Size 24" x 24" - not ribbons
4. Canine Handicraft large (needlework, cross stitch, crochet, quilt) Min Size 25" x 25" - Max Size 60" x 60" - not ribbons
5. Canine Felted object
6. Canine Ceramic
7. Canine Collection (6-10 pieces)
8. Embroidered design on article of clothing
9. Decorated garment - not embroidered
10. Canine Toy
11. Canine Leash
12. Decorated Treat Jar
13. Canine Action Photo - Color (must be your photo, not one from a professional that you bought from) - no humans
14. Canine Still Photo - Color (must be your photo, not one from a professional that you bought from) - no humans
15. Canine Action Photo - Black & White (must be your photo, not one from a professional that you bought from) - no humans
16. Canine Still Photo - Black & White (must be your photo, not one from a professional that you bought from) - no humans
17. Ribbon Display - Sewn (wall hanging, crate cover, etc) - no size limitation
18. Ribbon Display - Container (glass blocks, lanterns, etc)
19. Ribbon Display - Shadowbox



## CANINE (continued)

20. Ribbon Display - any other style
21. Machine or Hand Sewn Canine Clothing (for the Canine to wear)
22. Antique advertisement depicting canines
23. Antique Canines of War memorabilia (up to 6 pieces)
24. Decorated Chair - Max Size (34.25 x 24.75 x 24.5 (HxWxD) inches)

# GARDEN AND PRODUCE DEPARTMENT 25

## BUILDING 33

Home Canning • Fruits

Nuts • Vegetables

Senior Citizen Gardeners

Community Garden Displays

Herb Garden Displays • Home Garden Displays

**TOM SABREY**

Director-At-Large

**GAIL HOLZMAN / AMANDA HOLZMAN**  
**THEME: FIELD OF DREAMS**

### 1st SHOW ENTRY TIME

Accepted on Saturday, preceding the Fair  
from **9:00 a.m. - 4:00 p.m.**  
and on Sunday from **9:00 a.m. - Noon**

### 2nd SHOW ENTRY TIME

Accepted on Wednesday of Fair Week  
\*From **6:00 p.m.- 9:30 p.m.**  
and on Thursday of Fair Week from **8:00 a.m. - 9:30 a.m.**

## JUDGING

**1st SHOW, 1:00 p.m.**

Sunday Before Opening Day

**2ND SHOW, 10:00 a.m.**

Thursday of Fair Week

**ALL JUDGING IS CLOSED**

## GARDEN AND PRODUCE ENTRY RULES

1. The Entry Requirements of the Cuyahoga County Fair apply to this department in addition to the following.
2. All products exhibited **MUST BE GROWN BY THE EXHIBITOR** except entries in Section 100, Class 1 and Section 500, Classes 21-22, Section 600 Class 1.
3. Except in the case of displays, fruits or vegetables

## GARDEN & PRODUCE (continued)

incorrectly labeled will not be eligible for premiums. Mistakes in names will be corrected by the judge(s) whenever possible.

4. Only one plate of each variety or one collection or display may be entered in competition for the same premium by an individual grower or firm.
5. There will be two (2) shows in all Divisions, Sections or Classes marked with an asterisk (\*).
6. To be eligible to compete in the second show there must be a rearrangement or replacement of exhibit, plus a new tag displayed on each entry.
7. **Be sure to specify on your entry form if you are entering the first, second or both shows. If there is only one show, check first show box on entry form. If no show is checked, then the entries will only be entered in the first show.**
8. All exhibits/entries can be picked up on Sunday, the last day of the Fair, from 8:30 p.m. - 10:00 p.m. or Monday 2:00 p.m. - 7:00 p.m. Exhibitor Tag required for pickup. Any exhibits not claimed will be disposed of at the discretion of the Director or the Superintendent. Award ribbons not claimed will be available at the Fair Office the week following the Fair.
9. Any exhibits showing undue spoilage during the Fair will be disposed of at the discretion of the Director or Superintendent.
10. Plates are available for display of all Fruits and Vegetables.
11. The Garden Produce Section is open to all ages with the exception of the Senior Citizen Gardeners. Senior Citizen Gardeners are 60 years and older at the time of entry.
12. Size of display areas and number of exhibits will be determined solely by the Director or Superintendent of the Department.
13. All materials in displays must meet local fire department regulations.
14. The Director or Superintendent of the Department has the final decision on the suitability of any entry or display.
15. An honorable mention ribbon may be awarded at the discretion of the judges. No prize money.
16. No Blue Ribbon, Rosette, or Trophy winning entries are eligible for entry in second show.
17. First, second, third and fourth place will receive a ribbon at the discretion of the judges.
18. ALL judging is closed to the public.
19. Judges have the right to cut open any fruit or vegetable.
20. See **General Entry Rules**

## EDUCATIONAL GARDEN DISPLAYS SECTION 100

## COMMUNITY GARDEN COMPETITION Class

1. Community Garden Display

1st	2nd	3rd	4th	5th
\$100.00	75.00	Rosette	Rosette	Rosette
Rosette	Rosette			

DEPT 12

DEPT 25

**GARDEN & PRODUCE (continued)****ENTRY RULES**

- Note Garden Produce Entry Rules 2, 13 & 14.
- One representative from each community garden shall be responsible for the entry fee and forms. To qualify a minimum of 5 individuals must participate from each garden. A 5" x 7" card must be displayed with the names and addresses of all participants. Additional set up help is permitted.
- Vegetables and/or fruit used in the display must be grown by the participants at the community garden site.
- The display must consist of a minimum of 60% produce. Accessories and decorations can be used to carry out the theme.
- All produce must be correctly labeled for educational purposes.
- The display must fill the assigned space in the Building. A sign, must be placed in the display with the name and address of the community garden. No other advertising signs or materials are permitted.
- The following scale of points will serve as a guide for the judge(s) of the Department.

• General Appearance	15 points
• Arrangement of Materials	15
• Accessories/Decorations	10
• Labeling	10
• General Conditions and Appearance of Produce	40
• Completeness of Exhibit	10

**TOTAL** **100 points**

*Note: Any entry rule above broken could lead to deduction of points at the judges discretion.*

**HOME GARDEN VEGETABLE AND/OR FRUIT DISPLAY\*****Class**

- One Educational Display of Fruits and/or Vegetables by a Non-Commercial Grower

1st	2nd	3rd	4th
\$150.00	100.00	75.00	50.00
Rosette	Rosette	Rosette	Rosette

**ENTRY RULES**

- Produce to be grown and arranged by the person whose name appears on the entry form. Additional set-up help is permitted.
  - Display designed to accommodate the risers and background area in the Building.
  - Fruits and/or vegetables correctly labeled as to variety.
  - No advertising signs are permitted in the display.
  - Note Entry Rules 2, 8, 12 and 13.
  - Fruits and/or vegetables must make up a minimum of 50% of the display. Accessories and decorations to carry out the theme are permitted.
  - The judge(s) will be guided by the following scale.
- |                           |           |
|---------------------------|-----------|
| • General Appearance      | 20 points |
| • Arrangement             | 20        |
| • Accessory Decoration    | 10        |
| • Labeling                | 10        |
| • Nomenclature            | 5         |
| • Quality of Produce      | 20        |
| • Completeness of Exhibit | 10        |
| • Education               | 5         |

**TOTAL** **100 points**

**GARDEN & PRODUCE (continued)****HERB GARDEN DISPLAY\*****Class**

- One Educational Display of FRESH and DRIED HERBS and HERBAL PRODUCTS

1st	2nd	3rd	4th
\$150.00	100.00	75.00	50.00
Rosette	Rosette	Rosette	Rosette

**ENTRY RULES**

- All plant materials to be grown, made and arranged by the person whose name appears on the entry form.
- Display designed to accommodate the risers and background area in the Building.
- Display requires a minimum of 50% culinary herbs and culinary herbal products.
- All items must be correctly labeled.
- No advertising signs permitted in the display.
- Note Garden Produce Entry Rules 2, 8, 12, 13 & 14.
- The judge(s) will be guided by the following scale.

• General Appearance	20 points
• Arrangement	20
• Accessory Decoration	10
• Labeling	10
• Nomenclature	5
• Quality of Materials	15
• Completeness of Exhibit	10
• Education	5
• Herb Products	5

**TOTAL** **100 points**

**HOME CANNING SECTION 200****ENTRY RULES**

*All canned products including jams, jellies, conserves, preserves, fruits, syrups, pickles, relishes, meats, and sauces must be accompanied with a statement specifying the method and processing time. Examples: "20 minutes in boiling water bath," "30 minutes in pressure canner at 10 pounds pressure."*

- Clear, standard size, approved jars must be used.
- Add correct head space.
- Canning must be done within 12 months of the Fair.
- Multiple entries permitted in each class - Limit of one variety per class.
- Exhibit must be labeled with contents in recipe.
- Judge(s) reserve the right to open any and all entries.
- For pick up times see Entry Rule #8.
- See Entry Rule #9.**

**JUDGES SCALE PRESERVED FOODS****Jellies, Jams, Preserves, Conserves and Marmalades**

• Pack/Container	20 points
• Color	25
• Clarity/Clearness	20
• Consistency/Texture	25
• Flavor/Aroma	10

**TOTAL** **100 points**

## HOME CANNING (continued)

### Canned Fruits, Vegetables and Meats

• Pack/Container	20 points
• Color	20
• Uniform Size, Shape	20
• Clear, Bright Liquid	20
• Consistency/Texture	10
• Flavor/Aroma	10

**TOTAL** **100 points**

### Flavored Syrups, Juices

• Pack/Container	20 points
• Color	15
• Clarity	20
• Viscosity/Consistency	25
• Flavor/Aroma	20

**TOTAL** **100 points**

### Pickles, Relish, Sauerkraut, Chutney, ChowChow

• Pack/Container	20 points
• Color	10
• Texture	20
• Liquid	20
• Size/Shape	20
• Flavor/Aroma	10

**TOTAL** **100 points**

### Sauces/Salsa, Fruit or Vegetable

• Pack/Container	20 points
• Color	25
• Consistency/Texture	40
• Flavor/Aroma	15

**TOTAL** **100 points**

### Vinegars

• Pack/Container	20 points
• Color	25
• Quality of Added Items	15
• Liquid Clear & Bright	30
• Flavor/Aroma	10

**TOTAL** **100 points**

### Butters

• Pack/Container	20 points
• Color	30
• Consistency/Texture	35
• Flavor/Aroma	15

**TOTAL** **100 points**

Best of Show Trophy and Rosette awarded to a single entry selected by the Judge(s). 2nd and 3rd place Best of Show receives Rosettes.

**Premiums: 1st - \$3.00; 2nd - \$2.00; 3rd - \$1.00**

#### Class

1. Jams
2. Jellies
3. Preserves, Conserves, Marmalades, Juices
4. Fruits
5. Syrups
6. Vegetables

## HOME CANNING (continued)

7. Pickles, dill
8. Pickles, sweet
9. Pickles, vegetable
10. Pickles, fruit
11. Relish
12. Meats
13. Vinegar, homemade or flavored - clear bottle
14. Sauces, Fruit (ex. apple)
15. Sauces, Vegetable (ex. barbecue)
16. Salsa
17. Butter (ex. apple, peach)
18. Mustards
19. Juices
20. Any other

## OPEN CLASS - ALL AGES

### FRUIT SECTION 300

First and second show trophies will be awarded to the BEST OF SHOW for a single specimen of fruit selected from all entries. The winner will be selected by the judge(s) of the Department.

*\*\*\*Please note Entry Rules 2, 8 & 16.*

### APPLES\*

Single Plate with 5 specimens

**Premiums: 1st - \$4.00; 2nd - \$3.00; 3rd - \$2.00; 4th - \$1.00**

#### Class

- |                      |                             |
|----------------------|-----------------------------|
| 1. Cortland          | 9. McIntosh                 |
| 2. Delicious, Golden | 10. Mutsu                   |
| 3. Delicious, Red    | 11. Northern Spy            |
| 4. Granny Smith      | 12. Rome Beauty             |
| 5. Jonagold          | 13. Ruby                    |
| 6. Jonathon          | 14. Stayman Winesap         |
| 7. Lodi              | 15. Any other named variety |
| 8. McIntosh, Early   |                             |

### CRAB APPLES\*

Single Plate with 10 specimens

**Premiums: 1st - \$3.00; 2nd - \$1.50; 3rd - \$1.00**

#### Class

16. Any named variety

### PEARS\*

Single Plate with 5 specimens

**Premiums: 1st - \$4.00; 2nd - \$2.50; 3rd - \$2.00; 4th - \$1.00**

#### Class

17. Bartlett
18. Bosc
19. Any other named variety

### NUTS

#### ENTRY RULES

- A. Please note Entry Rules 2 & 8.
- B. Nuts must be harvested within 12 months of the fair.
- C. One show only.

Single Plate with 10 specimens with one cut in half to expose the meat of the nut

**Premiums: 1st - \$4.00; 2nd - \$3.00; 3rd - \$2.00**

## HOME CANNING (continued)

### Class

20. Black Walnuts
21. Carpathian Walnuts (English)
22. Chestnuts
23. Filberts (Hazelnuts)
24. Butternuts
25. Any other named variety

## PEACHES\*

Single Plate with 5 specimens

**Premiums: 1st - \$4.00; 2nd - \$3.00; 3rd - \$2.00**

### Class

26. Red-Haven
27. Any other named variety

## GRAPES\*

Single Plate with 3 bunches

**Premiums: 1st - \$3.00; 2nd - \$2.00; 3rd - \$1.00**

### Class

- |             |                             |
|-------------|-----------------------------|
| 28. Catawba | 31. Seedless varieties      |
| 29. Concord | 32. Any other named variety |
| 30. Niagara |                             |

## PLUMS\*

Single Plate with 5 specimens

**Premiums: 1st - \$3.00; 2nd - \$2.00; 3rd - \$1.00**

### Class

- |                   |                             |
|-------------------|-----------------------------|
| 33. Green Gage    | 35. Stanley                 |
| 34. Italian Prune | 36. Any other named variety |

## BERRIES\*

**Premiums: 1st - \$4.00; 2nd - \$3.00; 3rd - \$2.00**

### Class

37. Blueberries, pint box
38. Raspberries, Red or Black, pint box
39. Blackberries, pint box
40. Strawberries, pint box
41. Any other variety of berry, pint box

## APRICOTS & NECTARINES\*

**Premiums: 1st - \$4.00; 2nd - \$2.50; 3rd - \$2.00**

### Class

42. Any variety apricot, 5 specimens
43. Any variety nectarine, 5 specimens

## MELONS\*

**Premiums: 1st - \$4.00; 2nd - \$2.50; 3rd - \$2.00**

### Class

44. Melon, Water - 1 specimen, refrigerator type.
45. Melon, Musk - 1 specimen - netted
46. Melon, Musk - 1 specimen - semi-netted
47. Melon, Musk - 1 specimen - smooth

## MIXED FRUIT BASKET\*

**Premiums: 1st - \$8.00; 2nd - \$5.00; 3rd - \$3.00; 4th - \$2.00**

### Class

48. Mixed Fruit Basket
  - A. Please note Entry Rules 2 and 16
  - B. 5 or more different varieties of local grown FRESH fruit
  - C. First, second, third and fourth will receive a Rosette.  
Basket size not to exceed 2 ft. in length, width or height.

## OPEN CLASS - ALL AGES

### VEGETABLES\* SECTION 400

A trophy will be awarded to the BEST OF SHOW for a single entry in the FIRST and SECOND SHOW. The winner will be selected by the judge(s) of the Department.

Note Garden Produce Entry Rules 2, 8 & 16.

**Premiums: 1st - \$3.00; 2nd - \$2.00; 3rd - \$1.00**

### Class

1. Beans, Pole - 10 pods: all stems trimmed evenly
2. Beans, Green Snap - 10 pods: all stems trimmed evenly
3. Beans, Yellow Snap - 10 pods: all stems trimmed evenly
4. Beans, Lima - 10 pods: all stems trimmed evenly
5. Beets - 3 specimens, leaves removed to 2"
6. Broccoli - 1 specimen
7. Cabbage, Early - 1 head, only 1 row of open leaves left on
8. Cabbage, Late - 1 head, only 1 row of open leaves left on
9. Cabbage, Red - 1 head, only 1 row of open leaves left on
10. Carrots - 5 specimens, leaves removed to 2"
11. Cauliflower - 1 specimen
12. Celery, Green - 3 branches displayed in water
13. Corn, Bi-Colored - 3 ears with husks on and a one inch strip pulled down, trimmed butts
14. Corn, Popping - 3 ears with husks on and a one inch strip pulled down, trimmed butts
15. Corn, Indian - 3 ears with husks on and a one inch strip pulled down, trimmed butts
16. Corn, Sweet White - 3 ears with husks on and a one inch strip pulled down, trimmed butts
17. Corn, Sweet Yellow - 3 ears with husks on and a one inch strip pulled down, trimmed butts
18. Cucumber, Slicing - 2 specimens
19. Cucumber, English Seedless type - 2 specimens
20. Cucumber, Pickling - 3 specimens
21. Eggplant - 2 specimens
22. Garlic, 3 specimens with one inch stem - Hard neck
23. Garlic, 3 specimens w/ 1" stem - Soft neck
24. Kohlrabi - 3 specimens, with 1" of stem intact
25. Okra - 7 specimens
26. Onion, White - 3 specimens, trimmed
27. Onion, Red - 3 specimens, trimmed
28. Onion, Yellow - 3 specimens, trimmed
29. Parsnip - 3 specimens, leaves trimmed to 2"
30. Pepper, Green Sweet - 3 specimens
31. Pepper, Red Sweet - 3 specimens
32. Pepper, Yellow Sweet - 3 specimens
33. Pepper, Sweet, Any Other - 3 specimens
34. Pepper, Red Hot - 5 specimens
35. Pepper, Yellow Hot - 5 specimens
36. Pepper, Green Hot - 5 specimens
37. Pepper, Hot, Any Other - 5 specimens
38. Pepper, Red Pimento - 5 specimens
39. Potato, Red - 4 specimens
40. Potato, White - 4 specimens
41. Potato, Any Variety - 4 specimens
42. Pumpkin, Pie - 1 specimen with stem
43. Pumpkin, Field - 1 specimen with stem
44. Radish, Red - 5 specimens, leaves trimmed to 1"
45. Radish, White - 5 specimens, leaves trimmed to 1"
46. Rhubarb - 5 stalks, leaves removed
47. Rutabaga - 3 specimens - 2 leaves removed
48. Squash, Acorn - 2 specimens
49. Squash, Buttercup - 2 specimens

## HOME CANNING (continued)

50. Squash, Butternut - 2 specimens
51. Squash, Hubbard - 1 specimen
52. Squash, Summer Straight - 2 specimens
53. Squash, Summer Crookneck - 2 specimens
54. Squash, Scallop - 2 specimens
55. Squash, Zucchini, large cooking - 2 specimens
56. Squash, Zucchini, yellow, white or green -3 specimens, small for eating 5" to 7" long
57. Swiss Chard - 3 stalks, displayed in water

**TOMATO EXHIBITS SHOULD BE 60% OR MORE RIPE DEPENDING ON SEASON**

58. Tomato, Red, small fruited - 10 specimens
59. Tomato, Yellow, small fruited - 10 specimens
60. Tomato, Pink - 5 specimens
61. Tomato, Red, canning - 5 specimens
62. Tomato, Red, paste - 5 specimens
63. Tomato, Red, slicing - 5 specimens
64. Tomato, Yellow- 5 specimens
65. Turnip - 3 specimens, leaves trimmed to 2"
66. Vegetable, any other 3 specimens must be named (not listed in the book)
67. Tomato, any other - 5 specimens of the same kind

## BASKET DISPLAYS\*

### ENTRY RULES

- A. No more than 3 specimens of the same variety (exception - gourds)
- B. Note Garden Produce Entry Rules 2, 8 & 16. Rosettes awarded for all places.
- C. Class 71 and 72 shall not exceed 2 ft. in length, width or height.
- D. Class 73 shall not exceed 3 ft. in length, width or height

### Class

	1st	2nd	3rd
71. Best display of mixed vegetables* 7 or more FRESH specimens in basket	\$10.00	7.00	5.00
72. Best display of squash 5 or more in basket	\$5.00	3.00	2.00
73. Best display of gourds 10 or more in basket	\$5.00	3.00	2.00

## EDIBLE BOUQUETS\*

### ENTRY RULES

- A. Bouquets must consist of at least three different vegetables or fruits.
- B. Garden Produce Entry Rules 2, 8 & 16.
- C. Flowers may be included.

Rosettes awarded for all places.

### CLASS

	1st	2nd	3rd
74. Fruit Bouquet	\$10.00	\$7.00	\$5.00
75. Vegetable Bouquet	\$10.00	\$7.00	\$5.00
76. Fruit/Vegetable Combo	\$10.00	\$7.00	\$5.00

## ODD SPECIMENS\* SECTION 500

### ENTRY RULES

- A. Note Garden Produce Entry Rules 2, 8, 12, 13 & 14. Rosettes awarded to first place winners.

**Premiums: 1st - \$5.00; 2nd - \$3.00; 3rd - \$2.00**

### Class

1. Largest pumpkin - by circumference
2. Largest tomato - by weight
3. Longest zucchini squash - by length
4. Largest zucchini squash - by weight
5. Largest sunflower head - by diameter
6. Most unusual vegetable
7. Melon, water largest by weight
8. Melon, musk - any type - largest by weight
9. Largest garlic - by weight
10. Largest cabbage - by weight (no roots)
11. Tallest Corn Stalk
12. Largest Cucuzzi Squash (Italian)
13. Longest Cucuzzi Squash (Italian)
14. Tallest Sunflower
15. Tallest Weed
16. Ugliest Weed
17. Any other Squash
18. Most Unusual Gourd

## COMIC CARICATURE\*

### ENTRY RULES

- A. Made of firm EDIBLE vegetables/fruits. No soft, leafy foliage or DRIED PRODUCE permitted.
- B. No open or cut produce is permitted.
- C. Accessories or decorations used must be of natural origin.
- D. Produce need NOT BE GROWN by exhibitor.
- E. Size of entry not to exceed 18" across.
- F. Entry to be judged on creativity, uniqueness and appropriate use of materials.

**Premiums: 1st - \$6.00; 2nd - \$4.00; 3rd - \$3.00; 4th - \$1.00**

### Class

21. One fruit and/or vegetable caricature\*

## SEED PICTURE OR MOSAIC

### ENTRY RULES

- A. One seed picture or mosaic per entrant.
- B. Picture or mosaic not to exceed 18" x 24" in size.
- C. Must be made of 75% natural material.
- D. One show only.
- E. Must be made by entrant.

**Premiums: 1st - \$10.00; 2nd - \$7.00; 3rd - \$3.00; 4th - \$1.00**

### Class

22. Seed picture or mosaic

## "SCARECROWS" SECTION 600

### ENTRY RULES

- A. No taller than 6'.
- B. Must stand alone or be on wooden stake.
- C. No wider than 6'.
- D. No LIVE material.
- E. Theme: Field of Dreams (Baseball)
- F. Commercially made scarecrows are prohibited.



## HOME CANNING (continued)

- G. Scarecrows must be assembled by the exhibitor, but they may have help.

**Premiums: 1st - \$7.00 & Rosette; 2nd - \$5.00 & Rosette; 3rd - \$3.00 & Rosette; 4th - \$2.00; 5th - \$1.00**

### Class

1. Scarecrows

## GARDEN GROWING WHEELBARROW SECTION 700

### ENTRY RULES

- A. Growing area: Maximum 4'x4'.  
B. Plants need to be established.  
C. Minimum of 3 different fruit/vegetable/herb plants. (May contain flowers but do not count as the 3 plants required).

**Premiums: 1st - \$7.00; 2nd - \$5.00; 3rd - \$3.00; 4th - \$1.00**

### Class

1. Garden Growing Wheelbarrow

## SENIOR CITIZEN GARDENER SECTION 800

Open to exhibitors 65 years or older

A trophy and rosette will be awarded to best of show for a single entry selected by the judge(s) for each show.

### ENTRY RULES

1. Entrants MUST be 66 years of age or older at time of entry.  
2. All items exhibited MUST be cared for and/or grown by the exhibitor.  
3. No first show trophy, rosette, or blue ribbon winning entry is eligible for entry in second show.  
4. For pick up times see Entry Rule #8.

## VEGETABLE SPECIMENS\*

**Premiums: 1st - \$3.00; 2nd - \$2.00; 3rd - \$1.00**

### Class

1. Beans, any variety - 8 pods  
2. Beets - 2 specimens, leaves removed to 2"  
3. Cabbage - 1 specimen, open leaves left on  
4. Cucumbers - 2 specimens  
5. Garlic - 3 specimens with 1" stem  
6. Onion, any variety - 3 specimen with 1" stem  
7. Pepper, any variety - 2 specimens  
8. Potato - 3 specimens  
9. Pumpkins - 1 specimen with stem  
10. Sweet corn - 3 ears with husks on and 1 inch strip pulled down  
11. Squash, zucchini - 1 specimen  
12. Tomato, any variety - 3 specimens  
13. Tomato, cherry - 10 specimens  
14. Vegetable, any other - 3 specimens (3 of the same kind)  
15. Vegetable basket - 5 or more different FRESH specimens. Basket size: Length, width or height not to exceed 2 ft.

## APIARY BEES AND HONEY DEPARTMENT 27

### BUILDING 33

DENNIS ECK

Director-At-Large

### Overall Best of Show

Trophy and \$25.00 to be sponsored by  
Queen Right Colonies

### Trophy for Classes 202, 203 & 204

sponsored by Queen Right Colonies

### IMPORTANT DATES AND TIMES

#### BEES AND HONEY

Sat. before Fair - 12:00 Noon to 4:00P.M. - Entry Set-up

Sun. before Fair - 9:00 A.M. - 12:00 Noon - Entry Set-up

Sun. of Fair - 8:30P.M. - 10:00P.M. - Entry Pick-up  
(exhibitor tag required)

### ENTRY RULES

1. Only one entry will be permitted by an exhibitor for any one premium and no two exhibits in the same class shall be made by the same person or any member of his/her family from the same apiaries, or apiary.  
2. Honey judged on quality, cleanliness, color, aroma and moisture content.  
3. Bees and Queen judged for evenness in color and form, general appearance and educational value to the public. Queen and her bees shown on a frame of brood in observation hive.  
4. Sweetening used in baked goods and canned fruit must contain 50% honey. Recipe must be attached. Bring entry in zip-lock bag on disposable plate.  
5. Sweetening used in Honey Candy must contain a minimum of one-sixth honey. Candy and baked goods must be displayed in plastic bags or well-covered with clean film.  
6. Honey and honey products must be produced by the exhibitor within the past year - from fair year to fair year.  
7. The judge(s) may award a lower class prize or no prize for entries that are substandard.  
8. Honey may be purchased for products in Section 300.  
9. Set up Saturday, Noon - 4:00 P.M. or Sunday 9:00 A.M. - Noon.  
10. All exhibits/entries can be picked up on Sunday, the last day of the Fair, from 8:30 P.M. - 10:00 P.M. Exhibitor Tag required for pickup. Any exhibits not claimed will be disposed of at the discretion of the Director-At-Large or the Superintendent. Award ribbons not claimed will be available at the Fair Office the week following the Fair.

## HOME CANNING (continued)

### RULES

1. Space is limited and the number of displays may be capped if the number of entries exceeds the display space available.

### CLASS

	1st	2nd	3rd	4th
	\$100.00	75.00	50.00	25.00
	Rosette	Rosette	Rosette	Rosette
101. Individual booth display educational and/or advertising using modern equipment and/or techniques.				
102. Individual booth display demonstrating antique beekeeping practices using antique equipment, etc.				
103. Individual booth display for scholarship winner using educational, advertising and equipment etc. Rosette Only				

### To be judged as follows:

Educational and/or Advertising Value	35 points
Attractiveness and Arrangement	25
Quality of Product	25
Completeness of Display	15

### TOTAL

100 points

## BEE and HONEY DISPLAY SECTION 100

### SECTION 200

A trophy will be awarded to Best of Show for a single specimen in Section 200 & 300.

The winner will be selected by the judge(s) of the Divisions. Honey will be judged according to the PFUND scale used in the honey industry using a jacks scale.

### Class

	1st	2nd	3rd	4th
201. Observation hive - <i>honey bees and queen</i>	\$35.00	25.00	15.00	10.00
202. Extracted honey - water <i>white to white, 3 lbs. in 1 lb. glass honey jars, PFUND of 0-34mm</i>	\$6.00	4.00	3.00	2.00
203. Extracted honey, extra <i>light to light amber, 3 lbs. in 1 lb. glass honey jars, PFUND of 35-85mm</i>	\$6.00	4.00	3.00	2.00
204. Extracted honey, amber <i>to dark, 3lbs. in 1 lb. glass honey jars, PFUND of 86-114mm</i>	\$6.00	4.00	3.00	2.00
205. Creamed honey <i>Plain or Flavored - Minimum 18 oz. up to 3 lb. - in 6 oz or 1 lb wide mouth uniform jar with uniform lid</i>	\$6.00	4.00	3.00	2.00
206. Chunk honey - 1/2 cut <i>comb minimum, 3 lbs. in 1 lb. uniform round wide mouthed glass honey jar with uniform lid</i>	\$6.00	4.00	3.00	2.00
207. Extracting frames - <i>deep, 2 frames (Bee-proof container)</i>	\$8.00	7.00	5.00	4.00
208. Extracting frames - <i>shallow or medium, 7 1/4" or less, 2 frames (Bee-proof container)</i>	\$8.00	7.00	5.00	4.00

## BEES & HONEY (continued)

ENTRIES IN CLASS 201, 207, 208 MUST BE DISPLAYED IN BEE-PROOF CASES WITH SIDES MADE OF TRANSPARENT MATERIALS, GLASS OR PLASTIC. Frames must be removable to be judged.

### Class

	1st	2nd	3rd
209. Cut comb honey - 4 containers, <i>Ross Rounds in plastic containers</i>	\$5.00	3.00	2.00
210. Comb honey - round sections, <i>4 sections, 8 oz. or more per section in transparent plastic containers</i>	\$5.00	3.00	2.00
211. Beeswax- 1 piece, 8 oz. minimum	\$5.00	3.00	2.00
212. Specimen other than above	\$5.00	3.00	2.00

### SECTION 300

301. Honey candy - 5 pieces, <i>recipe attached</i>	\$5.00	3.00	2.00
302. Honey cookies - 6 cookies, <i>recipe attached</i>	\$5.00	3.00	2.00
303. Honey loaf cake - loaf or 1 layer, <i>light or dark, not frosted, recipe attached</i>	\$5.00	3.00	2.00
304. Honey yeast bread - 1 loaf, <i>recipe attached</i>	\$5.00	3.00	2.00
305. Honey bread - non-yeast, 1 loaf, <i>recipe attached</i>	\$5.00	3.00	2.00
306. Honey/Mead <i>in clear bottle 4/5 quart or 26 ounces, straight sided bottle; will be opened and tasted</i>	\$5.00	3.00	2.00
307. Novelty honey cooking - <i>quantity of product exhibited sufficient for a comparison, may include jellies (50% honey), granola, fruit leathers, etc. Recipe attached</i>	\$5.00	3.00	2.00
308. Fruit canned with honey - 3 jars, <i>all pints or quarts, recipe attached</i>	\$5.00	3.00	2.00
309. Specimen other than above	\$5.00	3.00	2.00

### SECTION 400

400. Honey gift package - total <i>package weight 8 lbs. or less. Must be honey bee related product with the exception of container, honey servers, cookbooks or decorations</i>	\$8.00	6.00	4.00
401. Hand Cream: 3-1 oz. clear <i>containers - recipe attached, % (percent) of wax - honey - other</i>	\$5.00	3.00	2.00
402. Soap products - 3 bars <i>1 oz. minimum weight each, handmade - lye - based, 3 uniform bars, recipe attached, % (percent) of wax - honey - other</i>	\$5.00	3.00	2.00
403. Honey Pot	\$5.00	3.00	2.00
404. Specimen other than above	\$5.00	3.00	2.00

## PHOTOS FEATURING BEES SECTION 500

Photos must be at least 5" x 7" and be matted

**Premiums provided by the GCBA**

### Class

	1st	2nd	3rd	4th
501. Flower with Honey Bee	\$10.00	8.00	5.00	3.00
502. Honey Bee hive (manmade)	\$10.00	8.00	5.00	3.00

## BEES & HONEY (continued)

503. Honey Bee hive (natural)	\$10.00	8.00	5.00	3.00
504. Swarm - Honey Bee	\$10.00	8.00	5.00	3.00
505. All other bee-related photos	\$10.00	8.00	5.00	3.00

# FLORAL DEPARTMENT DEPARTMENT 28

## BUILDING 33

**TOM SABREY**

Director-At-Large

**AMANDA HOLZMAN**

Superintendent

Standard Flower Show is the official title of a flower show conforming to standards established by National Garden Clubs, Inc. National Garden Club's Standard System will be used for all competitive judging and is found in the NGC Flower Shows Handbook 2007 edition. Decisions of the judges will be final. Exhibits may not be altered after the judging. Awards will be withheld if not merited.

This flower show is sponsored by Ridgewood Garden Club of Parma and Westlake Garden Club in cooperation with the Cuyahoga County Fair under the direction of Show Chair Tom Sabrey. Ridgewood Garden Club of Parma and Westlake Garden Club are members of Garden Club of Ohio, Inc., Central Atlantic Region and the National Garden Clubs, Inc.

The classes in sections 400 - 800 are exhibits in the Standard Flower Show. The Standard Flower Show is open to all exhibitors whether or not they are affiliated with a Garden Club.

## FLORAL BUILDING SCHEDULE

### ROSE SHOW

Exhibits should be brought in the morning of the show starting at 7:30 A.M. Judging will be 10:00 A.M. Thursday.

### CONTAINER GROWN PLANTS - Blooming & Foliage

Entries are accepted Saturday and Sunday preceding the Fair from 9:00 A.M.-4:00 P.M. and Monday from 7:30 A.M.-9:00 A.M. Judging will be Monday at 10:00 A.M.

### FAIRY GARDENS

Entries are accepted Saturday and Sunday preceding the Fair from 9:00 A.M. - 4:00 P.M. and Monday from 7:30 A.M. - 9:00 A.M. Judging will be Monday 10:00 A.M.

### CUT SPECIMEN BLOOMS - Annuals & Perennials

Entries accepted Tuesday from 7:30 A.M. - 10:00 A.M. Judging Tuesday at 10:30 A.M.

### DESIGN ARRANGEMENTS

Entries for the first show accepted Monday from 7:30 P.M. - 10:30 P.M. and Tuesday from 7:30 A.M. - 10:00 A.M. They may be picked

## FLORAL DEPARTMENT (continued)

up no earlier than Thursday 9:30 P.M. Judging Tuesday at 10:30 A.M. Entries for the second show accepted Thursday from 7:00 P.M. - 10:30 P.M. and Friday from 9:00 A.M. - 10:00 A.M. Judging Friday at 10:30 A.M.

### DAHIA SHOW

Entries accepted Saturday from 7:30 A.M.-10:45 A.M.

Judging Saturday 11:00 A.M.

All exhibits, ribbons, and premiums should be picked up Sunday, the last day of the Fair, between 8:30 P.M. and 10:00 P.M. (at this time the building will be closed to the public) or on Monday after the Fair in the Floral Building between 2:00 P.M. and 7:00 P.M.

ALL JUDGING IN THE FLORAL BUILDING AND DISPLAY GARDENS IS CLOSED TO THE PUBLIC.

## FLORAL DEPARTMENT ENTRY RULES

1. To exhibit you must purchase an Exhibitor Ticket which includes 2 complimentary gate admissions. Your one Exhibitor Ticket permits you to exhibit in all other Open Class Divisions or Departments of the Cuyahoga County Fair.
2. See Exhibitor Rules for entry deadline.
3. There are no class Entry Fees in this Department.
4. Eligibility To Exhibit:
  - a. Sections are open to all.
  - b. All cut specimen material must be grown by the Exhibitor.
  - c. Container specimens must be in Exhibitor's possession for three months.
5. Be sure to specify on your Entry Form if you are entering the first, second, or both shows.
6. Make check or money order payable to Cuyahoga County Fair and mail with your Entry Form to:  
Cuyahoga County Fair • P.O. Box 135 • Berea, Ohio 44017  
Your Exhibitor Ticket will be mailed to you. Your Entry Tags will be held for you at the Floral Building, ready to attach to your exhibit. They will not be distributed ahead of time.
7. The Entry Rules governing the Cuyahoga County Fair apply to this department.
8. In all classes the decision of the judges will be final.
9. When staging Horticultural specimens, the container should be in proportion to the size of the stem. Vase is equal to one third the size of the entry.
10. While the management will give all assistance possible in properly placing exhibits and safe-guarding them during the Fair, it in no way assumes any responsibility in case of loss.
11. All exhibits and ribbons should be picked up Sunday, the last night of the Fair between 8:30 P.M. and 10:00 P.M. or on Monday after the Fair in the FLORAL BUILDING between 2:00 P.M. and 7:00 P.M. Any exhibits, ribbons, and premiums remaining after Monday will be taken to the Fair Board Office and may be picked up the week following the Fair.
12. To insure proper identification, please attach a sticker with your name on it to the bottom of the container.
13. Entry tags must be attached to the exhibit, not laid on the table. Design Classes are the exception to this rule.
14. The Director-At-Large or Superintendent reserves the right to remove any unworthy entries.
15. An exhibitor may enter more than one entry in a HORTICULTURAL CLASS provided it is a different variety.
16. No plant shine is permitted on any of the container grown plants.

## FLORAL DEPARTMENT (continued)

17. No accessories are permitted in containers in the Horticultural section except dish gardens.
18. Judges are all Horticultural Specialists or they are Nationally Accredited Judges. All entries are individually judged against horticultural perfection, not against each other.
19. All exhibits must be kept fresh. Unsightly or wilted plants will be removed. The Director-At-Large or Superintendent may at any time remove an exhibit if deemed necessary.
20. Any horticultural entry entered in class as "other" MUST have the name of the plant written on the entry tag.

### SPECIAL AWARDS

The AWARD of HORTICULTURAL EXCELLENCE may be awarded to the exhibit judged as the finest in the entire Horticultural section. This award shall be represented by a rosette of green, orange and blue ribbons. This award, if merited, shall be given for ribbon only, no extra cash award. Sections 400 & 500 only.

The AWARD OF MERIT may be awarded to a blue ribbon winner scoring 95 or over in each of the designated sections. The Award of Merit shall be represented by a rosette of orange. This award, if merited, shall be given for ribbon only and no extra cash award. Entries eligible for this are Sections 400 - 700 only.

## GARDEN ART SECTION 100

**Premiums: 1st - \$15.00; 2nd - \$10.00; 3rd - \$8.00; 4th - \$5.00**

### Class

1. Window Box Display

### ENTRY RULES

- A. All materials to be grown and arranged by person whose name appears on entry form.
- B. All items to be correctly labeled.
- C. Window box to be up to two (2) feet in length.
- D. No advertising signs permitted on display.

### Class

2. Flower Pot caricatures

### ENTRY RULES

- A. Theme: **Wizard of Oz**
- B. Made out of a minimum of 3 clay or plastic pots
- C. Must contain live plants
- D. Can be embellished with paint, fabric, accessories, etc.
- E. Must be able to stand or sit unsupported

#### Winning tips for Garden Produce

- **Entry form postmarked by July 29th**
- **Observe entry drop off date(s)**
- **Monitor number of specimens per entry**
- **Collect the best of the best**
- **Make sure the specimens are clean and blemish free**
- **Trim foliage/stems as described**
- **GOOD LUCK**

## FLORAL DEPARTMENT (continued)

## TRASH GARDENING SECTION 200

The OSU Extension Master Gardeners-Cuyahoga County, Cuyahoga County Farm Bureau and Cuyahoga County Solid Waste District are sponsoring "Trash Gardening" at the Cuyahoga County Fair. This exhibit is open to all individuals, all ages. (no groups or businesses)

### ENTRY RULES

1. Entries are to consist of containers constructed for another purpose and now used to grow plants (e.g. pizza pan, lamp base, etc)
2. Container and plant are not to exceed 50 pounds.
3. Creative title must be visible on your entry.
4. Entry judging criteria will be available on the fair's website or at the fair office starting in June.
5. Entries accepted during drop off times for container plants (see page 26).
6. Note floral rules 1, 4, 10.
7. The OSU Extension Master Gardeners-Cuyahoga County, Cuyahoga County Farm Bureau and Cuyahoga County Solid Waste District are sponsoring "Trash Gardening" at the Cuyahoga County Fair.

Prizes are Sponsored by the Cuyahoga County Farm Bureau. A 1st, 2nd and 3rd will be awarded in each category and receive a Rosette.

**Premiums: 1st - \$15; 2nd - \$10; 3rd - \$5**

### Class

#### Ages 18 years & Older

1. Most Trashy
2. Most Beautiful
3. Most Creative

#### Ages up to 18 years

4. Most Trashy
5. Most Beautiful
6. Most Creative

To be judged as follows:

Uniqueness of container	20 points
Creativity and originality	20
Arrangement and selection of plants	20
Creative title	10

**TOTAL**

**70 points**

## SPECIMEN BLOOMS SECTION 300

### ROSES • ONE SHOW

#### A.R.S. Rules

### PLANT SOCIETY EXHIBIT

#### Judging

**10:00 A.M., Thursday, of Fair Week**

## FLORAL DEPARTMENT (continued)

### COURT OF HONOR

1. **QUEEN OF SHOW** (Hybrid Tea)  
Award: Rosette and \$5.00
2. **BEST MULTIPLE BLOOM** (Large Roses)  
Award: Rosette and \$5.00
3. **QUEEN OF SHOW** (Miniature/Miniflora)  
Award: Rosette and \$5.00
4. **BEST MULTIPLE BLOOM** (Miniature/Miniflora)  
Award: Rosette and \$5.00

For information on entering roses call consultant  
Jeff Sommer - (216) 476-3068 - jsomrore@aol.com

### ENTRY RULES

1. One Show - Forest City Rose Society
2. A.R.S. Rules, Plant Society Exhibit
3. Label all varieties.
4. This section will be set up Thursday of the Fair.
5. Exhibitor must complete entry form.  
Enter Dept. 28, Section 300, Class 1 Roses
6. For a complete Rose Show List  
Contact the C.C.F. Office at (440) 243-0090

## BLOOMING CONTAINER GROWN SPECIMEN PLANTS SECTION 400

### Best of Show Rosette & \$7.50

Entries accepted Saturday & Sunday, preceding the Fair, from  
9:00 A.M. - 5:00 P.M. and Monday from 7:30 A.M. to 9:00 A.M.

### ONE SHOW ONLY

**Judging: 10:00 A.M., Monday**  
**Plants must remain until Sunday,**  
**closing day of the Fair.**

### ENTRY RULES

1. All plants must have been in exhibitors' possession at least three months. Plants MUST be in bloom.
2. Plants must be labeled as to variety. Botanical or common name may be used.
3. All plants must be insect and disease free.
4. There can be one or more plants per pot unless otherwise specified. Clay or plastic pots are preferred over decorative pots.
5. Exhibitor may enter one specimen per class.
6. Exhibitor is requested to enter plant in the proper class.
7. Fourth place receives Honorable Mention with ribbon only.
8. All entry requirements of the Cuyahoga County Fair and the Floral Department entry rules apply.
9. Containers must be clean or they will be disqualified.

## FLORAL DEPARTMENT (continued)

### JUDGING SCALE

**Saint Paulia  
(African Violets)**  
Leaf symmetry . . . . . 25  
Health & Vigor . . . . . 25  
Quantity of Bloom. . . . . 25  
Size & type Bloom. . . . . 15  
Color . . . . . 10  
**Total Points . . . . . 100**

**Other  
Flowering Plants**  
Overall beauty . . . . . 40  
Health & Vigor . . . . . 35  
Quantity of Bloom. . . . . 25  
**Total Points . . . . . 100**

**Foliage Plants**  
Cultural perfection . . . 40  
Health & Vigor . . . . . 35  
Ornamental value . . . 25  
**Total Points . . . . . 100**

### SAINTPAULIA - (AFRICAN VIOLETS) DOUBLE BLOSSOM

**Premiums: 1st - \$4.00; 2nd - \$3.00; 3rd - \$2.00;  
4th - Honorable Mention Ribbon Only**

#### Class

- 1 Single blooms - solid color
- 2 Double blooms - solid color
- 3 Bicolor and two tones
- 4 Miniature single or double
- 5 Miniature - trailing

### OTHER FLOWERING PLANTS

**Premiums: 1st - \$4.00; 2nd - \$3.00; 3rd - \$2.00**

#### Class

- 6 Sinningia (Gloxinia)
- 7 Streptocarpus (Cape Primrose)
- 8 Episcia (Flame Violet or Lace Flower)
- 9 Begonia (any variety)
- 10 Hanging Basket with Flowering Houseplants  
(all one color)
- 11 Hanging Basket with Flowering Houseplants  
(mixed colors)
- 12 Hanging Basket with Flowering Annuals (all one color)
- 13 Hanging Basket with Flowering Annuals (mixed colors)
- 14 Orchids
- 15 Geraniums
- 16 Woody Plants in Bloom (azalea, gardenia, citrus, etc.)
- 17 Other flowering plants in bloom not listed



**Did you know? . . .**

**We have a Wind Turbine!**

**Experience the power of the wind  
through our 262 foot tall, 500 kW  
wind turbine.**

**Our 2,000 sq. ft. Sustainability Center  
is full of energy efficient elements.  
Visit during the fair to see it all.**



## CONTAINER SPECIMEN PLANTS GROWN PRIMARILY FOR FOLIAGE SECTION 500

### Best of Show Rosette & \$7.50

Entries accepted Saturday & Sunday, preceding the Fair, from 9:00 A.M. - 4:00 P.M. and Monday from 7:30 A.M. to 9:00 A.M.

### ONE SHOW ONLY

**Judging: 10:00 A.M., Monday**

#### ENTRY RULES:

Same as Section 400

**Premiums: 1st - \$4.00; 2nd - \$3.00; 3rd - \$2.00**

#### Class

**Container grown in hanging baskets. Hanging basket must be capable of supporting the full weight.**

1. Hanging baskets/pots with foliage
2. Hanging baskets/pots with vines
3. Hanging baskets/pots with ferns
4. Hanging baskets/pots with Wandering Jew Family
5. Hanging Asparagus densiflorus "Sprengeri"

#### Container grown NOT in Hanging Baskets

6. Woody or semi-woody viny or trailing type (English Ivy, Creeping Fig, Wax Plant, etc.)
7. Herbaceous or succulent vine or trailing excluding aroids (Swedish Ivy, Wandering Jew, Rosary Plant, etc.)
8. Aroids - upright types (Chinese Evergreens, Dieffenbachia)
9. Aroid - trailing type (Philodendron, Monstera, Pothos, Nephthytis, etc.)
10. Over 8" Herbaceous plants with variegated foliage (Coleus, Pileas, Maranta, Fittonia, Caladium, etc.)
11. Under 8" Herbaceous
12. Woody or semi-woody plants with variegated foliage (Croton, Draceana, Acalpha, etc.)
13. Echinocactus
14. Opuntia (cactus)
15. Notocactus
16. Schlumbergera - Zygocactus
17. Mammallaria - cactus
18. Cactus - any other
19. Jade Solid color
20. Jade - variegated
21. Jade - miniature leaf
22. Succulent other than Jade
23. Euphorbia
24. Dish Garden - variety of mixed growing plants (non- cactus)
25. Culinary Herb
26. Medicinal Herb
27. Aromatic Herb
28. Any other plant diameter smaller than 8" pot
29. Any other plant diameter 8" - 16" pot
30. Any other plant diameter larger than 16" pot
31. Cactus garden - (mixed cactus plants)
32. Herbaceous plants with variegated foliage (combination 1+ variety in same container)

33. Plants grown in unusual container not to exceed 18" pot in diameter

#### Class 33-36 Aquatic Plants: bring in a container with water

34. Herb
35. Fruit or Vegetable
36. Foliage
37. Flowering Plants

## CUT SPECIMEN BLOOM - ANNUALS SECTION 600

### Court of Honor

Best of Show Rosette & \$7.50

Enter Annuals on Tuesday Only

Entries Accepted Tuesday of Fair from 7:30 A.M. - 10:00 A.M.

### ONE SHOW

**Judging: 10:30 A.M., Tuesday**

#### ENTRY RULES

1. See Entry Requirements and Floral Department Entry Rules.
2. This section will be set up for Tuesday.
3. All annuals should be named with variety, if possible.
4. Floral Department supplies containers. The only exception is Sunflowers. The exhibitor must provide their own container.
5. Foliage should not be BELOW WATER LINE, but all stems must include some foliage.
6. Inconspicuous wedging is permitted where necessary.

**Premiums: 1st - \$3.00; 2nd - \$2.00; 3rd - \$1.00;  
4th - Honorable Mention Ribbon Only**

#### Class

1. Ageratum, 3 stems
2. Aster, 3 stems, one color or mixed
3. Calendula, 3 stems, one color or mixed
4. Carnation, 3 stems, one color or mixed
5. Celosia, 3 stems
6. Cleome, 3 stems
7. Cosmos, 3 stems
8. Dwarf bedding Dahlias, 3 stems
9. Geranium, 3 stems
10. Lantana
11. Marigold, dwarf French, double, 3 stems
12. Marigold, dwarf French, single, 3 stems
13. Marigold, large, 3 blooms up to 2 1/2"
14. Marigold, large, 3 blooms 2 1/2" or over
15. Petunia, double flowered, one variety, 3 stems
16. Petunia, grandiflora, one variety, 3 stems
17. Petunia, multiflora, plain edged, one color, 3 stems (small flowers)
18. Petunia, 3 stems, bi-color any variety
19. Petunia, single, 3 stems
20. Salvia, 3 stems
21. Scabiosa, 3 blooms
22. Snapdragons, one variety, 3 spikes
23. Sunflower - Yellow, one bloom, 1 container
24. Sunflower - Red/Orange, one bloom, 1 container
25. Sunflower - other
26. Tuberous begonia, 3 blooms, any color

## FLORAL DEPARTMENT (continued)

27. Tuberous begonia, single, 3 blooms, any color cut SPECIMEN (continued)
28. Zinnia, Dahlia flowered, one color, 3 stems
29. Zinnia, cactus, one color, 3 stems
30. Zinnia, pompom, one color, 3 stems
31. Verbena, any color, 3 stems
32. Impatiens - 3 stems
33. Gladiolus - 1 stem
34. Dahlia
35. Herb - Annual (basil, cilantro, dill, parsley))
36. Any other annual not mentioned, 3 stems

\*\*\*Blossoms in this class must be labeled with name

### CUT SPECIMEN BLOOMS - PERENNIALS SECTION 700

#### Court of Honor

#### Best of Show Rosette & \$7.50

Enter Perennials - Tuesday Only

Entries Accepted Tuesday from 7:30 A.M. - 10:00 A.M.

#### ONE SHOW

Judging: 10:30 A.M., Tuesday

#### ENTRY RULES

1. Label all varieties.
2. This Section will be set up for Tuesday.
3. See Entry Requirements and Floral Department Entry Rules.
4. Foliage should NOT be below water line.
5. Inconspicuous wedging is permitted where necessary.

Premiums: 1st - \$3.00; 2nd - \$2.00; 3rd - \$1.00;  
4th - Honorable Mention Ribbon Only

#### Class

1. Chrysanthemums, 3 stems
2. Delphinium, 3 stems
3. Heliopsis, 3 stems
4. Liatris, 3 stems
5. Monarda, 3 stems
6. Phlox, 3 spikes
7. Rudbeckia, 3 stems
8. Shasta Daisy, 3 stems
9. Tritoma, 3 stems
10. Hybrid Lilies, 3 stems
11. Hemerocallis - Daylilies, 3 stems
12. Gallardia, 3 stems
13. Echinacea - Coneflower, 3 stems
14. Wildflower
15. Hosta (solid, any variety) leaf under 5"
16. Hosta (solid, any variety) leaf over 5"
17. Hosta (variegated, any variety) leaf under 5"
18. Hosta (variegated, any variety) leaf over 5"
19. Hydrangea
20. Hibiscus
21. Herb - Perennial (sage, chives, mint, thyme, etc.)
22. Any other perennial not listed above, 3 stems

\*\*\*Blossoms in this class must be labeled with name

## FLORAL DEPARTMENT (continued)

### DESIGN ARRANGEMENTS SECTION 800

#### TWO SHOWS

#### STANDARD DIVISION

#### Material exhibited to show arrangement of Flowers, Foliage and Container

#### Entries accepted:

First show: Monday 7:00 P.M. - 10:30 P.M.  
or Tuesday 9:00 A.M. - 10:00 A.M.  
Second show: Thursday 7:00 P.M. - 10:30 P.M.  
or Friday 9:00 A.M. - 10:00 A.M.

#### ENTRY RULES

1. Entry tags must be placed with the exhibit. They need not be attached.
2. No one will be permitted more than one entry per class.
3. Materials need not be grown by the exhibitor.
4. No artificial flowers, foliage, vegetables, or fruit permitted. No cut fruits or vegetables permitted.
5. Accessories are permitted in all classes with the EXCEPTION of the American Flag or any other National Flag. Since proper Flag etiquette is difficult to determine in design, the NCSGC judges have made this request.
6. Honorable Mention for 4th ribbon.
7. Repeating the same arrangement in 2nd show will automatically disqualify exhibitor.
8. Novice classes are for participants who have not won a blue rosette in a previous flower show.
9. Novice Classes are Show 1 - Class 2 + 5 and Show 2 - Class 4 + 6.
10. All entries are to be artistic arrangements as known to flower arrangers, that is, an interpretation of the theme; it should not be a scene.
11. This schedule is meant to bring out exhibits that are suggestive of the titles in each class.
12. Design is limited to 24" wide. There is no height limit, but design must be in proportion.
13. The use of any part of plants on the state conservation list is strictly prohibited and the arrangement will be disqualified.
14. All entries must be kept in good show condition or they will be removed by the Director-At-Large.
15. Entries from the First show should be picked up after 8:00 P.M. Thursday evening or Friday before 10:00 A.M.
16. See CCF Entry Requirements and Floral Department Entry Rules.

The judging criteria will be based on the following: Color combination, Proportion and balance, Creative expression, Distinction and originality, Suitability of material in relation to containers, Design in all elements and principles, and interpretation of the theme.

#### ALL CLASSES

1st prize- \$5.00, 2nd prize- \$4.00, 3rd prize-\$3.00,  
4th prize- Honorable Mention - Ribbon Only

## FLORAL DEPARTMENT *(continued)*

### BEST ARRANGEMENT - EACH SHOW

1st - \$7.50 & Rosette, 2nd- \$5.00 & Rosette,  
3rd- \$2.50 & Rosette

*Judging for both shows will begin at 10:30.*

### DESIGN ARRANGEMENTS

**Theme: Book Club**

#### Class 1 **Mystery**

Show 1- Agatha Christie novels  
Show 2- Sherlock Holmes

#### Class 2 **Science Fiction**

Show 1- Star Wars  
Show 2- Star Trek

#### Class 3 **Fiction**

Show 1- Danielle Steel  
Show 2- J.K. Rowling

#### Class 4 **Biography**

Show 1- Movie Star  
Show 2- Television Star

#### Class 5 **History**

Show 1- World History  
Show 2- American History

#### Class 6 **Astrology**

Show 1- Zodiac  
Show 2- Chinese Zodiac

#### Class 7 **Suspense/Thriller**

Show 1- Alfred Hitchcock  
Show 2- Stephen King

#### Class 8 **Poetry**

Show 1- Shakespeare  
Show 2- Edgar Allen Poe

*\*All dried materials to be natural. Minimum of artificial color permitted.*

## FAIRY GARDENS SECTION 900

### JUDGING: 10:00 A.M., MONDAY

Entries are accepted Saturday and Sunday preceding the Fair from 9:00 A.M. to 4:00 P.M. and Monday from 7:30 A.M. to 9:00 A.M.

#### ENTRY RULES

1. Plants to be in proportion to container.
2. Container no larger than 24" in diameter.
3. Fairy novelties optional.
4. All plants must be alive.

*Judging will be based on the following:*

- Creativity & originality
- Uniqueness of container
- Scale of plants

**1st prize- \$4.00, 2nd prize- \$3.00, 3rd prize- \$2.00**

#### Class

1. Fairy Garden: made by an adult
2. Fairy Garden: up to 18 years of age

## FLORAL DEPARTMENT *(continued)*

## DAHLIA PLANT SOCIETY EXHIBIT SECTION 1000

### Dahlia Society of Ohio Cuyahoga County Fair Dahlia Show *Judging: 11:00 A.M., Saturday*

#### ENTRY RULES

1. See Entry Requirements and Floral Department Entry Rules.
  2. All Entries shall be judged in accordance to the Official Joint American Dahlia Society and Central States Dahlia Society Classifications.
  3. Variety name must be on each entry tag.
  4. More than one entry in a class IS allowed.
  5. Pre-registration of varieties or entries is not necessary.
  6. Containers and entry tags will be furnished at the show.
  7. All exhibitors must register by purchasing an Exhibitor's Ticket.
  8. Court of Honor winners will be picked from Classes 1 through 76 except Grand Champion and Reserve Champion which will be chosen from the Court of Honor.
  9. The Grand Champion and the Reserve Champion will each receive a trophy in addition to the Premium money and Rosette.
  10. Exhibitors must complete Entry Form.
- Enter Dept. 28, Section 1000, Class 1 Dahlias

**For a complete DAHLIA LIST - Contact the  
CCF Office at 440-243-0090**

## JUNIOR FAIR DEPARTMENT 37

### BUILDING 38

#### THEME: "GAME ON!"

#### HOLLY EVERHART

Director-At-Large

**Alison Ungar**

Superintendent

*email: ccfjrfair@yahoo.com*

#### PARTICIPATING ORGANIZATIONS

- Boy Scouts
- OSU Extension 4-H
- Girl Scouts
- Cleveland Metropolitan School District
- International Order of Rainbows for Girls
- DeMolay
- FFA

DEPT 28

JUNIOR FAIR

## JUNIOR FAIR IMPORTANT DATES AND TIMES

Friday, July 22	Ambassador applications due at end of day
Friday, July 29	Entry forms due at end of the day
Friday, August 5	12:00 P.M. to 6:00 P.M.*. - Entries (except culinary) accepted in Junior Fair Bldg. *Note New Time
Saturday, August 6	9:00 A.M. to 4:00 P.M. - Entries accepted (except culinary) in Junior Fair Building
Sunday, August 7	9:30 A.M. to 11:30 A.M. - Culinary entries only accepted

### NO ENTRIES ACCEPTED AFTER 4:00 P.M. SATURDAY EXCEPTION: CULINARY ENTRIES ACCEPTED ON SUNDAY

Sunday, August 7	Judging of Open Class entries - Closed to public
Sunday, August 14	Entries may be picked up from 8:30 P.M. to 10:00 P.M.
Monday, August 15	All entries must be picked up between 9:00 A.M. to 2:30 P.M.

## JUNIOR FAIR SPECIAL EVENTS

There are many special activities and contests for children, pre-teens and teens going on throughout the Fair. Unless otherwise noted all contests will be held in or around the Junior Fair Building. They are open to all youth, with age divisions noted under each section. See the section where the activity is listed for registration details. There is a minimum of three participants in each division or contest. Junior Fair officials have the right to alter, add or cancel any event in the interest of the Junior Fair Department and Cuyahoga County Agricultural Society.

Look for details on these exciting events during fair week.

### PROJECT RUNWAY

#### No-sew Garment Fashion Show

**Tuesday, 6:00 P.M. - 8:00 P.M.**

*See section 500 for details.*

### DRAWING CONTEST

**Wednesday, 10:00 A.M.**

*See Section 600 for details.*

### CREATIVE WRITING CONTEST

**Wednesday, 10:00 A.M.**

*See Section 600 for details.*

### JUNIOR FAIR DANCE

**Friday, 9:00 P.M. to 11:00 P.M.**

### DAILY ACTIVITIES AND GAMES

*See [www.cuyfair.com](http://www.cuyfair.com) for most current lists*

## GENERAL RULES and REQUIREMENTS FOR JUNIOR FAIR DEPARTMENT

Please observe all General Rules and Requirements for exhibits as found in the front of this book with the exception and addition of the following.

1. Only one entry per class unless noted otherwise.
2. There are NO ENTRY FEES in the Junior Fair Department 37. No gate passes are included.
3. Junior Fair participants must be 19 years of age or younger as of January 1 of the current year except where noted.
4. All entries must be made using the Junior Fair Entry Form or facsimile or the individual cut-out entry forms found in this section of the premium book. Additional books and forms are available at:  
Cuyahoga County Fair • P.O. Box 135 • Berea, Ohio 44017
5. The forms can be photocopied. A separate entry blank must be used by each exhibitor. Entry forms must be signed by the exhibitor AND their parent or guardian unless the exhibitor is 18 years of age or older. Entry forms are also available on line at [www.cuyfair.com](http://www.cuyfair.com).
6. Entry forms must be received in the Fair Office by the end of the work day on Friday, July 29, 2022. Excluding the daily special events.
7. Open Class exhibits should be brought to the Junior Fair Building, located adjacent to Gate #5 off the Bagley Road Entrance, either Friday, Aug. 5 from 12:00 P.M. - 6:00 P.M., or Saturday, Aug. 6 from 9:00 A.M. - 4:00 P.M. - NO ENTRIES ACCEPTED ON SUNDAY except Culinary from 9:30 A.M. - 11:30 A.M.
8. Judging will be on Sunday preceding the Fair and is closed to the public. Decision of the judges is final.
9. The Junior Fair Board does not assume responsibility for lost, stolen or broken objects.
10. All participants will be awarded a Participation Ribbon. At the discretion of the judges, a special Award of Excellence rosette and cash award may be awarded to any entry considered exceptional.
11. Exhibits must remain in place until the end of the Fair or released by the Fair Management. Any exhibit not in place for the full term SHALL FORFEIT any premium and/or award. Special consideration to the above rule can only be given when a written request is submitted in advance of the time of the entry.
12. **ALL EXHIBITS ARE TO BE THE WORK OF THE ENTRANT, NO GROUP PROJECTS SHOWN. EXHIBITS SHOULD HAVE BEEN DEVELOPED/PRODUCED BETWEEN SEPTEMBER OF THE PRECEDING YEAR AND AUGUST OF THE CURRENT YEAR.**
13. Exhibits are subject to examination by a competent committee of Fair Board personnel to determine fitness for family exhibition purposes. Entries found to be unfit for any reason will be declared ineligible and not shown. The judges retain the right to refuse a premium award to any class or department. Judges are permitted to move an entry to another class if deemed necessary for the good of the exhibitor.



## JUNIOR FAIR (continued)

14. Every precaution will be taken to protect animals, exhibits, exhibitors and the general public from loss or injury. Fair Management will not be held responsible.
15. Any exhibit not removed from the Junior Fair Building by 2:30 P.M. on Monday the day after the Fair will be taken to the Fair Office and held for seven (7) days.
16. All exhibits and contests are subject to additional rules and requirements printed in each class.
17. **Questions? Please contact the Director-At-Large of the Department, Holly Everhart at [cfjrfair@yahoo.com](mailto:cfjrfair@yahoo.com).**

### **PARTICIPATING ORGANIZATIONS**

#### **4-H YOUTH DEVELOPMENT**

**Ohio State University Extension**

**Cuyahoga County**

**12200 Fairhill Road • Cleveland, OH 44120**

**(216) 429-8200**

**Jackie Kirby-Wilkins, Associate Dean, College of Food, Agricultural, and Environmental Sciences;  
Director-At-Large, Ohio State University Extension**

4-H is a community of young people across America who are learning leadership, citizenship, and life skills.

The Ohio State University, The United States Department of Agriculture, and Cuyahoga County participating

OSU Extension embraces human diversity and is committed to ensuring that all research and related educational programs are available to clientele on a nondiscriminatory basis without regard to age, ancestry, color, disability, gender identity or expression, genetic information, HIV/AIDS status, military status, national origin, race, religion, sex, sexual orientation, or veteran status. This statement is in accordance with United States Civil Rights laws and the U. S. D. A.

**Jackie Kirby Wilkins, Associate Dean, College of Food, Agricultural, and Environmental Sciences; Director-At-Large, Ohio State University Extension.**

For deaf and hard of hearing, please contact Ohio State University Extension using your preferred means of communication (e mail, real services, or video relay services). Phone 1-800-750-0750 between the hours of 8:00 A.M. and 5:00 P.M. Monday through Friday. Inform the operator to dial 1-614-292-6181.

4-H reaches youth across Cuyahoga County with programs designed to:

- Establish sustainable relationships with caring adults and other youth
- Encourage community service and citizenship;
- Develop marketable skills in youth and a vision of a successful future;
- Promote and build upon experiences with persons from diverse backgrounds; and
- Strengthen communities by developing volunteer skills in youth and adults.

4-H programs work through community clubs with local volunteers and can also take place within schools or other organizations. We invite you to explore our website to learn more! <https://cuyahoga.osu.edu/program-areas/4-h-youth-development/cuyahoga-county-4-h>

**ITEMS ENTERED INTO "OPEN CLASS" CATEGORIES CANNOT BE COUNTED AS ENTRIES IN 4-H PROJECT CLASSES; DIFFERENT ITEMS MUST BE SUBMITTED FOR EACH DIVISION ENTRY.**

## JUNIOR FAIR (continued)

### **CUYAHOGA COUNTY**

#### **4-H ANIMAL SCIENCE AUCTION**

**Selling the County's Best 4-H Market Project Animals**

Chickens • Turkeys • Steers • Lambs • Hogs • Rabbits

**Cuyahoga County Fairgrounds**

**Saturday, August 13, 2022, 7:00 P.M.**

The Auction will be held in the Cow Palace, located just inside Gate #5 on the Cuyahoga County Fairgrounds. Plan to attend and support the 4-H club members. These young people are the future leaders of our community.

The animals to be sold have been fed and prepared for sale by 4-H club members. Their parents have been your patrons for many years, and now you can show your appreciation for their patronage by supporting the auction. Plan to purchase this quality livestock either for resale or processing at the locker plant of your choice. The good will and advertising you create will benefit you and the 4-H members.

This is a "partial terminal" sale. Grand champion and reserve champion steers, lambs and hogs purchased are to go directly for processing as meat animals (per Ohio Department of Agriculture regulations). Most of the remaining animals sold are also processed for meat as well. Any animal purchased and donated back to a 4-H member is not eligible to be shown by the exhibitor or any other 4-H member in any county, independent, or state fair outside of Cuyahoga County.

**Terms:** Cash or credit card with proper identification the day of the auction.

And a special thanks to the Cuyahoga County Farm Bureau for their support of all our 4-H Market Project participants.

For information on how to sponsor next years Fair, please contact Holly Everhart at [ccfjrfair@yahoo.com](mailto:ccfjrfair@yahoo.com)



#### **LAKESHORE COMPACT FFA**

22800 Fox Avenue • Euclid, Ohio 44123

instagram & Twitter: @lsc\_urban\_ag

The mission of the Lakeshore Compact FFA Club is to prepare the next generation of agricultural leaders so they can meet the challenges presented by food insecurity, social inequality, and climate change by learning and applying fundamental animal and plant science, leadership, communication, and workplace skills. Junior and Seniors from Euclid, Mentor, and Wickliffe learn and work on our school farm in Euclid and are then helped on to a career and college opportunities. Come grow with us!



## JUNIOR FAIR (continued)

### 4-H and the Cuyahoga County Fair Board wish to THANK the following 2021 Junior Fair Livestock Buyers and Auction Supporters:

Allstate Insurance	Strongsville
Banyan Tree	Cleveland
Brecksville Kids Dentistry	Brecksville
Cossel Farm	N. Royalton
Creekside Engineering	Valley View
Cuyahoga County Fair Board	Berea
Cuyahoga County Farm Bureau	N. Royalton
Grand Slam Picks	Berea
Greystone Veterinary Hospital	Seven Hills
Keller Pressure Washing	Strongsville
Kelling Equipment Repair Inc.	Wellington
Living Tree Center for Healing	N. Royalton
Local Legends Moving	Parma
Mattes Landscaping	N. Royalton
North Royalton Animal Hospital	N. Royalton
Nurse Practitioner Health Services	Strongsville
Peth's Landscaping	Medina
Phoenix Ink & Beauty	Amherst
Plogger Transport	N. Olmsted
Welling Farms	Permberville
Mary Bryk	Broadview Hts.
Olbianowska Cyprinska	Broadview Hts.
Beth Durda	Brecksville
Jacob Durda	Brecksville
Paul and Kathy Hechko	Columbia Station
Rita Irish	Broadview Hts.
Daniel Hines	Cleveland
Charlie Hosta	Seven Hills
Rebecca Koranda	Parma
Angieszka Malgorzaten	Broadview Hts.
Cecelia Martin	Cleveland
Dean Petersen	Magnolia
Robin and Bennett Pierce	N. Royalton
Tom Sabrey	Strongsville
Amanda Stack	Berea
Katherine Szczepanek	Westlake
Jackie & Brian Welch	Richfield

**We also thank the  
Cuyahoga County Farm Bureau for their  
continuing support of our 4-H Market Livestock Program**

## THE BASIC PRINCIPLES OF A DeMOLAY

- Love of parents
- Respect for others, their beliefs, their opinions, the things they hold sacred
- Courtesy towards everyone
- Friendship
- Faithfulness
- Cleanness in thought and action
- Patriotism



**For more information, contact:  
Denbrook Chapter in Berea, OH  
Mr. David Cazan • (440) 886-1453**

dcazan@aol.com

## JUNIOR FAIR (continued)



### CHANGE LIVES!

#### RAINBOW GIRLS AND PLEDGES CAN:

*Do you like helping others?*

*Want to make new friends?*

*Want to try new things?*

*Polish your public speaking?*

Then Rainbow is for you! The International Order of the Rainbow for Girls offers young ladies, ages 6-20 the unique opportunity to do all of these things and so much more!

**For more information, please email - [District7Rainbow@gmail.com](mailto:District7Rainbow@gmail.com)**

**girl scouts**  
of north east ohio

**Serving Girls in 18 Counties**

One Girl Scout Way • Macedonia, OH 44056-2156

Telephone: 800-852-4474 • [www.gsneo.org](http://www.gsneo.org)



## BOY SCOUTS OF AMERICA

**Lake Erie Council**

2241 Woodland Avenue • Cleveland, Ohio 44115

Telephone: 216-861-6060

For more information, please contact the Greater Cleveland Council at [www.lecbbsa.org](http://www.lecbbsa.org)

## OPEN CLASS HORTICULTURE SECTION 100

**Note: Rules and requirements at the beginning of Junior Fair section.**

**Best of Horticulture \$7.00 & Rosette**

### BEGINNER

**Age through 7 years as of January 1 of current year.**

**Premiums: 1st - \$3.00; 2nd - \$2.00; 3rd - \$1.00**

## JUNIOR FAIR (continued)

### Class

- 100 Garden Flower Specimen; 3 blooms same variety in clear glass container.
- 101 Seed Mosaic. Picture made with seeds, all natural no coloring
- 102 Caricature: Fruit and/or vegetable. All natural materials. No soft/leafy vegetables. Fruit: only oranges and apples.
- 103 Garden Specimen: Vegetable.
- 104 Houseplant: Growing in container for at least three months.
- 105 Fairy Garden

## JUNIOR

**Ages 8-13 as of January 1 of current year.**

**Premiums: 1st - \$3.00; 2nd - \$2.00; 3rd - \$1.00**

### Class

- 130 Seed Mosaic - Picture made with seeds, all natural no coloring
- 131 Garden flower Specimens: 3 blooms same variety in clear glass container
- 132 Garden Vegetable Specimen\*
- 133 Caricature: Fruit and/or vegetable. All natural materials. No soft/leafy vegetables. Fruit: only oranges & apples.
- 134 Hanging basket: Grown in container for at least two months. Indoor/outdoor specimen
- 135 Fairy Garden

## SENIOR

**Ages 14-19 as of January 1 of current year.**

**Premiums: 1st - \$3.00; 2nd - \$2.00; 3rd - \$1.00**

### Class

- 160 Garden Flower Specimens: 3 blooms same variety in clear glass container
- 161 Garden Vegetable Specimens\*
- 162 Caricature: Fruit and/or vegetable. All natural materials. No soft/leafy vegetables. Fruit: only oranges & apples.
- 163 Fairy Garden - Must contain miniature live plants and decorative figures

**\*Vegetable Specimens - small 3 same variety; large - 1 per plate**

## OPEN CLASS ARTS AND CRAFTS SECTION 200

**Review rules and requirements at beginning of Junior Fair section.**

### ADDITIONAL RULES AND REQUIREMENTS AS FOLLOWS:

- 1. No Wood / Plastic Frames
- 2. ALL ART MATERIALS, POSTERS AND PHOTOGRAPHS MUST BE MATTED OR MOUNTED ON A FIRM BACKING AND READY TO HANG. NO GLASS PERMITTED. WIRES, CORDS, OR HANGERS MUST BE ATTACHED SECURELY.
- 3. Maximum overall dimension of any painting/picture shall not exceed 18" x 21" x 18", including matt.
  - Push pins will be used to hang when necessary
- 4. Valuable items should be boxed under glass/plastic.
- 5. Limit of one entry per class per child.
- 6. No names on the front of any project.
- 7. No craft or art project shall exceed 18" x 21" x 18", except for woodworking class numbers.

## JUNIOR FAIR (continued)

- 8. Photographs are to be 5"x7" size securely mounted on 8"x10" mat.

**Best of Photography - \$7.00 & Rosette**

**Best of Painting / Drawing - \$7.00 & Rosette**

### BEGINNER

**Age through 7 years; as of January 1 of this year.**

**Premiums: 1st - \$3.00; 2nd - \$2.00; 3rd - \$1.00**

### Class

- 201. Painting, any medium
- 202. Drawing, any medium - no paint
- 203. Print Making, any medium
- 204. Paper Craft
- 205. Sculpture, any medium - handmade
- 206. Ceramics, fired - handmade / wheel thrown
- 207. Mask Making, any medium
- 208. Duct Tape Creation, 90% duct tape
- 209. Recycled Art, 90% of recycled materials
- 210. Holiday Craft
- 211. Weaving/Braiding
- 212. Wooden Stick Art
- 213. Jewelry, any medium
- 214. Needlecraft
- 215. Scrapbook Page
- 216. Decorated Ceramics
- 217. Photography - People
- 218. Photography - Animal
- 219. Photography - Other
- 220. Drawing Pencil/Pen
- 221. Any craft other than above

## JUNIOR

**8 years of age thru 13 years old; as of January 1 of this year.**

**Premiums: 1st - \$3.00; 2nd - \$2.00; 3rd - \$1.00**

### Class

- 231. Painting, any medium
- 232. Drawing, any medium - no paint
- 233. Print Making, any medium
- 234. Paper Craft
- 235. Sculpture, any medium - handmade
- 236. Ceramics, fired (hand built / wheel thrown)
- 237. Mask Making, any medium
- 238. Duct Tape Creation, 90% duct tape
- 239. Jewelry, any medium
- 240. Holiday Craft
- 241. Weaving/Braiding
- 242. Needlecraft
- 243. Photography - People
- 244. Photography - Animal
- 245. Photography - Human interest - seascape
- 246. Photography - Human interest - landscape
- 247. Photography - Human interest - nature
- 248. Computer Assisted Graphics (original photo on back)
- 249. Woodworking (no size requirement) - Kit
- 250. Woodworking - (no size requirement) - No Kit
- 251. Scrapbook Page
- 252. Most Unusual Collection (10 pcs. max., 18" x 18" size)
- 253. Recycled Art, 90% of recycled materials
- 254. Drawing Pencil/Pen
- 255. Any craft other than above

## SENIOR

**14 years of age thru 19 years old; as of January 1 of this year.**

**Premiums: 1st - \$3.00; 2nd - \$2.00; 3rd - \$1.00**

### Class

- 260. Painting, any medium
- 261. Drawing, any medium - no paint
- 262. Digital Art, max size 8.5" x 11"
- 263. Paper Craft

## JUNIOR FAIR (continued)

- 264. Sculpture, any medium - handmade
- 265. Ceramics, fired (hand built / wheel thrown)
- 266. Mask Making, any medium
- 267. Photography - People
- 268. Photography - Animal
- 269. Photography - Human interest - seascape
- 270. Photography - Human interest - landscape
- 271. Photography - Nature
- 272. Computer Assisted Graphics (original photo on back)
- 273. Woodworking (no size requirement) - Kit
- 274. Woodworking (no size requirement) - No Kit
- 275. Recycled Art, 90% of recycled materials
- 276. Duct Tape Creation, 90% duct tape
- 277. Holiday Craft
- 278. Jewelry, any medium
- 279. Weaving/Braiding
- 280. Retro Toy Collection - Must be a least 1 decade old (10 pcs. max., 18" x 18" size)
- 281. Scrapbook Page
- 282. Decorated Ceramics
- 283. Drawing Pencil/Pen
- 284. Needlecraft
- 285. Any craft other than above

### SPECIAL NEEDS

No age grouping/limit

**Premiums: 1st - \$3.00; 2nd - \$2.00; 3rd - \$1.00**

#### Class

- 290. Painting/Drawing, any medium
- 291. Sculpture, any medium
- 292. Any craft other than the above
- 293. Any Collection - 10 pcs. max., 18" x 18" size

## OPEN CLASS - CULINARY SECTION 300

**Review rules and requirements at beginning of Junior Fair section. Additional rules as follows:**

1. Open to youth through 19 years of age as of January 1 of this year. No age divisions.
2. All entries to be dropped off Sunday before Fair from 9:30 A.M. - 11:30 A.M.
3. All exhibits MUST be able to withstand summer temperatures.
4. Copy of recipe must be attached (except Class 301 Decorated Cake).
5. One entry per class.
6. Items that need refrigeration will NOT be accepted.
7. Any type of pie pan may be used, but fair management will NOT be responsible for pan. Disposable preferred.
8. Recipes become property of CCAS.

**Best of Culinary - \$7.00 & Rosette**

### VEHICLE STORAGE

November - March  
Call the office for more information.  
(440) 243-0090

## JUNIOR FAIR (continued)

### CAKES/PIE

**Premiums: 1st - \$3.00; 2nd - \$2.00; 3rd - \$1.00**

#### Class

- 300. Cake, Iced (1/4 cake)
- 301. Decorated Cake (cake form acceptable)
- 302. Cupcakes, Iced (6 per plate)
- 303. Pie, Fruit - whole (8" or 9")

### BREADS, QUICK

**Premiums: 1st - \$3.00; 2nd - \$2.00; 3rd - \$1.00**

#### Class

- 304. Loaf, (1/2 of loaf)
- 305. Muffins, (6 per plate)

### BREADS, YEAST

**Premiums: 1st - \$3.00; 2nd - \$2.00; 3rd - \$1.00**

#### Class

- 306. Loaf, (1/2 of loaf)
- 307. Sweet rolls (3 per plate)

### COOKIES

**Premiums: 1st - \$3.00; 2nd - \$2.00; 3rd - \$1.00**

#### Class

- 308. Bar (6 per plate)
- 309. Dropped (6 per plate)
- 310. Rolled (6 per plate)
- 311. Molded, by hand (6 per plate)
- 312. Any other type (6 per plate)
- 313. Chocolate Chip (6 per plate)

The Cuyahoga County Agricultural Society,  
sponsors of the Cuyahoga County Fair, invite you  
to visit our website

**www.cuyfair.com**

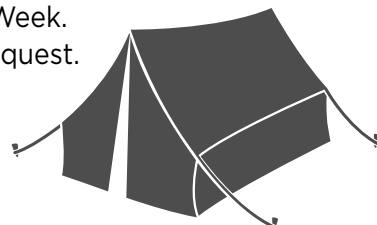
NOTE: Open class entries can be submitted online.  
Animal entries **cannot** be submitted online. Junior Fair entries  
submitted online will be subject to the registration fees.

For information on other activities and  
contests open to youth — such as Classic  
Pony and Horse Show, Home and Hobby,  
Farm Bureau Museum and youth activities —  
see information in other sections of this book.

### YOUTH GROUP CAMPING AVAILABLE DURING FAIR WEEK

Individual scout units are encouraged to participate in  
activities at the fair. Youth groups are welcome to  
camp on-site during Fair Week.  
Sites are available upon request.

Contact Holly Everhart  
ccfjrfair@yahoo.com



## JUNIOR FAIR (continued)

### CANDY

Premiums: 1st - \$3.00; 2nd - \$2.00; 3rd - \$1.00

#### Class

- 314. Fudge (6 pieces per plate)
- 315. Any other type (6 pieces per plate)

### SWEET TREAT

Premiums: 1st - \$3.00; 2nd - \$2.00; 3rd - \$1.00

#### Class

- 316. Candy/NO COOK RECIPE (6 per plate)
- 317. Cookie: NO BAKE RECIPE (6 per plate)

### BROWNIES

Premiums: 1st - \$3.00; 2nd - \$2.00; 3rd - \$1.00

#### Class

- 318. Brownies without nuts (6 per plate)
- 319. Brownies with nuts (6 per plate)

## OPEN CLASS - SEWING & DECORATED GARMENTS SECTION 400

**Review rules and requirements at beginning of Junior Fair section. Additional rules as follows:**

1. Open to all youth through 19 years of age as of January 1 of current year.
2. This category includes both clothing made by the entrant, and purchased garment items which are then tie-dyed, embroidered, appliquéd, or otherwise embellished by the person entering the item.
3. All garments are to be displayed on hangers and can be covered with a clear plastic sleeve.
4. A special Award of Excellence can be given at the discretion of the judges.
5. All needlecraft items not shown as a garment are to be exhibited in Open Class Art and Crafts.
6. Any garment entered in open class MAY NOT be removed from the display for use in any other exhibition.
7. No more than one entry per class by same participant.

**Best of Sewing - \$7.00 & Rosette**

### BEGINNER

Ages through Age 7 as of January 1 of current year

#### Class

Premiums: 1st - \$5.00; 2nd - \$3.00; 3rd - \$2.00

- 401. Any garment
- 402. Any item other than garment
- 403. Decorated garment

### JUNIOR

Ages 8-13 as of January 1 of current year

#### Class

Premiums: 1st - \$5.00; 2nd - \$3.00; 3rd - \$2.00

- 430. Lounge or sleepwear
- 431. Sportswear
- 432. Dress, any length
- 433. Any other garment
- 434. Quilts
- 435. Decorated garment
- 436. Item other than garment

## JUNIOR FAIR (continued)

### SENIOR

Ages 14-19 as of January 1 of current year

#### Class

Premiums: 1st - \$5.00; 2nd - \$3.00; 3rd - \$2.00

- 461. Lounge or sleepwear
- 462. Sportswear
- 463. Dress, any length
- 464. Blazer or jacket
- 465. Decorated garment
- 466. Any other garment
- 467. Item other than garment
- 468. Quilts

## OPEN CLASS SCIENCE - ENGINEERING - CREATIVITY SECTION 500

1. Review rules and requirements at beginning of Junior Fair section. Additional entry rules as follows:
2. No age divisions. Open to youth through 19 years of age as of January 1 of this year. Except where noted. One entry per class.
3. Displays/Models are to be securely mounted on a firm base and limited to a maximum of 15" x 20" of table area unless noted on entry form AND approved in advance by Superintendents of the Junior Fair Department.
4. Collections are groups of items on a particular subject arranged in a specific order and correctly identified. All collections MUST follow the rules below.
5. Should not have been previously entered in the Junior Fair.
6. The collection must be a minimum of 10 specimens and mounted or boxed in a secure manner. NO loose items.
7. Each specimen must be labeled with the name, county, state or country of origin, if applicable.
8. Collections will be judged on the basis of neatness and correctness of information.
9. Collections of bird/animal nests, eggs, feathers, or pelts/skins will NOT be accepted for display or judging.

**Best of Science & Engineering - \$7.00 & Rosette**

### COLLECTIONS (only one entry per class)

#### Class

Premiums: 1st - \$3.00; 2nd - \$2.00; 3rd - \$1.00

- 501. Leaves/plants, labeled
- 502. Rocks/minerals, labeled
- 503. Any other nature collection

### POSTER, ANY MEDIA

Premiums: 1st - \$3.00; 2nd - \$2.00; 3rd - \$1.00

- 504. Poster; Science or Engineering Theme - 11"x17"

**2023**  
**Cuyahoga County Fair**  
**August 8-13, 2023**

## JUNIOR FAIR (continued)

### DISPLAYS/MODELS,

*Three Dimensional (Note Rules & Size above)*

#### Class

**Premiums: 1st - \$3.00; 2nd - \$2.00; 3rd - \$1.00**

- 506. Terrestrial (landscape, architecture)
- 507. Scientific (anatomy, botany, etc.)
- 508. Transportation, any vehicle - no kit
- 509. Lego up to 36" x 36" - no kit
- 510. K-NEX up to 36" x 36" - no kit
- 511. 3-D Printed
- 512. Pinewood Derby Car
- 513. Robotic
- 514. Any Other

## CREATIVE WRITING AND DRAWING CONTESTS

Topic announced at contest time. Materials will be provided. All writing will be done in the Junior Fair Building. Use the Standard Junior Fair Entry Form for these contests. See entry deadlines under General Rules.

**Wednesday of Fair Week - 10:00 A.M. (2 hr. Max)**

**AWARDS:** Ages 8 - 13 years: 1st Place Trophy,  
2nd & 3rd Place Ribbons  
Ages 14 -19 years: 1st Place Trophy,  
2nd & 3rd Place Ribbons

### CREATIVE DRAWING CONTEST

#### Class

- 560. Ages 8 -13 years
- 561. Ages 14 - 19 years

### CREATIVE WRITING CONTEST

#### Class

- 590. Ages 8 -13 years old
- 591. Ages 14 -19 years old

## PROJECT RUNWAY CLASS 610

**Tuesday, August 9th, 2022  
6:00 P.M. - 8:00 P.M.**

- All participants must pre-register
- Teams to consist of minimum of 3 people in similar age group
- All materials will be supplied
- No sewing required
- All teams must produce a wearable garment and garment will need to be modeled by a team member
- Register by filling out the Junior Entry form located in the back of the book.
- Please contact us at [ccfjrfair@yahoo.com](mailto:ccfjrfair@yahoo.com) if you have any items to donate for the contest.
- All participants MUST check in at the Junior Fair desk by

## JUNIOR FAIR (continued)

5:30 in order to be placed on a team.

### Class

- 610. Ages 10-14
- 611. Ages 15-19

## JUNIOR FAIR BAKE-OFF and AUCTION SECTION 700

### Friday of Fair Week

*Entry Forms must be submitted*

*See entry deadline under General Rules*

*No repeat winning recipes*

Review Rules and Requirements at the beginning of Jr. Fair section. Pre entered bake-off products will be accepted Friday until 6:00 P.M. in the Junior Fair Building. Look up your favorite dessert recipe! Prepare the specialty that has already won the praises of your family and the envy of your friends!

YOUTH ENTRANTS can win a ribbon and a cash prize & other awards.

**1st Place \$20.00 • 2nd Place \$15.00 • 3rd Place \$10.00**

### CONTEST RULES

1. Use the regular Junior Fair Entry form in this book. See entry deadline under General Rules.
2. Entrants can be a participant/exhibitor in the Junior Fair Department of the Cuyahoga County Fair, or any adult interested in supporting the Junior Fair. Adult entrants are not eligible for premiums or ribbons.
3. Cookies, muffins, rolls, cupcakes must be "Baker's Dozen."
4. Two copies of the recipe **MUST** accompany the product on Friday of the Fair.
5. Entries requiring refrigeration cannot be accepted.
6. Please use disposable plates or pans.
7. All entries become the property of the Junior Fair and **WILL** be auctioned at the Junior Fair Bake-Off Auction immediately following judging. Approximately 7:00 P.M.
8. Junior Fair Officials have the right to disqualify any entry that appears to be commercially produced.
9. All contestants are encouraged to help display their entries  
at the Junior Fair Bake-Off Auction.

### JUNIORS

#### Class

- 701. Ages 8 - 13 as of January 1 of current year

### SENIORS

#### Class

- 702. Age 14 - 19 as of January 1 of current year

### FRIENDS OF JUNIOR FAIR DIVISION

#### Class

- 703. Ages 20 & up as of January 1 of current year



# ELITE DONORS



## Charles F. "Nick" Willis

Charles F. "Nick" Willis donated \$25,000 for installation of a Solar Array on the roof of the Old Barn Pavillion to generate electricity for an EV Charging Station, adding to the Wind Turbine's Renewable Energy message to Cuyahoga County Fairgrounds' 900,000 visitors per year. Thank You Nick for your Outstanding Contribution to Our Fair!



## The Berea City Club

The Berea City Club has made contributions supporting the refurbishing of the Cuyahoga County Fairgrounds Victory Arch at Gate 1, the electronic marquee on Bagley Road and the future re-design and installation of the Bagley Road Gate to the Cuyahoga County Fairgrounds. Thank You Berea City Club for your Continued Support of Our Fair!

*Wonderful Winter Shops*  
**at CCF Grounds -  
December 10-11, 2022**

**HORSE PULL**  
**WEDNESDAY, AUGUST 11, 2022**  
**IN FRONT OF THE GRANDSTAND**

## INDOOR FLEA MARKET

November 5-6, 2022  
December 3-4, 2022  
January 7-8, 2023  
February 4-5, 2023  
March 4-5, 2023

For information on other Departments at the Fair with activities and contests open to youth participation (such as Classic Pony and Horse Show, Home and Hobby, Youth Garden Displays) see information in other sections of this book related to those Departments.

**JUNIOR FAIR**



## DAILY ENTERTAINMENT AND ATTRACTIONS

2022 schedule to be announced

See the website:  
[www.cuyfair.com](http://www.cuyfair.com)



### It's Electric!

**Experience the power of the wind through  
our 262 foot tall, 500 kW wind turbine.**

Our 2,000 sq. ft. Sustainability Center is full of energy efficient elements such as lighting, sensors, solar tubes and solar attic fans, not to mention numerous construction materials such as high R value insulation, insulated concrete slab floors and a state of the art heating and cooling system. We also offer a small classroom that can be reserved for organizational, educational and community meetings. Our classroom seats 40 people theater style or 25 at tables and is wireless as is the entire building.

### Visit Today

A Wind Energy Curriculum and assisted instruction is available on site. Design and build a renewable energy device to take home as a part of a visit.

Please note the instructional lessons, make and take renewable energy projects and tours **MUST** be scheduled ahead of time. A fee may be charged to cover the cost of the project materials.

School and educational tours may be divided into three sections and rotated through the Sustainability Center, Solar Fountain and a Turbine Walk depending on the number of participants. Students must be accompanied by certified teachers and/or adult chaperones.

**Tours must be scheduled and available dates fill  
up quickly. Please call the Fairboard Office,  
440-243-0090 x100  
for details and to schedule your tour.**

## CUYAHOGA COUNTY FARM BUREAU

8460 Ridge Road  
North Royalton OH 44133  
440-877-0706



OHIO FARM BUREAU  
Forging a partnership between  
farmers & consumers.

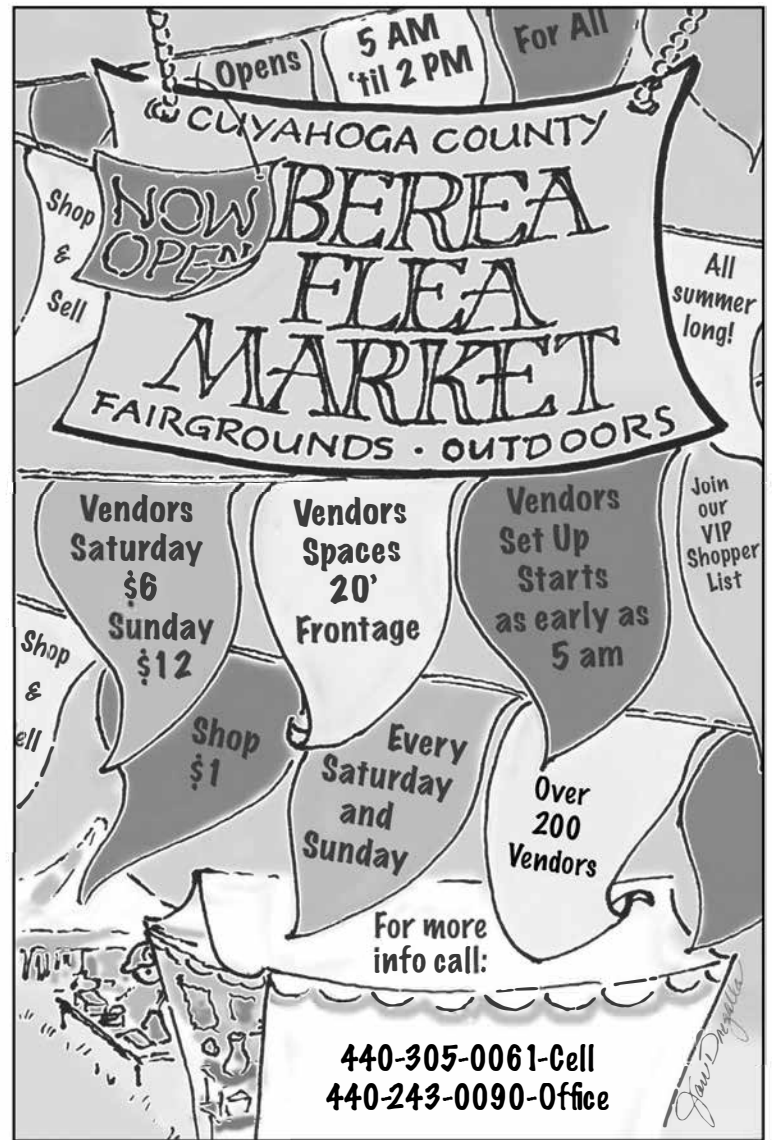
The Farm Bureau supports Ohio's farmers and promotes Ohio agriculture.

Our vision is to forge a partnership between farmers and consumers that meets consumer needs and ensures agricultural prosperity in a global marketplace.

The Farm Bureau encourages dialogue about food, promotes youth and leadership development, advocates for care of animals, and fosters attention to the environment through our Communications, Organization and Public Policy committees.

You don't have to be a farmer to be a Farm Bureau member - Join Our Growing Community

Get involved in an organization where members work to improve life for themselves and their communities. Go to <growwithfb.org> to learn more about Farm Bureau.



## Cuyahoga County Agricultural Society

Membership is open to any resident of Cuyahoga County, twenty-one years of age or older.

Cost is \$25.00

Includes four general admission tickets to the fair, reduced fees for special programs and the ability to vote in the annual election the first of October.

(To become a candidate for Director-At-Large you must have a valid membership and fill out the application)

Identification/proof of age and address is necessary when purchasing a membership.

Sale of memberships stop at the close of the last day of the Fair. No exceptions.

### THE CUYAHOGA COUNTY AGRICULTURAL SOCIETY

**A 501c3 not-for-profit organization**

#### ESTATE PLANNING IN YOUR WILL

A wise and wonderful way to  
help carry out our mission

**TO EXHIBIT, TO EDUCATE, AND  
TO DEMONSTRATE AGRIBUSINESS  
PRODUCTS AND TECHNIQUES FROM  
THE PAST, PRESENT AND FUTURE  
IN A FESTIVE ATMOSPHERE  
FOR ALL GENERATIONS**



## 2022 125th Anniversary CCF Cookbook

### Advanced Order Sales

Form must be postmarked or dropped off  
by July 29th, 2022

**Advanced Sale Price \$10.00**

Mail to: P.O. Box 135 Berea OH 44017  
or drop off at the fair office during open hours

Cookbooks will be available for pickup week of  
fair August 9th-14th 2022

Name: \_\_\_\_\_  
Address: \_\_\_\_\_  
Phone #: \_\_\_\_\_  
How Many Books: \_\_\_\_\_  
Total: \$ \_\_\_\_\_

Check One:

☐ Cash ☐ Check

Please make check's out to  
Cuyahoga County Agricultural  
Society



## OFFICE USE

**Fair Dates:**  
Aug. 9-14, 2022

**Entries Close:**  
July 29, 2022

**NO EXCEPTIONS  
FOR LATE ENTRIES!**

**The Cuyahoga County Fair**  
**P.O. Box 135**  
**Berea, Ohio 44017**  
**Telephone: (440) 243-0090**  
**Fax: (440) 243-0344**  
**Exhibitors Entry Form**

**For**

Exhibitor No.: \_\_\_\_\_  
Receipt No.: \_\_\_\_\_  
Processed By: \_\_\_\_\_  
Entered By: \_\_\_\_\_

# **ARTS and CRAFTS, CANINE, FLORAL\*, GARDEN PRODUCE\***

Cell Phone ( ) -

Name \_\_\_\_\_ Phone ( ) -

Address \_\_\_\_\_ E-Mail \_\_\_\_\_

City \_\_\_\_\_ State \_\_\_\_\_ Zip \_\_\_\_\_

Ln No.	Dept No.	Sec No.	Class No.	No. of Entries	Description of Entry as written in Premium Book	*Show 1st 2nd	
1							
2							
3							
4							
5							
6							
7							
8							
9							
10							

**Enter On-Line at [www.cuyfair.com](http://www.cuyfair.com)**

Check One	Fee
Exhibitor Early Entry Fee 2 Admissions - By July 15	\$10.00
Exhibitor Entry Fee 2 Admissions - By July 29	\$12.00
Exhibitor Early Entry Fee 7 Admissions - By July 29	\$35.00
Please indicate the Total Number of Entries _____	

Note: Please Refer to the Premium Book for Exhibitor Entry Requirements.

Make checks Payable to: **Cuyahoga County Fair**

Use Reverse Side of this Form for Additional Entries.

**Unclaimed items will be donated to charity**

**7 days after the close of the Fair.**

**CREDIT CARD: VISA ☐ MC ☐ DISCOVER ☐**

**Card Number:** \_\_\_\_\_

**Expiration Date:** \_\_\_\_\_ **Zip Code:** \_\_\_\_\_

**Name on Card:** \_\_\_\_\_

"The Cuyahoga County Fairboard and Cuyahoga County Agricultural Society assume no responsibility for livestock and/or articles exhibited, entered and/or shown upon the Cuyahoga County Fairgrounds. Exhibitor/Entrant specifically acknowledges his/her or its awareness that livestock and exhibition articles are placed upon and maintained upon the Cuyahoga County Fairgrounds by them at their sole risk. Further, entrant/exhibitor agrees to hold the Cuyahoga County Agricultural Society and the Cuyahoga County Fairboard harmless from any and all claims to or resulting from their respective livestock and/or exhibits from any cause whatsoever. The aforesaid indemnification shall include injuries to the person or property of third parties resulting from the aforesaid livestock and/or exhibition articles. The Cuyahoga County Fairboard assumes no responsibility for errors or omissions in the foregoing booklet."

EXHIBITOR (PRINT) \_\_\_\_\_ FOR/BY \_\_\_\_\_ EXHIBITOR/ENTRANT \_\_\_\_\_ DATE \_\_\_\_\_

Must be signed By Parent/Guardian if Under 18

***This Form May Be Duplicated as Needed!***

Ln No.	Dept No.	Sec No.	Class No.	No. of Entries	Description of Entry <i>as written in Premium Book</i>	Show	
						1st	2nd
11							
12							
13							
14							
15							
16							
17							
18							
19							
20							
21							
22							
23							
24							
25							
26							
27							
28							
29							
30							
31							
32							
33							
34							

**Note: Complete if Separate Page.**

Name \_\_\_\_\_ Phone \_\_\_\_\_ Cell \_\_\_\_\_

Address \_\_\_\_\_ City \_\_\_\_\_ State \_\_\_\_\_ Zip \_\_\_\_\_

E-mail \_\_\_\_\_

***This Form May Be Duplicated As Needed!***

# The Cuyahoga County Fair

P.O. Box 135

Berea, Ohio 44017

Telephone: (440)

243-0090

Fax: (440) 243-0344

**Exhibitors Entry Form**

**For**

**Junior Fair**

## OFFICE USE

Exhibitor No.: \_\_\_\_\_

Receipt No.: \_\_\_\_\_

Processed By: \_\_\_\_\_

Entered By: \_\_\_\_\_

**Fair Dates:**

Aug. 9-14, 2022

**Entries Close:**

July 29, 2022

**NO EXCEPTIONS  
FOR LATE ENTRIES!**

Please accept the entries below subject to the rules and requirements of the Cuyahoga County Agricultural Society. I agree to be governed by the rules and requirements as published in the Official Premium List. Enter as many Open Classes as you wish. However, you may only enter one exhibit per class.  
Entries to the Secretary, Cuyahoga County Fair, P.O. Box 135, Berea, Ohio 44017, or bring your entry form to the Fair office.

Name \_\_\_\_\_ Age \_\_\_\_\_ E-Mail \_\_\_\_\_

Address \_\_\_\_\_ Phone \_\_\_\_\_ Cell \_\_\_\_\_

City \_\_\_\_\_ State \_\_\_\_\_ Zip \_\_\_\_\_

Youth Organization to which you belong (if any) \_\_\_\_\_

Adult Leader \_\_\_\_\_ Phone \_\_\_\_\_

Ln. No.	Section	Class	Describe Article as Premium List Reads
1			
2			
3			
4			
5			
6			
7			
8			
9			
10			

Signature of Parent or Guardian \_\_\_\_\_

"The Cuyahoga County Fairboard and Cuyahoga County Agricultural Society assume no responsibility for livestock and/or articles exhibited, entered and/or shown upon the Cuyahoga County Fairgrounds. Exhibitor/Entrant specifically acknowledges his/her or its awareness that livestock and exhibition articles are placed upon and maintained upon the Cuyahoga County Fairgrounds by them at their sole risk. Further, entrant/exhibitor agrees to hold the Cuyahoga County Agricultural Society and the Cuyahoga County Fairboard harmless from any and all claims to or resulting from their respective livestock and/or exhibits from any cause whatsoever. The aforesaid indemnification shall include injuries to the person or property of third parties resulting from the aforesaid livestock and/or exhibition articles. The Cuyahoga County Fairboard assumes no responsibility for errors or omissions in the foregoing booklet."

EXHIBITOR (PRINT) \_\_\_\_\_ FOR/BY \_\_\_\_\_ EXHIBITOR/ENTRANT \_\_\_\_\_ DATE \_\_\_\_\_

**Must be signed By Parent/Guardian if Under 18**

**Unclaimed items will be donated to charity 7 days after the close of the Fair.**

<b>Ln. No.</b>	<b>Section</b>	<b>Class</b>	<b>Describe Article as Premium List Reads</b>
11			
12			
13			
14			
15			
16			
17			
18			
19			
20			
21			
22			
23			
24			
25			
26			
27			
28			
29			
30			
31			
32			
33			
34			
35			

Signature of Parent or Guardian \_\_\_\_\_

# Notes

[illegible]